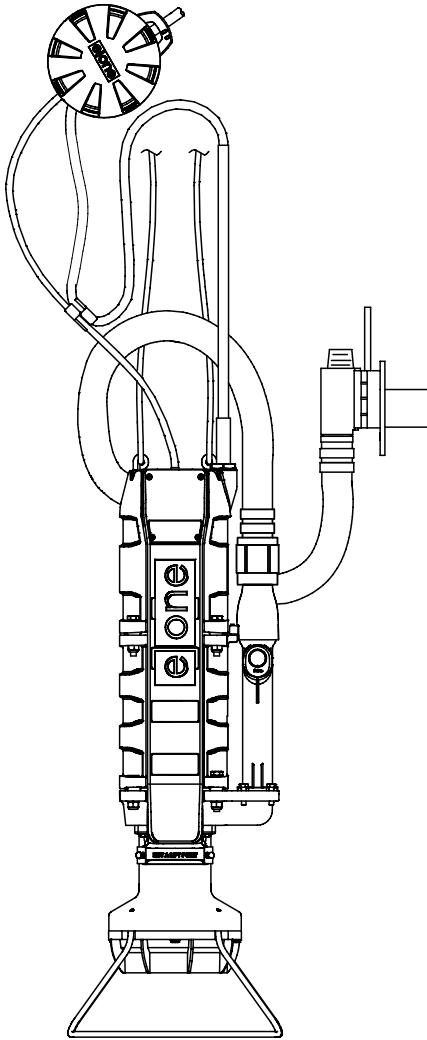


WX

Explosionproof Grinder Pump



General Features

The E/One model WX explosionproof grinder pump is engineered to meet the stringent Factory Mutual™ explosionproof equipment standards for use in locations classified as Class I, Division 1, Group D (approval standard 3615).

The WX pump comes complete with a self-contained level control system, eliminating troublesome float switches. The pump uses the same level control system as E/One's "WR" pump, the "wireless" pump model that uses radio frequency identification (RFID) technology to communicate between the level controls and the motor controls.

The grinder pump is activated automatically and runs infrequently for very short periods. The internal check valve assembly, located in the grinder pump, is custom-designed for non-clog, trouble-free operation.

- Designed not to jam and for minimum wear to the grinding mechanism
- Universal design allows for easy installation into open wetwell tanks
- Available with a range of discharge hose lengths to accommodate a wide range of tank depths

Operational Information

Motor

1 hp, 1,725 rpm, high torque, capacitor start, thermally protected, 240V, 60 Hz, 1 phase

Discharge Connections

Pump discharge terminates in 1.25-inch female solvent weld fitting; threaded adapter is supplied and discharge can easily be adapted to 1.25-inch NPT.

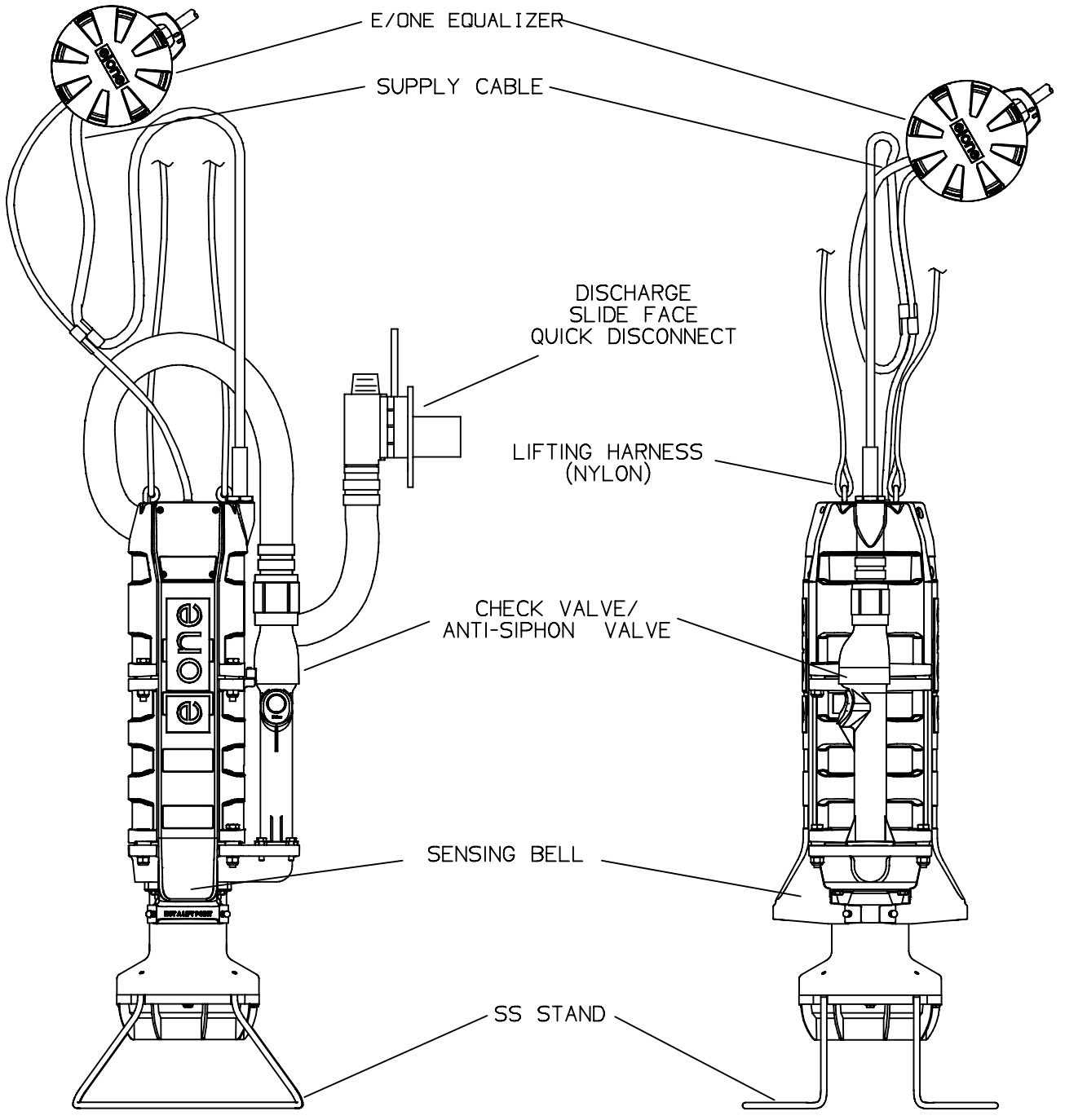
Discharge

15 gpm at 0 psig (0.95 lps at 0 m)

11 gpm at 40 psig (0.69 lps at 28 m)

7.8 gpm at 80 psig (0.49 lps at 56 m)

US & foreign patents issued and pending




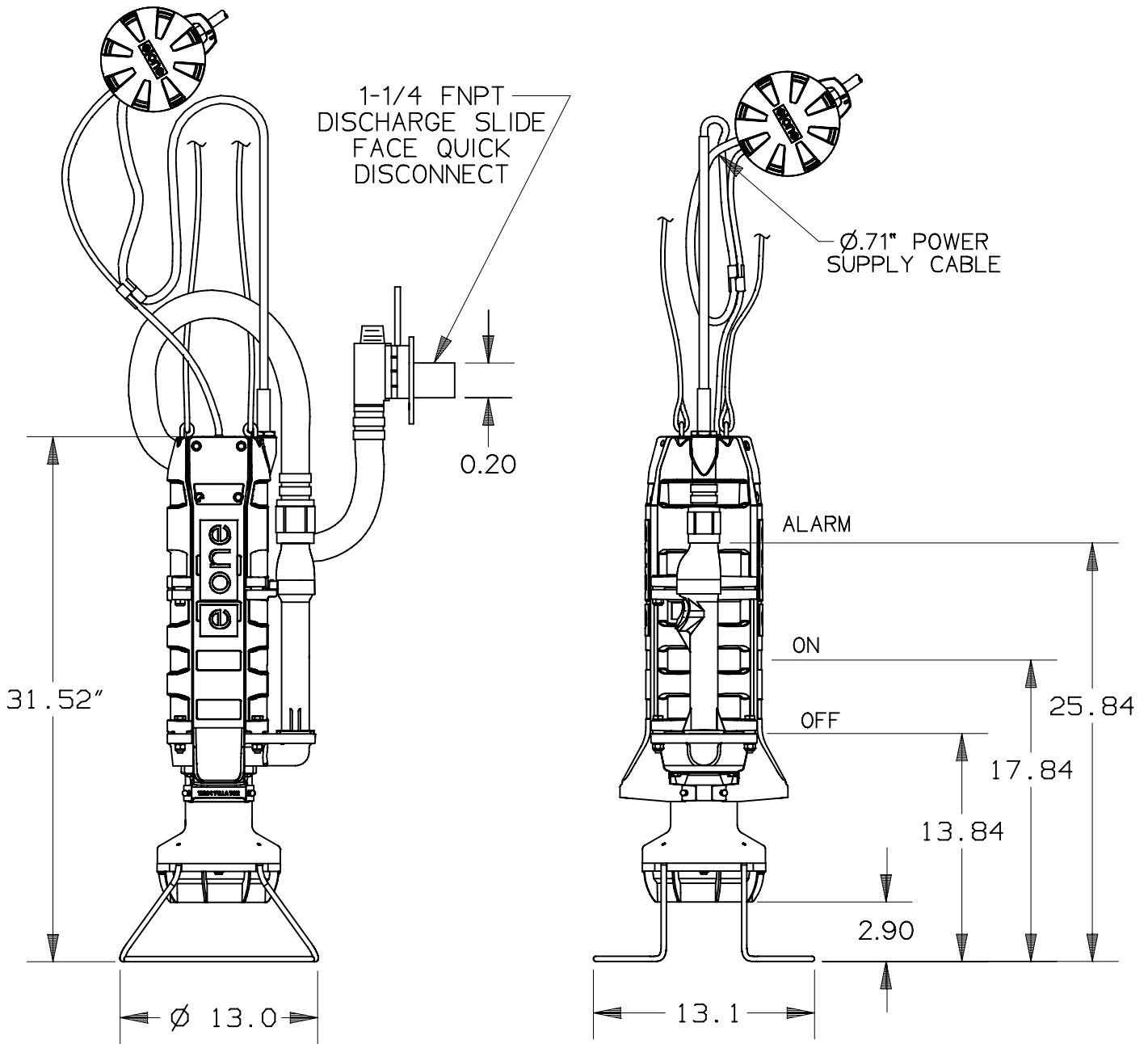
EXPLOSION PROOF GRINDER PUMP

NOTE:

THE PUMP ASSEMBLIES ARE LISTED BY ETL TO FACTORY MUTUAL (FM) STANDARDS FOR CLASS 1, DIVISION 1, GROUP D, THE LEVEL CONTROL SYSTEM, INTEGRAL TO THE PUMP, IS INTRINSICALLY SAFE

ALSO AVAILABLE APPROVED BY CSA FOR CLASS 1, DIVISION 1, GROUP D

AD	DB	12/09/10	A	
DR BY	CHK'D	DATE	ISSUE	SCALE
 SEWER SYSTEMS				
EXPLOSION PROOF GRINDER PUMPS				
LM000373				



EXPLOSION PROOF GRINDER PUMP

NOTE:

THE PUMP ASSEMBLIES ARE LISTED BY ETL TO FACTORY MUTUAL (FM) STANDARDS FOR CLASS 1, DIVISION 1, GROUP D, THE LEVEL CONTROL SYSTEM, INTEGRAL TO THE PUMP, IN INTRINSICALLY SAFE

ALSO AVAILABLE APPROVED BY CSA FOR CLASS 1, DIVISION 1, GROUP D

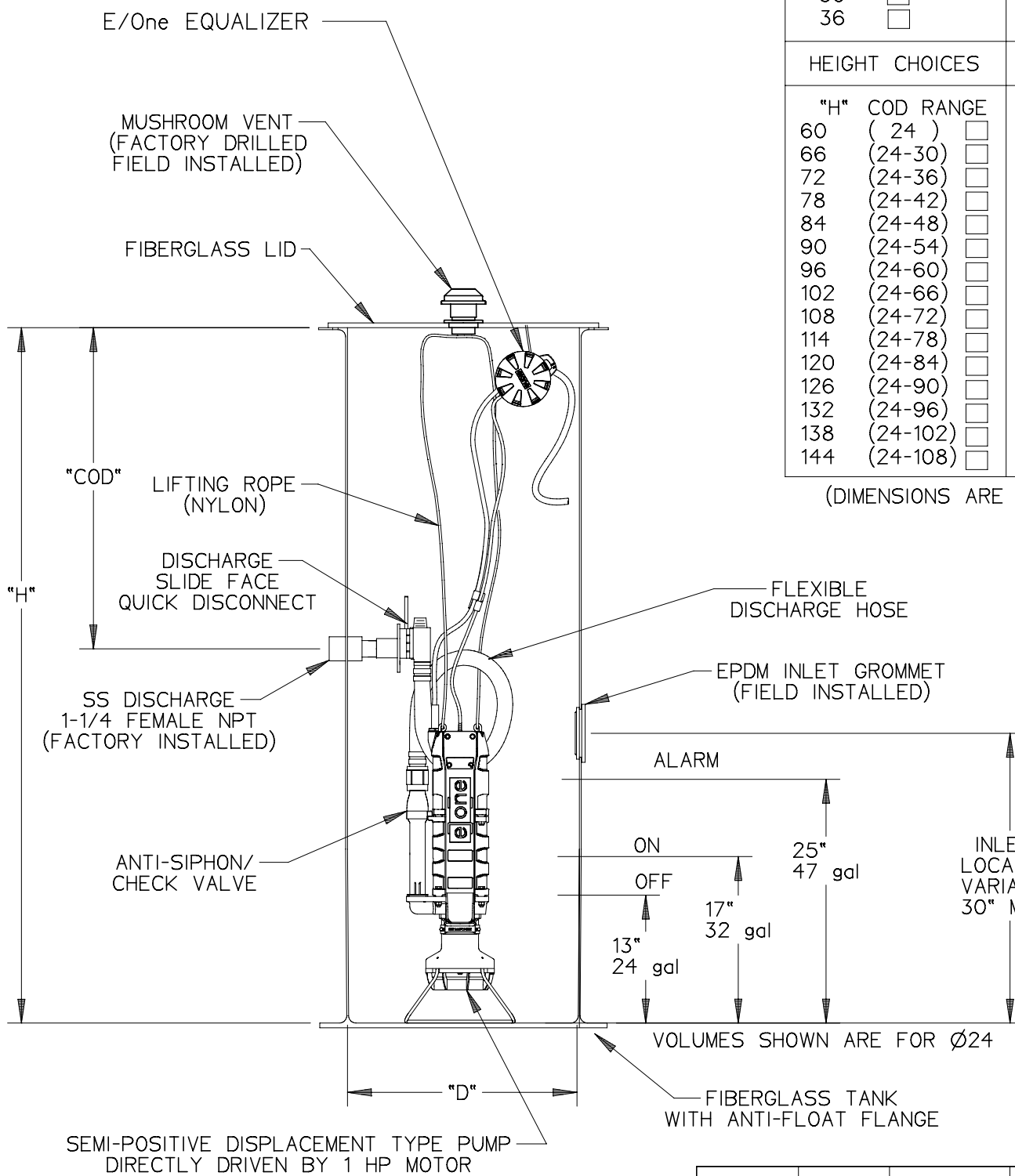
AD	DB	12/09/10	A	
DR BY	CHK'D	DATE	ISSUE	SCALE



DIMENSION SHEET, EXPLOSION PROOF

LM000374

WX SERIES, EXPLOSION PROOF PUMP IN A W SERIES SIMPLEX BASIN



DIAMETER CHOICES		W SERIES SIMPLEX STATIONS	
"D"			
24	<input type="checkbox"/>		
30	<input type="checkbox"/>		
36	<input type="checkbox"/>		
HEIGHT CHOICES		COVER OVER DISCH CHOICES	
"H"	COD RANGE	"COD"	
60	(24) <input type="checkbox"/>	24	<input type="checkbox"/>
66	(24-30) <input type="checkbox"/>	30	<input type="checkbox"/>
72	(24-36) <input type="checkbox"/>	36	<input type="checkbox"/>
78	(24-42) <input type="checkbox"/>	42	<input type="checkbox"/>
84	(24-48) <input type="checkbox"/>	48	<input type="checkbox"/>
90	(24-54) <input type="checkbox"/>	54	<input type="checkbox"/>
96	(24-60) <input type="checkbox"/>	60	<input type="checkbox"/>
102	(24-66) <input type="checkbox"/>	66	<input type="checkbox"/>
108	(24-72) <input type="checkbox"/>	72	<input type="checkbox"/>
114	(24-78) <input type="checkbox"/>	78	<input type="checkbox"/>
120	(24-84) <input type="checkbox"/>	84	<input type="checkbox"/>
126	(24-90) <input type="checkbox"/>	90	<input type="checkbox"/>
132	(24-96) <input type="checkbox"/>	96	<input type="checkbox"/>
138	(24-102) <input type="checkbox"/>	102	<input type="checkbox"/>
144	(24-108) <input type="checkbox"/>	108	<input type="checkbox"/>

(DIMENSIONS ARE IN INCHES)

INLET CHOICES	
4" DWV PIPE (4.50 OD)	<input type="checkbox"/>
4" DR35 PIPE (4.22 OD)	<input type="checkbox"/>
6" DWV PIPE (6.63 OD)	<input type="checkbox"/>
6" DR35 PIPE (6.28 OD)	<input type="checkbox"/>

NOTE:
 THE PUMP ASSEMBLY IS LISTED BY ETL TO FACTORY MUTUAL (FM) STANDARDS FOR CLASS I, DIVISION I, GROUP D, THE LEVEL CONTROL SYSTEM, INTEGRAL TO THE PUMP, IS INTRINSICALLY SAFE

SGS		03-31-08	-	1/16
DR BY	CHK'D	DATE	ISSUE	SCALE

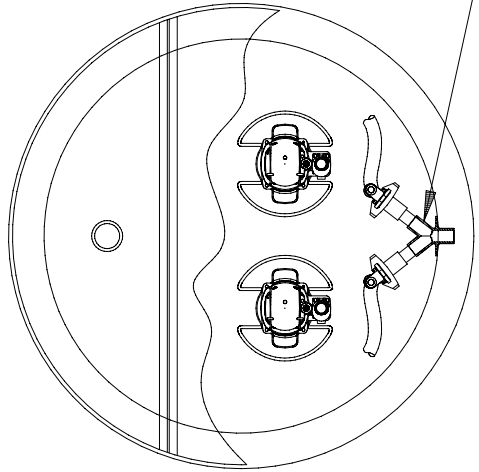


WX SERIES PUMP IN A SIMPLEX W SERIES STATION

NA0133P01

WX SERIES EXPLOSION PROOF PUMP IN A W SERIES DUPLEX BASIN

SS DISCHARGE MANIFOLD
(FACTORY INSTALLED)



ALUMINUM 1/3 - 2/3 SPLIT
LOCKABLE LID

MUSHROOM VENT
(FACTORY DRILLED
FIELD INSTALLED)

E/ONE EQUALIZER

LIFTING ROPE
(NYLON)

DISCHARGE SLIDE FACE
QUICK DISCONNECT "COD"

SS DISCHARGE HUB
1 1/4" FEMALE NPT
(FACTORY INSTALLED)

"H"

EPDM INLET
GROMMET
(FIELD INSTALLED)

ANTI-SIPHON
CHACK VALVE

INLET
LOCATION
VARIABLE
30" MIN

FLEXIBLE
DISCHARGE HOSE

ALARM
ON
OFF

25" 196 gal
17" 133 gal
13" 102 gal

FIBERGLASS TANK
WITH ANTI-FLOAT FLANGE

"D"

VOLUMES SHOWN ARE FOR Ø48"

SEMI-POSITIVE DISPLACEMENT TYPE PUMP
DIRECTLY DRIVEN BY 1 HP MOTOR

INLET CHOICES

- 4" DWV PIPE (4.50 OD)
- 4" DR35 PIPE (4.22 OD)
- 6" DWV PIPE (6.63 OD)
- 6" DR35 PIPE (6.28 OD)

NOTE:

THE PUMP ASSEMBLY IS LISTED BY ETL TO FACTORY MUTUAL (FM) STANDARDS FOR CLASS I, DIVISION I, GROUP D, THE LEVEL CONTROL SYSTEM, INTEGRAL TO THE PUMP, IS INTRINSICALLY SAFE

DIAMETER CHOICES

- "D"
36
- 42
- 48
- 60

W SERIES
DUPLEX
STATIONS

HEIGHT CHOICES

- | "H" | COD RANGE | |
|-----|-----------|--------------------------|
| 60 | (24) | <input type="checkbox"/> |
| 66 | (24-30) | <input type="checkbox"/> |
| 72 | (24-36) | <input type="checkbox"/> |
| 78 | (24-42) | <input type="checkbox"/> |
| 84 | (24-48) | <input type="checkbox"/> |
| 90 | (24-54) | <input type="checkbox"/> |
| 96 | (24-60) | <input type="checkbox"/> |
| 102 | (24-66) | <input type="checkbox"/> |
| 108 | (24-72) | <input type="checkbox"/> |
| 114 | (24-78) | <input type="checkbox"/> |
| 120 | (24-84) | <input type="checkbox"/> |
| 126 | (24-90) | <input type="checkbox"/> |
| 132 | (24-96) | <input type="checkbox"/> |
| 138 | (24-102) | <input type="checkbox"/> |
| 144 | (24-108) | <input type="checkbox"/> |

COVER OVER
DISCH CHOICES

- | "COD" | |
|-------|--------------------------|
| 24 | <input type="checkbox"/> |
| 30 | <input type="checkbox"/> |
| 36 | <input type="checkbox"/> |
| 42 | <input type="checkbox"/> |
| 48 | <input type="checkbox"/> |
| 54 | <input type="checkbox"/> |
| 60 | <input type="checkbox"/> |
| 66 | <input type="checkbox"/> |
| 72 | <input type="checkbox"/> |
| 78 | <input type="checkbox"/> |
| 84 | <input type="checkbox"/> |
| 90 | <input type="checkbox"/> |
| 96 | <input type="checkbox"/> |
| 102 | <input type="checkbox"/> |
| 108 | <input type="checkbox"/> |

(DIMENSIONS ARE IN INCHES)

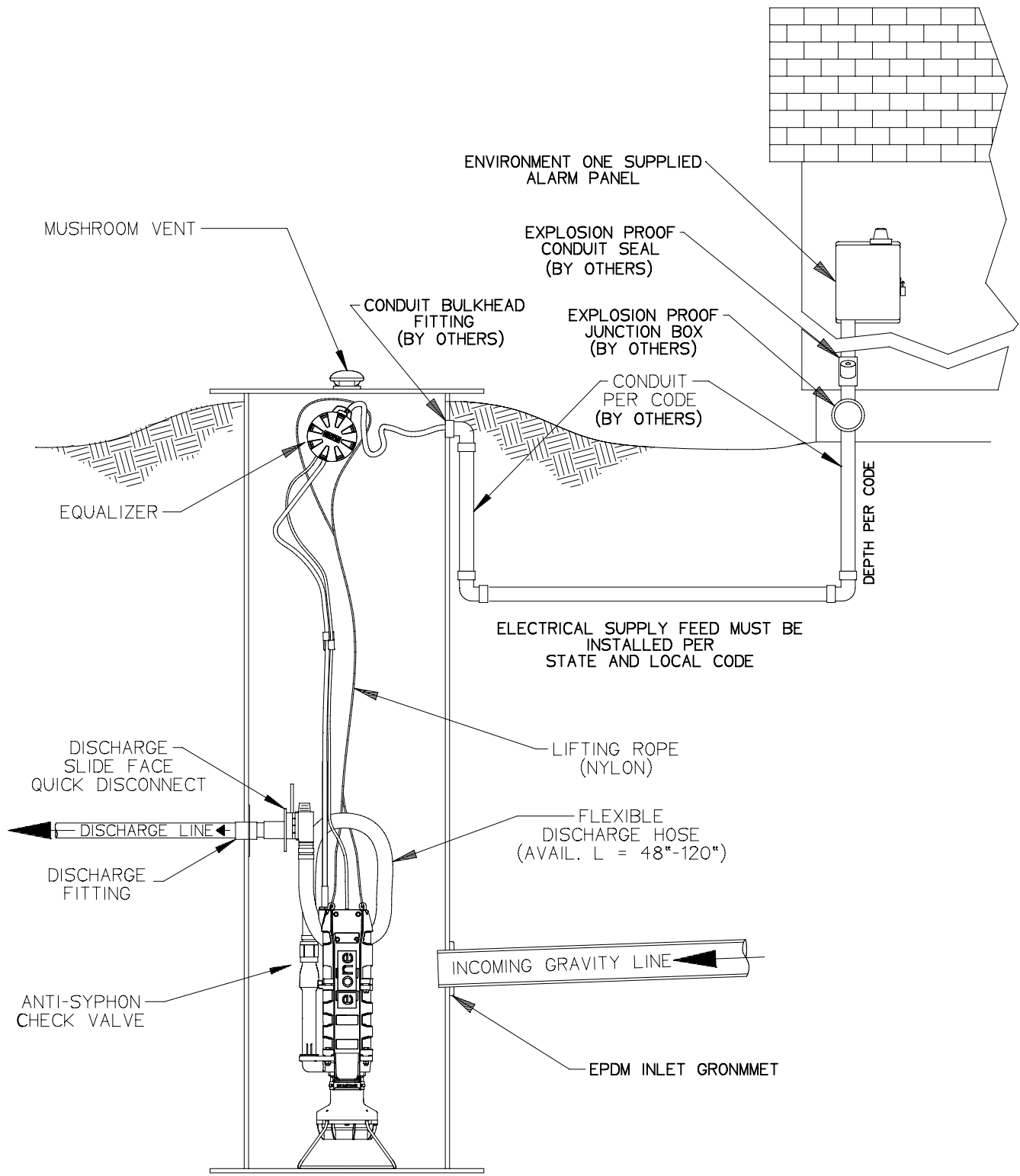
SGS		03-31-08	-	1/32
DR BY	CHK'D	DATE	ISSUE	SCALE



SEWER SYSTEMS

WX SERIES PUMP IN A DUPLEX
W SERIES STATION

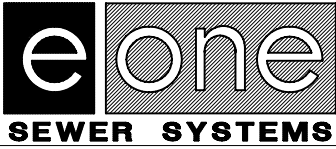
NA0134P01



NOTE:

THE PUMP ASSEMBLY IS LISTED BY ETL TO FACTORY MUTUAL (FM) STANDARDS FOR CLASS I, DIVISION I, GROUP D, THE LEVEL CONTROL SYSTEM, INTEGRAL TO THE PUMP, IS INTRINSICALLY SAFE

SGS	CAH	03/31/08	-	1/16
DR BY	CHK'D	DATE	ISSUE	SCALE



WX SERIES, TYPICAL INSTALLATION

NA0132P01