

DX502

(DR502 with Explosionproof Grinder Pumps)

Description

The E/One model DX explosionproof grinder pump is engineered to meet the stringent Factory Mutual™ explosionproof equipment standards for use in locations classified as Class I, Division 1, Group D (approval standard 3611). The DX502 is a 500-gallon capacity grinder pump station that contains two explosionproof grinder pumps. Note: Only the pumps are listed by FM for explosionproof equipment.

General Features

The DX502 comes complete with a self-contained level control system, eliminating troublesome float switches. The pumps use the same level control system as the model DR502, the “wireless” pump model that uses radio frequency identification (RFID) technology to communicate between the level controls and the motor controls. The grinder pumps are automatically activated and run infrequently for very short periods.

The internal check valve assemblies, located in the grinder pumps, are custom-designed for non-clog, trouble-free operation.

- 500 gallons (1893 liters) of capacity; HDPE tank and lid
- Rated for flows of 6000 gpd (22,714 lpd)
- Available in heights of 129 inches and 160 inches; height adjustment can be performed in the field

E/One requires that the Uni-Lateral, E/One’s own stainless steel check valve, be installed between the grinder pump station and the street main for added protection against backflow.

Operational Information

Motors

1 hp, 1,725 rpm, high torque, capacitor start, thermally protected, 240V, 60 Hz, 1 phase

Inlet Connections

4-inch inlet grommet standard for DWV pipe. Other inlet configurations available from the factory.

Discharge Connections

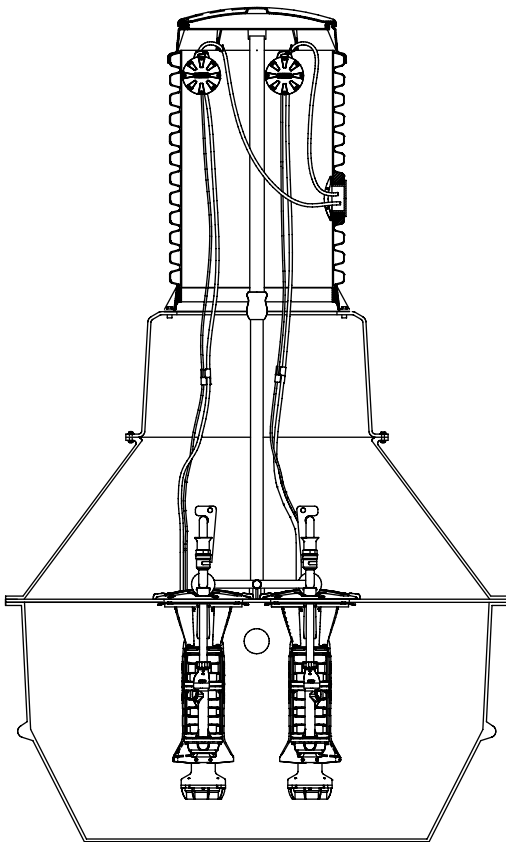
Pump discharge terminates in 1.25-inch female solvent weld fitting; threaded adapter is supplied and discharge can easily be adapted to 1.25-inch NPT.

Discharge (per pump)

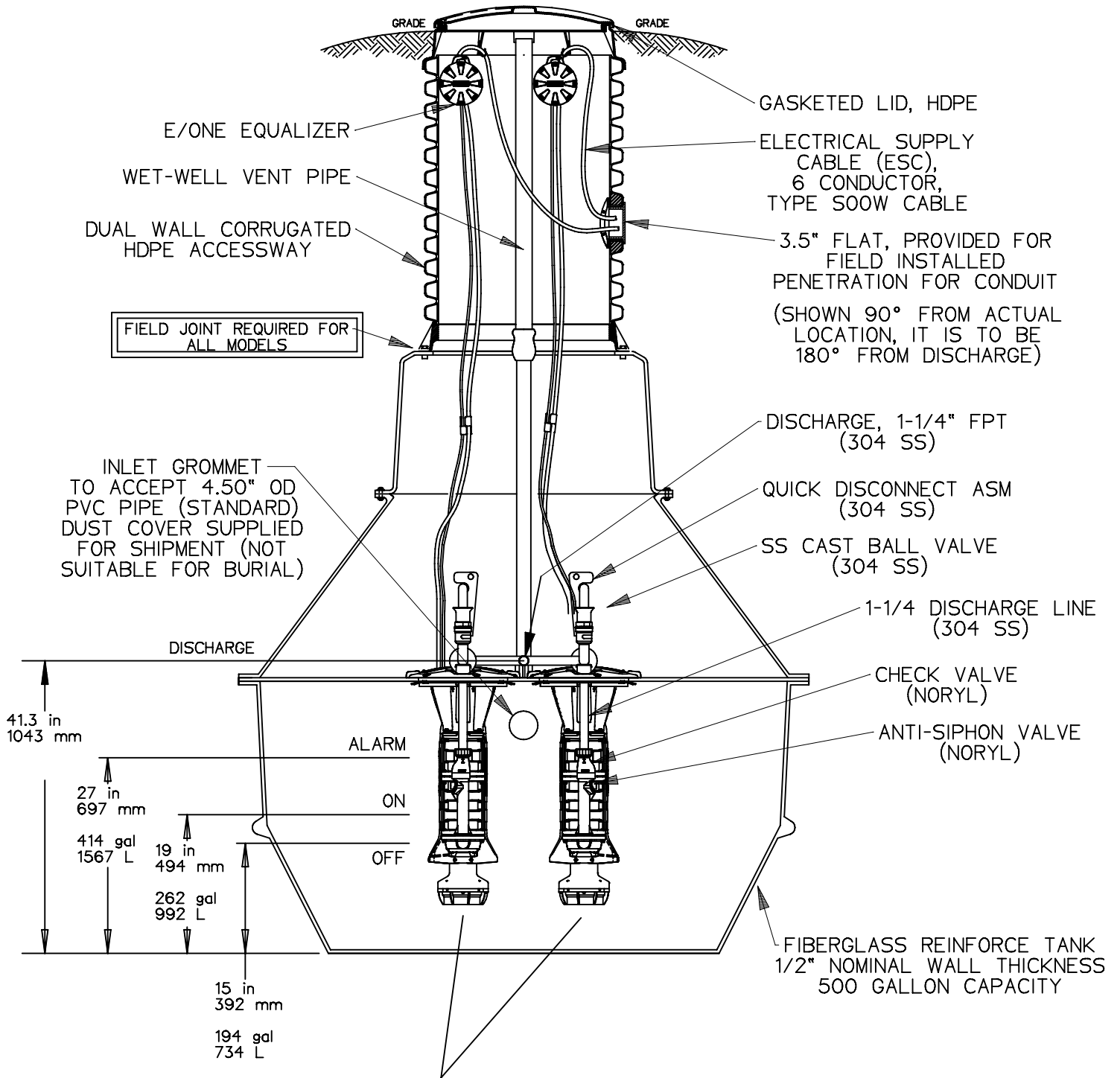
15 gpm at 0 psig (0.95 lps at 0 m)

11 gpm at 40 psig (0.69 lps at 28 m)

7.8 gpm at 80 psig (0.49 lps at 56 m)



DX502



FIELD JOINT REQUIRED FOR ALL MODELS

INLET GROMMET TO ACCEPT 4.50" OD PVC PIPE (STANDARD) DUST COVER SUPPLIED FOR SHIPMENT (NOT SUITABLE FOR BURIAL)

41.3 in
1043 mm

27 in
697 mm

414 gal
1567 L

19 in
494 mm

262 gal
992 L

15 in
392 mm

194 gal
734 L

SEMI-POSITIVE DISPLACEMENT TYPE PUMP EACH DIRECTLY DRIVEN BY 1 HP MOTOR CLASS I, DIV 1, GROUP D

NOTE:

THE PUMP ASSEMBLIES ARE LISTED BY ETL TO FACTORY MUTUAL (FM) STANDARDS FOR CLASS I, DIVISION I, GROUP D, THE LEVEL CONTROL SYSTEM, INTEGRAL TO THE PUMP, IS INTRINSICALLY SAFE (THE STATION IS NOT PART OF THE LISTING)
-ALSO AVAILABLE APPROVED BY CSA FOR CLASS 1, DIVISION 1, GROUP D

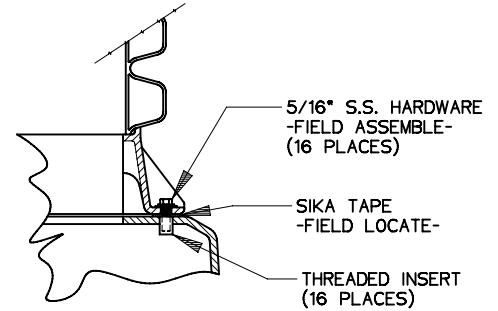
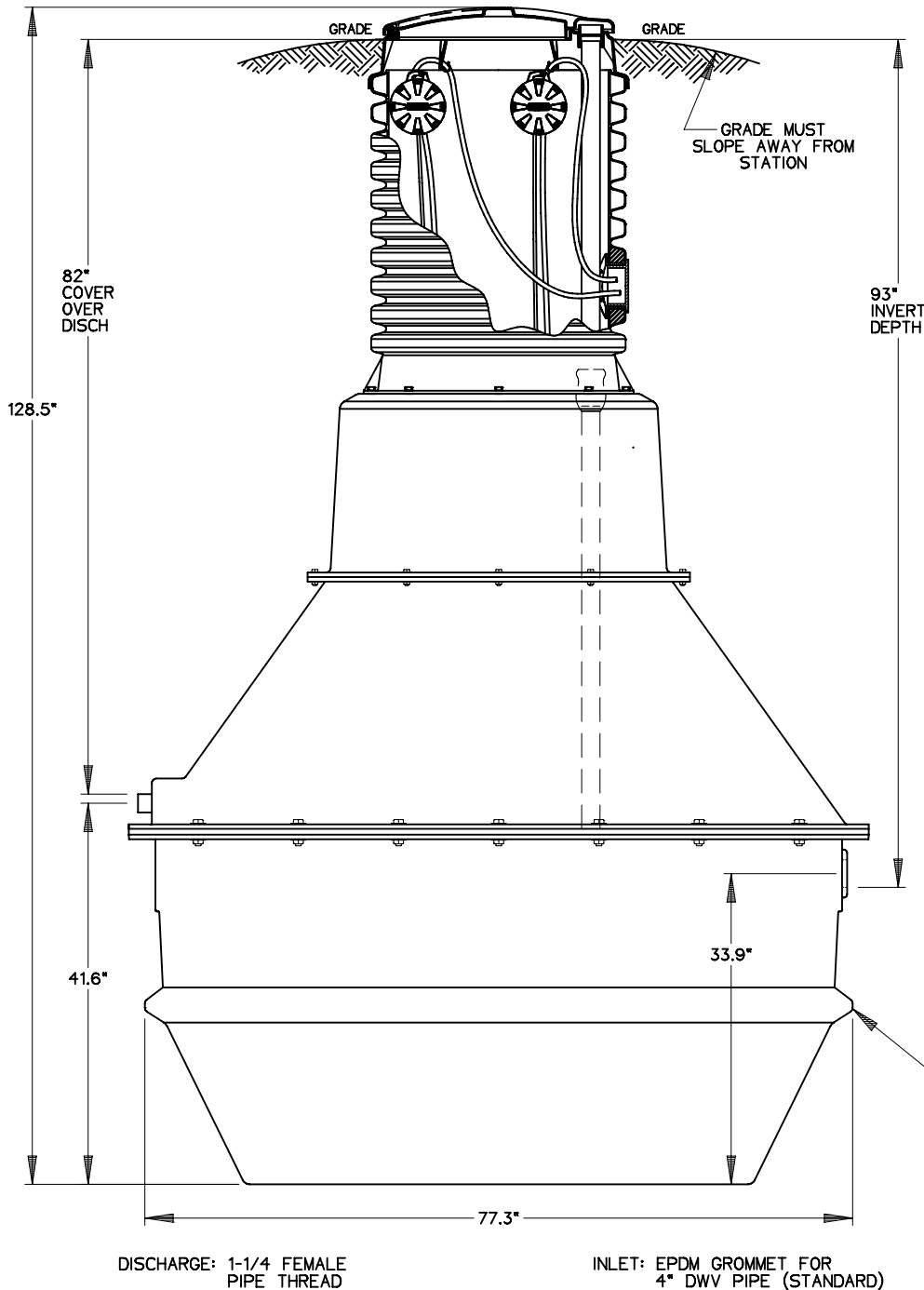
SGS	MC	01/17/12	C	
DR BY	CHK'D	DATE	ISSUE	SCALE



MODEL DX502, EXPLOSIONPROOF PUMP
DETAIL SHEET

NA0204P02

DX502-129



DETAIL, FIELD JOINT

SEE INSTALLATION INSTRUCTIONS FOR FURTHER DETAILS

CONCRETE BALLAST MAY BE REQUIRED
SEE INSTALLATION INSTRUCTIONS
FOR DETAILS

NOTE:

THE PUMP ASSEMBLIES ARE LISTED BY ETL TO FACTORY MUTUAL (FM) STANDARDS FOR CLASS I, DIVISION I, GROUP D, THE LEVEL CONTROL SYSTEM, INTEGRAL TO THE PUMP, IS INTRINSICALLY SAFE (THE STATION IS NOT PART OF THE LISTING)
-ALSO AVAILABLE APPROVED BY CSA FOR CLASS 1, DIVISION 1, GROUP D

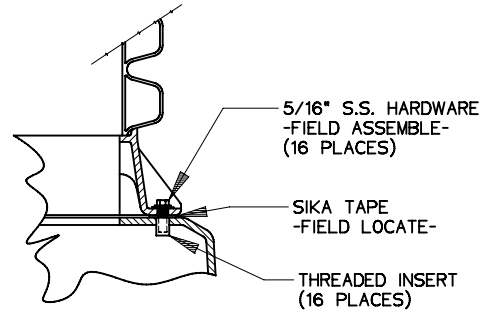
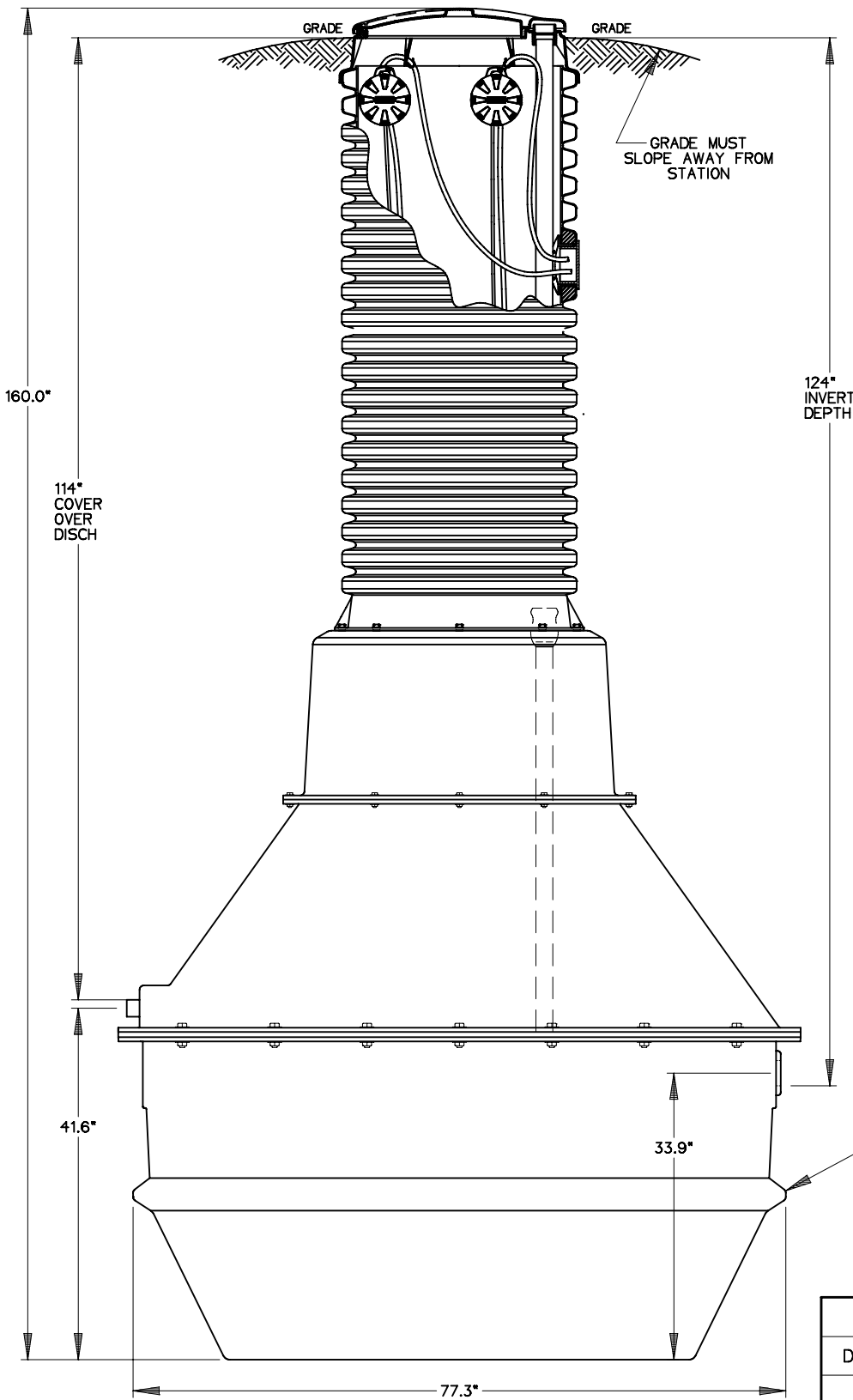
SGS	CAH	12/3/10	A	1/20
DR BY	CHK'D	DATE	ISSUE	SCALE



MODEL DH502-129
EXPLOSIONPROOF PUMP

NA0204P03

DX502-160



DETAIL, FIELD JOINT

SEE INSTALLATION INSTRUCTIONS FOR FURTHER DETAILS

CONCRETE BALLAST MAY BE REQUIRED
SEE INSTALLATION INSTRUCTIONS FOR DETAILS

DISCHARGE: 1-1/4 FEMALE PIPE THREAD

INLET: EPDM GROMMET FOR 4" DWV PIPE (STANDARD)

NOTE:

THE PUMP ASSEMBLIES ARE LISTED BY ETL TO FACTORY MUTUAL (FM) STANDARDS FOR CLASS I, DIVISION I, GROUP D, THE LEVEL CONTROL SYSTEM, INTEGRAL TO THE PUMP, IS INTRINSICALLY SAFE (THE STATION IS NOT PART OF THE LISTING)
-ALSO AVAILABLE APPROVED BY CSA FOR CLASS 1, DIVISION 1, GROUP D

SGS	CAH	12/3/10	A	1/20
DR BY	CHK'D	DATE	ISSUE	SCALE



MODEL DX502-160
EXPLOSIONPROOF PUMP

NA0204P04