

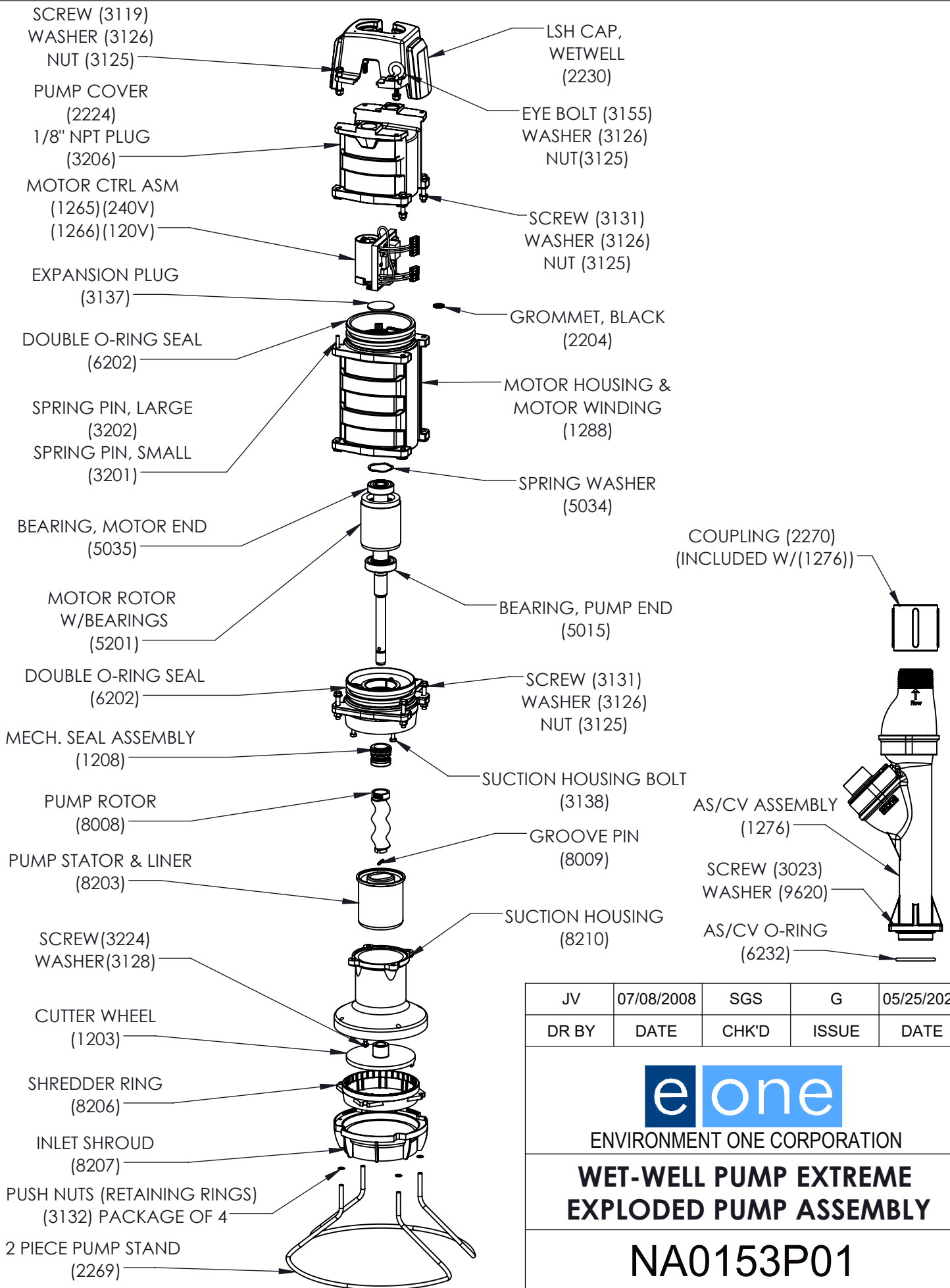
SGS	08/28/2008	JG	G	11/07/2022
DR BY	DATE	CHK'D	ISSUE	DATE



ENVIRONMENT ONE CORPORATION

**DRY-WELL PUMP EXTREME**  
EXPLODED PUMP ASSEMBLY

**NA0152P01**



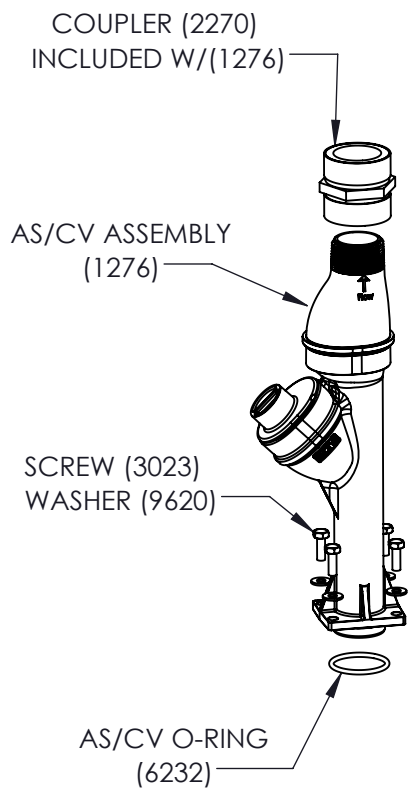
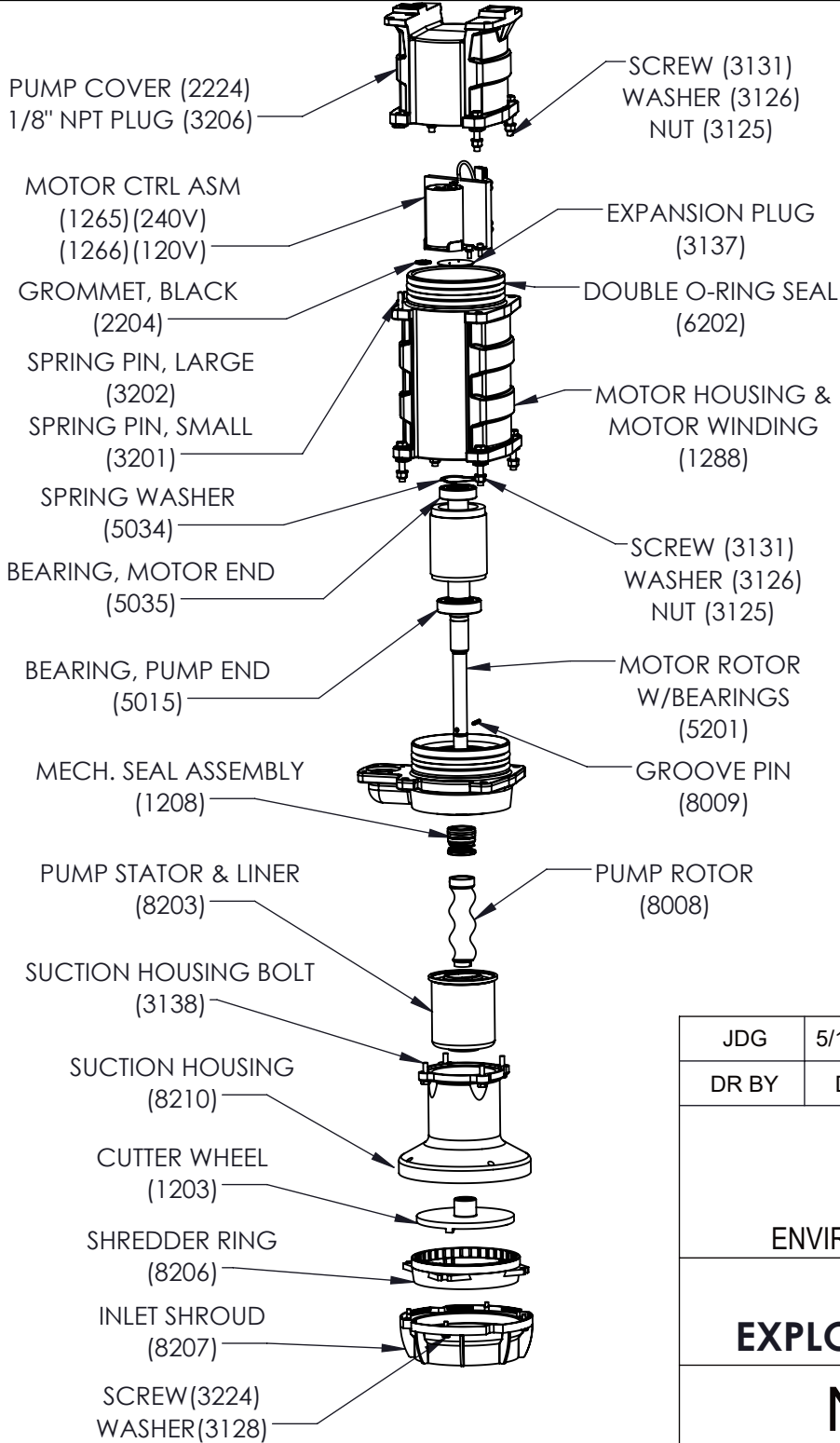
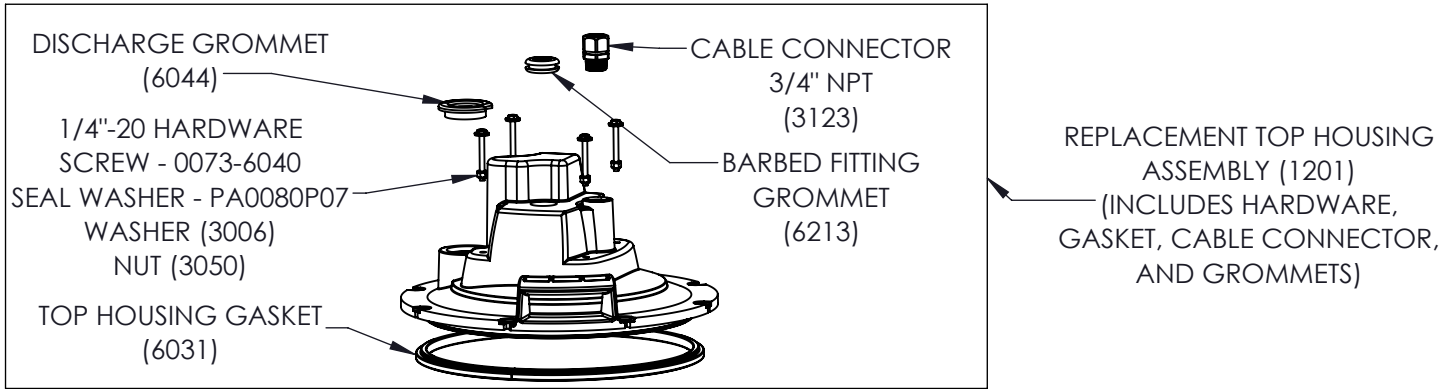
JV	07/08/2008	SGS	G	05/25/2023
DR BY	DATE	CHK'D	ISSUE	DATE



ENVIRONMENT ONE CORPORATION

**WET-WELL PUMP EXTREME  
EXPLODED PUMP ASSEMBLY**

**NA0153P01**

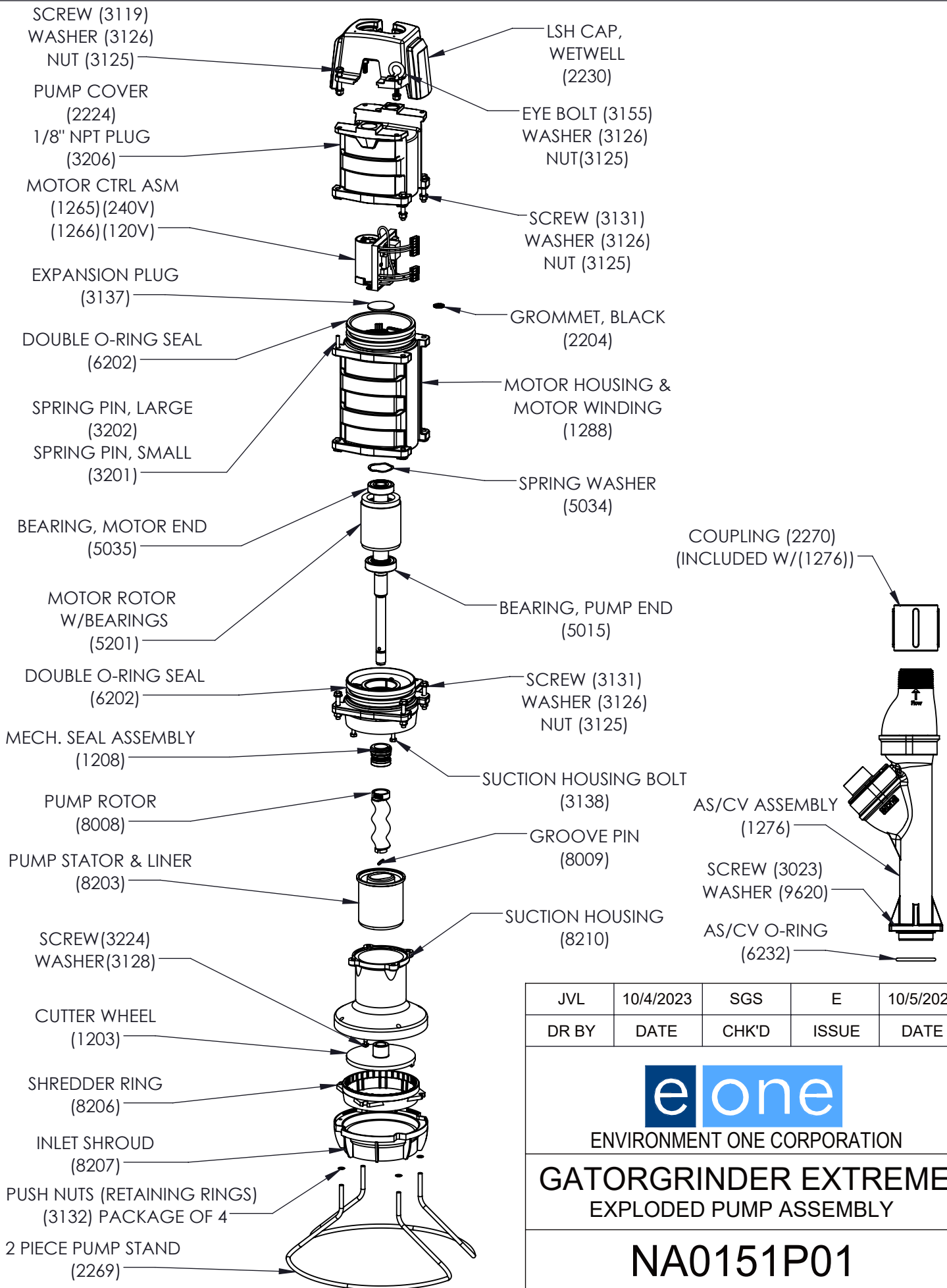


JDG	5/16/2023	JVL	A	5/16/2023
DR BY	DATE	CHK'D	ISSUE	DATE

**e one**  
 ENVIRONMENT ONE CORPORATION

**EXTREME IH091  
 EXPLODED PUMP ASSEMBLY**

**NA0152P02**



JVL	10/4/2023	SGS	E	10/5/2023
DR BY	DATE	CHK'D	ISSUE	DATE

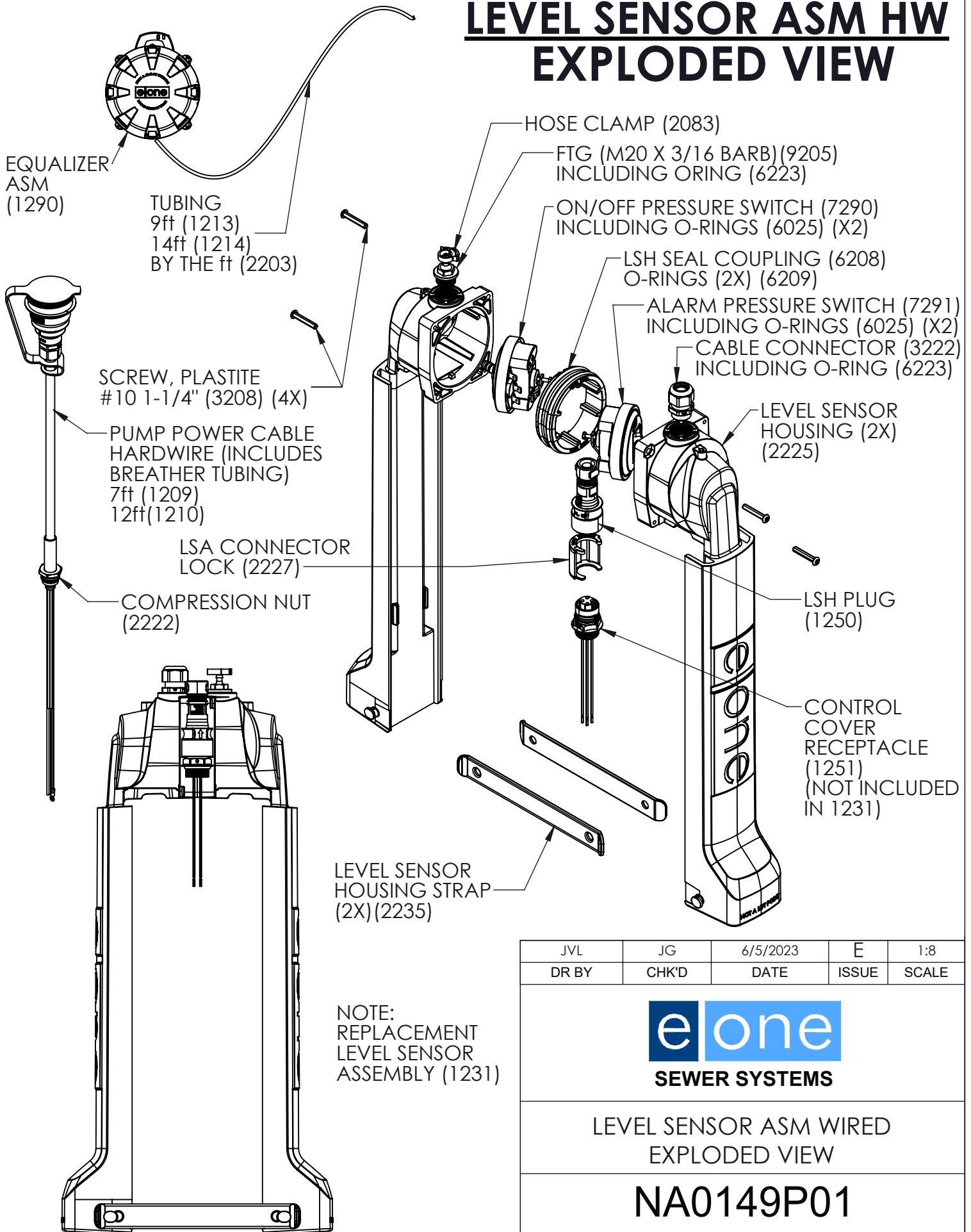


ENVIRONMENT ONE CORPORATION

**GATORGRINDER EXTREME  
EXPLODED PUMP ASSEMBLY**

**NA0151P01**

# LEVEL SENSOR ASM HW EXPLODED VIEW



JVL	JG	6/5/2023	E	1:8
DR BY	CHK'D	DATE	ISSUE	SCALE



LEVEL SENSOR ASM WIRED  
EXPLODED VIEW

NA0149P01