

## WH482/WR482

### General Features

The model WH482 or WR482 grinder pump station is a complete unit that includes: two grinder pumps, check valve, polyethylene tank, controls, and alarm panel. Designed for higher flow applications where local codes dictate higher storage requirements. The lower portion of the tank has a smaller diameter, tapered down to a dish-shaped bottom. The large tank access opening easily accommodates installation of the grinder pumps and equipment.

- Rated for flows of 3500 gpd (13,249 lpd)
- 486 gallons (1840 liters) of capacity
- Standard outdoor heights range from 75 inches to 122 inches

The WH482 is the “hardwired,” or “wired,” model where a cable connects the motor controls to the level controls through watertight penetrations.

The WR482 is the “radio frequency identification” (RFID), or “wireless,” model that uses wireless technology to communicate between the level controls and the motor controls.

### Operational Information

#### *Motor*

1 hp, 1,725 rpm, high torque, capacitor start, thermally protected, 120/240V, 60 Hz, 1 phase

#### *Inlet Connections*

4-inch inlet grommet standard for DWV pipe. Other inlet configurations available from the factory.

#### *Discharge Connections*

Pump discharge terminates in 1.25-inch NPT female thread. Can easily be adapted to 1.25-inch PVC pipe or any other material required by local codes.

#### *Discharge*

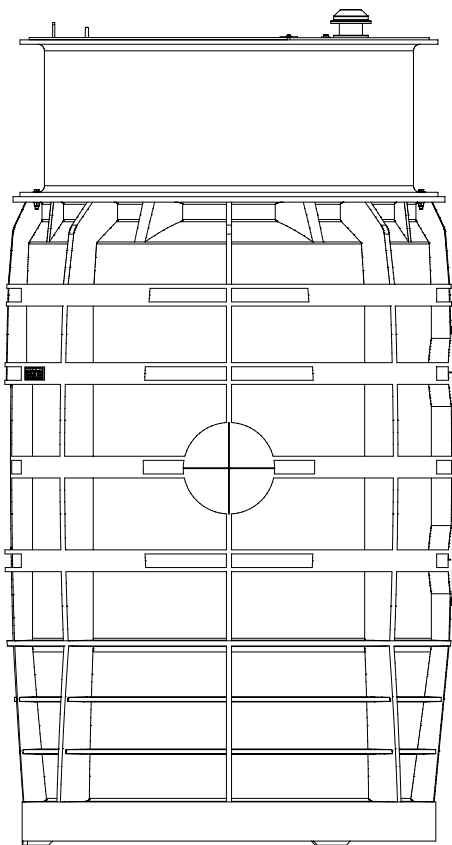
15 gpm at 0 psig (0.95 lps at 0 m)  
11 gpm at 40 psig (0.69 lps at 28 m)  
7.8 gpm at 80 psig (0.49 lps at 56 m)

### Accessories

E/One requires that the Uni-Lateral, E/One’s own stainless steel check valve, be installed between the grinder pump station and the street main for added protection against backflow.

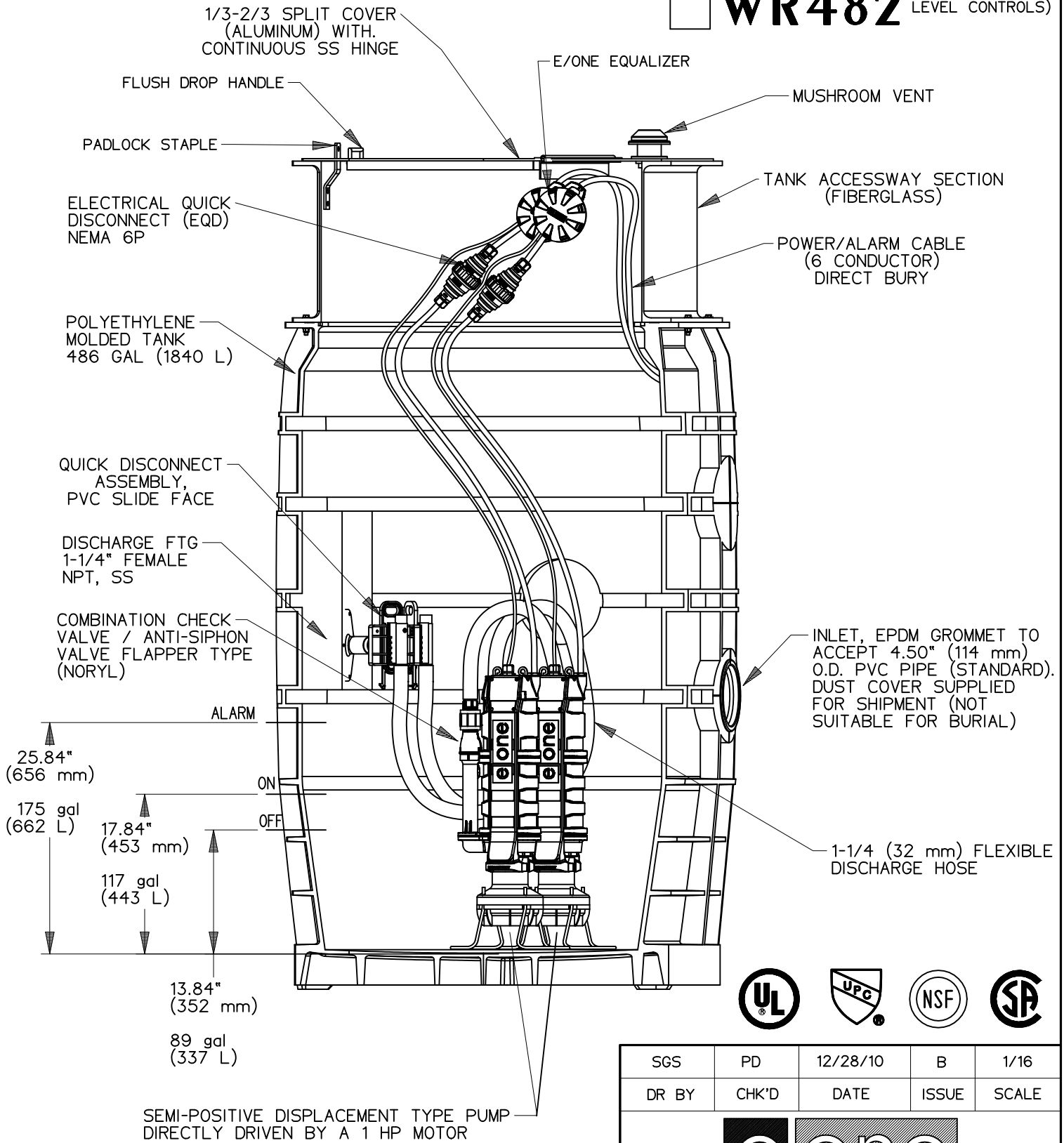
Alarm panels are available with a variety of options, from basic monitoring to advanced notice of service requirements.

The Remote Sentry is ideal for installations where the alarm panel may be hidden from view.



# OPTIONS : WH482 (HARD WIRED LEVEL CONTROLS)

# WR482 (WIRELESS LEVEL CONTROLS)



CONCRETE BALLAST MAY BE REQUIRED  
SEE INSTALLATION INSTRUCTIONS  
FOR DETAILS

NOTE: DIMENSIONS ARE FOR REFERENCE ONLY



SGS	PD	12/28/10	B	1/16
DR BY	CHK'D	DATE	ISSUE	SCALE



MODEL WH482 / WR482  
DETAIL SHEET

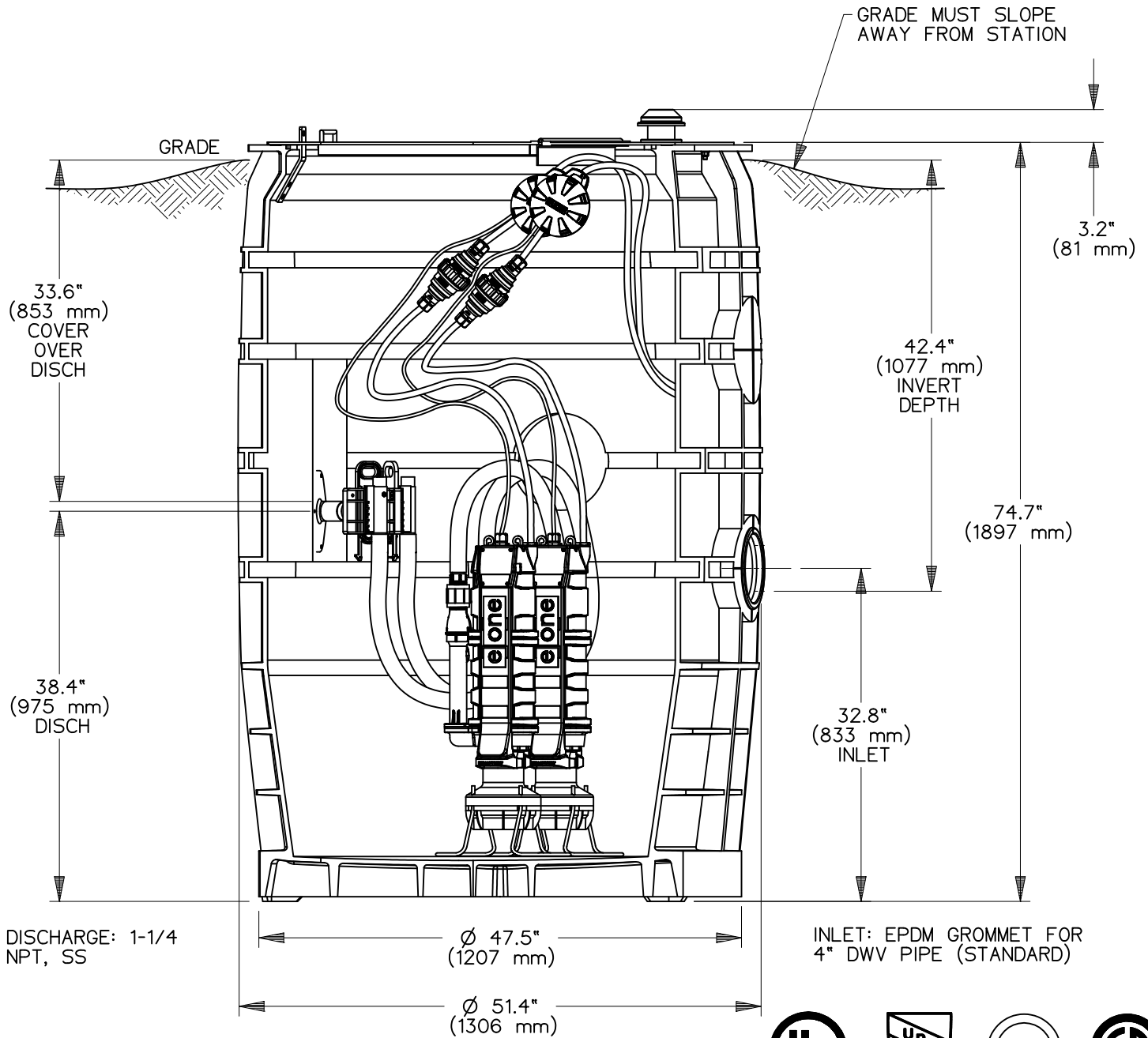
NA0211P02

**OPTIONS :**  **WH482-75**

(HARD WIRED  
LEVEL CONTROLS)

**WR482-75**

(WIRELESS  
LEVEL CONTROLS)



SGS	PD	12/28/10	B	1/16
DR BY	CHK'D	DATE	ISSUE	SCALE



MODEL WH482-75 / WR482-75

NA0211P03

CONCRETE BALLAST MAY BE REQUIRED  
SEE INSTALLATION INSTRUCTIONS  
FOR DETAILS

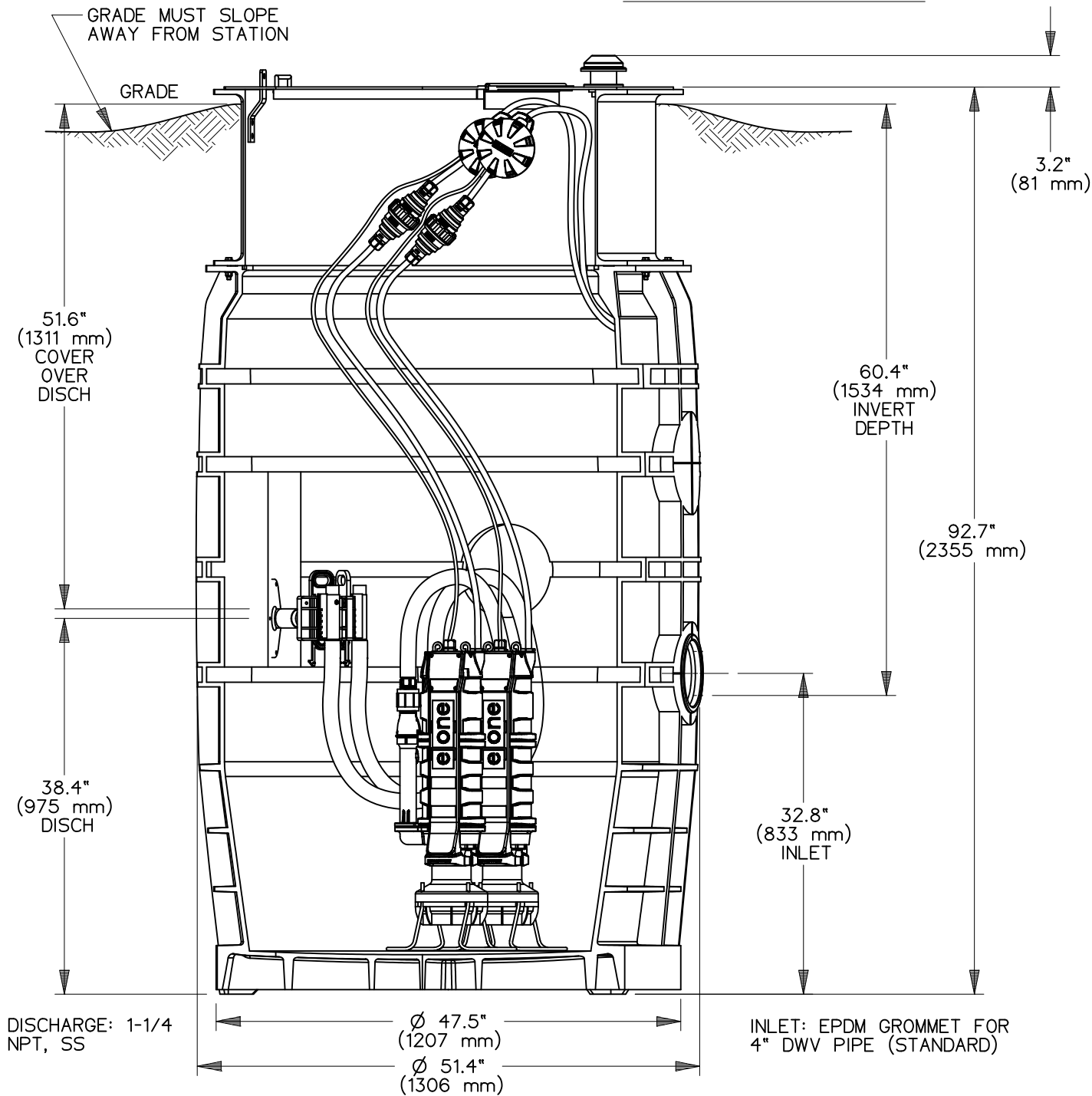
NOTE: DIMENSIONS ARE FOR REFERENCE ONLY

**OPTIONS :**  **WH482-92**

(HARD WIRED  
LEVEL CONTROLS)

**WR482-92**

(WIRELESS  
LEVEL CONTROLS)

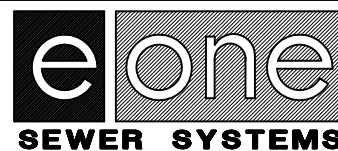


CONCRETE BALLAST MAY BE REQUIRED  
SEE INSTALLATION INSTRUCTIONS  
FOR DETAILS

NOTE: DIMENSIONS ARE FOR REFERENCE ONLY



SGS	PD	12/28/10	B	1/16
DR BY	CHK'D	DATE	ISSUE	SCALE



MODEL WH482-92 / WR482-92

NA0211P04

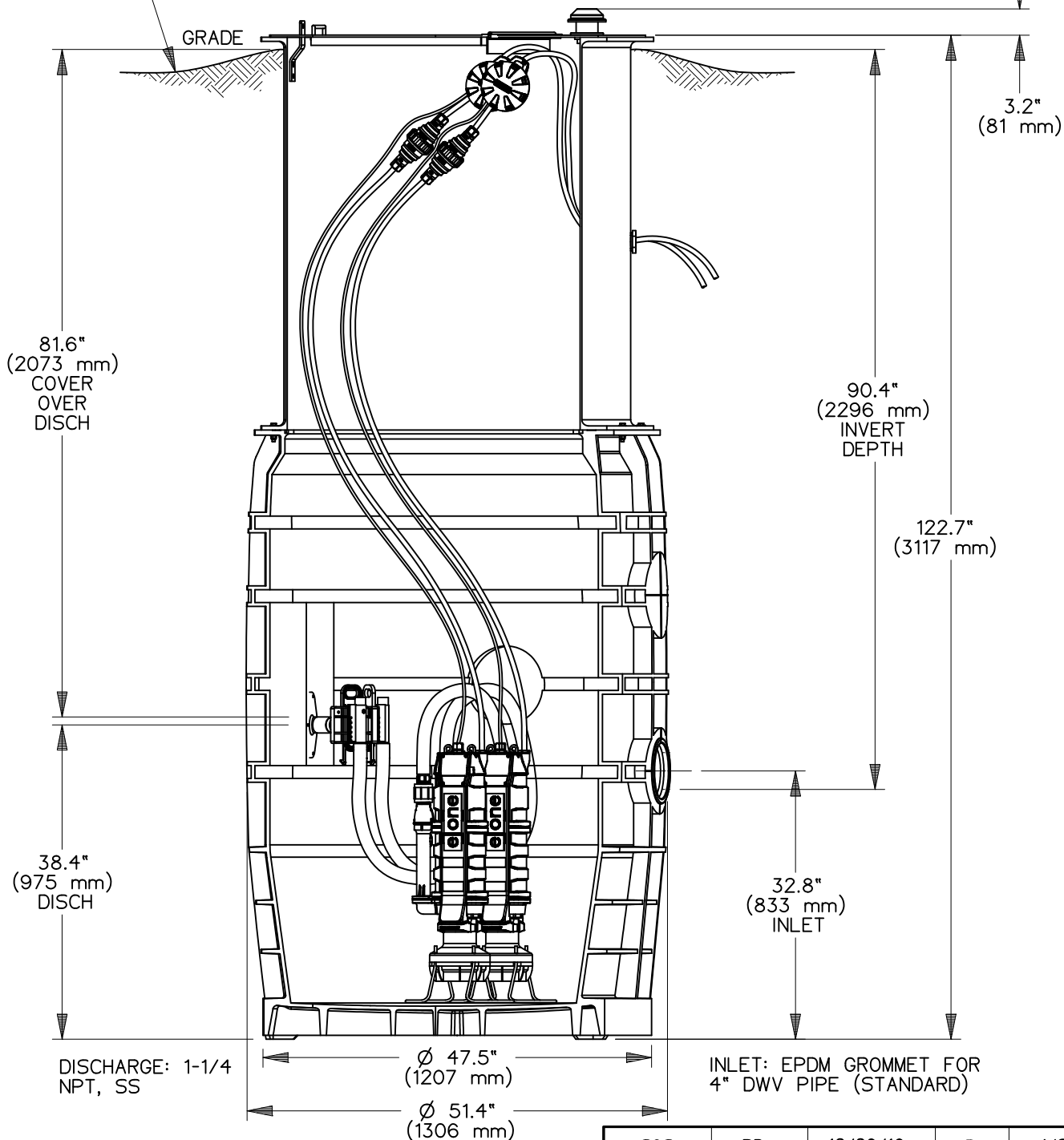
OPTIONS :  **WH482-122**

(HARD WIRED  
LEVEL CONTROLS)

**WR482-122**

(WIRELESS  
LEVEL CONTROLS)

GRADE MUST SLOPE  
AWAY FROM STATION

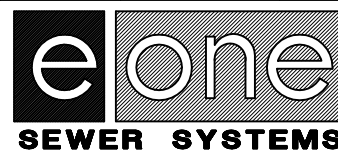


CONCRETE BALLAST MAY BE REQUIRED  
SEE INSTALLATION INSTRUCTIONS  
FOR DETAILS

NOTE: DIMENSIONS ARE FOR REFERENCE ONLY



SGS	PD	12/28/10	B	1/20
DR BY	CHK'D	DATE	ISSUE	SCALE



MODEL WH482-122 / WR482-122

NA0211P05