

WH483/WR483

General Features

The model WH483 or WR483 grinder pump station is a complete unit that includes: three grinder pumps, check valve, polyethylene tank, controls, and alarm panel. Designed for higher flow applications where local codes dictate higher storage requirements. The lower portion of the tank has a smaller diameter, tapered down to a dish-shaped bottom. The large tank access opening easily accommodates installation of the grinder pumps and equipment.

- Rated for flows of 5000 gpd (18,927 lpd)
- 486 gallons (1840 liters) of capacity
- Standard outdoor heights range from 75 inches to 122 inches

The WH483 is the “hardwired,” or “wired,” model where a cable connects the motor controls to the level controls through watertight penetrations.

The WR483 is the “radio frequency identification” (RFID), or “wireless,” model that uses wireless technology to communicate between the level controls and the motor controls.

Operational Information

Motor

1 hp, 1,725 rpm, high torque, capacitor start, thermally protected, 120/240V, 60 Hz, 1 phase

Inlet Connections

4-inch inlet grommet standard for DWV pipe. Other inlet configurations available from the factory.

Discharge Connections

Pump discharge terminates in 1.25-inch NPT female thread. Can easily be adapted to 1.25-inch PVC pipe or any other material required by local codes.

Discharge

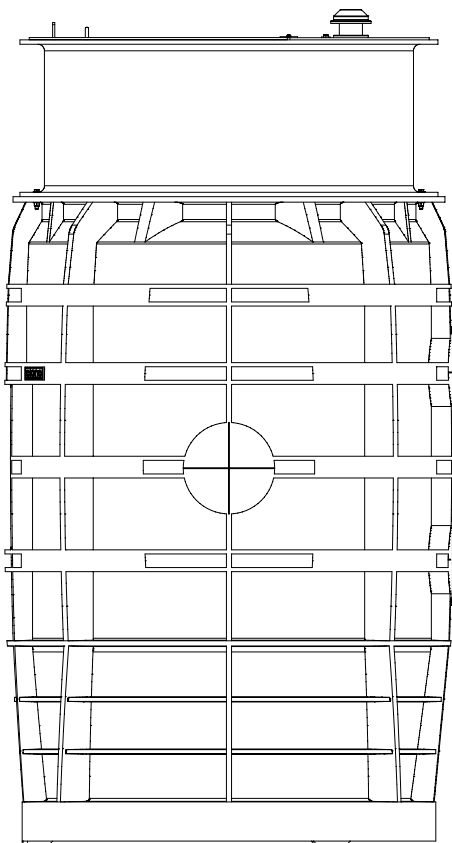
15 gpm at 0 psig (0.95 lps at 0 m)
11 gpm at 40 psig (0.69 lps at 28 m)
7.8 gpm at 80 psig (0.49 lps at 56 m)

Accessories

E/One requires that the Uni-Lateral, E/One’s own stainless steel check valve, be installed between the grinder pump station and the street main for added protection against backflow.

Alarm panels are available with a variety of options, from basic monitoring to advanced notice of service requirements.

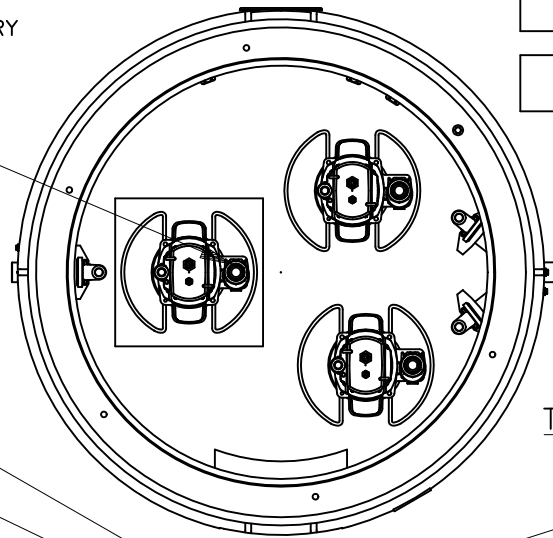
The Remote Sentry is ideal for installations where the alarm panel may be hidden from view.



STATION USES 1 DUPLEX MOD T260
ALARM PANEL AND 1 SIMPLEX SENTRY
ALARM PANEL

WH483 (HARD WIRED
LEVEL CONTROLS)
 WR483 (WIRELESS
LEVEL CONTROLS)

COMBINATION CHECK
VALVE / ANTI-SIPHON
VALVE FLAPPER TYPE
(NORYL)



TOP VIEW W/LID NOT SHOWN

E/ONE EQUALIZER

1/3-2/3 SPLIT COVER
W/HANDLE &
PADLOCK STAPLE
(ALUMINUM)

ELECTRICAL QUICK
DISCONNECT (EQD)
NEMA 6P

POLYETHYLENE
MOLDED TANK
486 GAL (1840 L)

QUICK DISCONNECT
ASSEMBLY,
PVC SLIDE FACE

DISCHARGE FTG
1-1/4" FEMALE
NPT, SS (X2)

MUSHROOM VENT

TANK ACCESSWAY SECTION
(FIBERGLASS)

POWER/ALARM CABLE
(6 CONDUCTOR)
DIRECT BURY

CABLE CONNECTOR

BULKHEAD FITTING

NYLON LIFTING HARNESS

DISCHARGE WYE MANIFOLD
(SS) (X2)

INLET, EPDM GROMMET
TO ACCEPT 4.50" (114 mm)
O.D. PVC PIPE (STANDARD).
DUST COVER SUPPLIED
FOR SHIPMENT (NOT
SUITABLE FOR BURIAL)

1-1/4" (32 mm) FLEXIBLE
DISCHARGE HOSE

25.84"
(656 mm)
175 gal
(662 L)
17.84"
(453 mm)
117 gal
(443 L)
13.84"
(352 mm)
89 gal
(337 L)

ALARM

ON

OFF

BACK-UP PUMP, ON A 4" (102 mm)
PEDESTAL (PROVIDED BY OTHERS)

SEMI-POSITIVE DISPLACEMENT TYPE PUMP
DIRECTLY DRIVEN BY A 1 HP MOTOR



CONCRETE BALLAST MAY BE REQUIRED
SEE INSTALLATION INSTRUCTIONS
FOR DETAILS

NOTE: DIMENSIONS ARE FOR REFERENCE ONLY

SGS	PD	12/28/10	B	1/16
DR BY	CHK'D	DATE	ISSUE	SCALE



MODEL WH483 / WR483
DETAIL SHEET, TRIPLEX

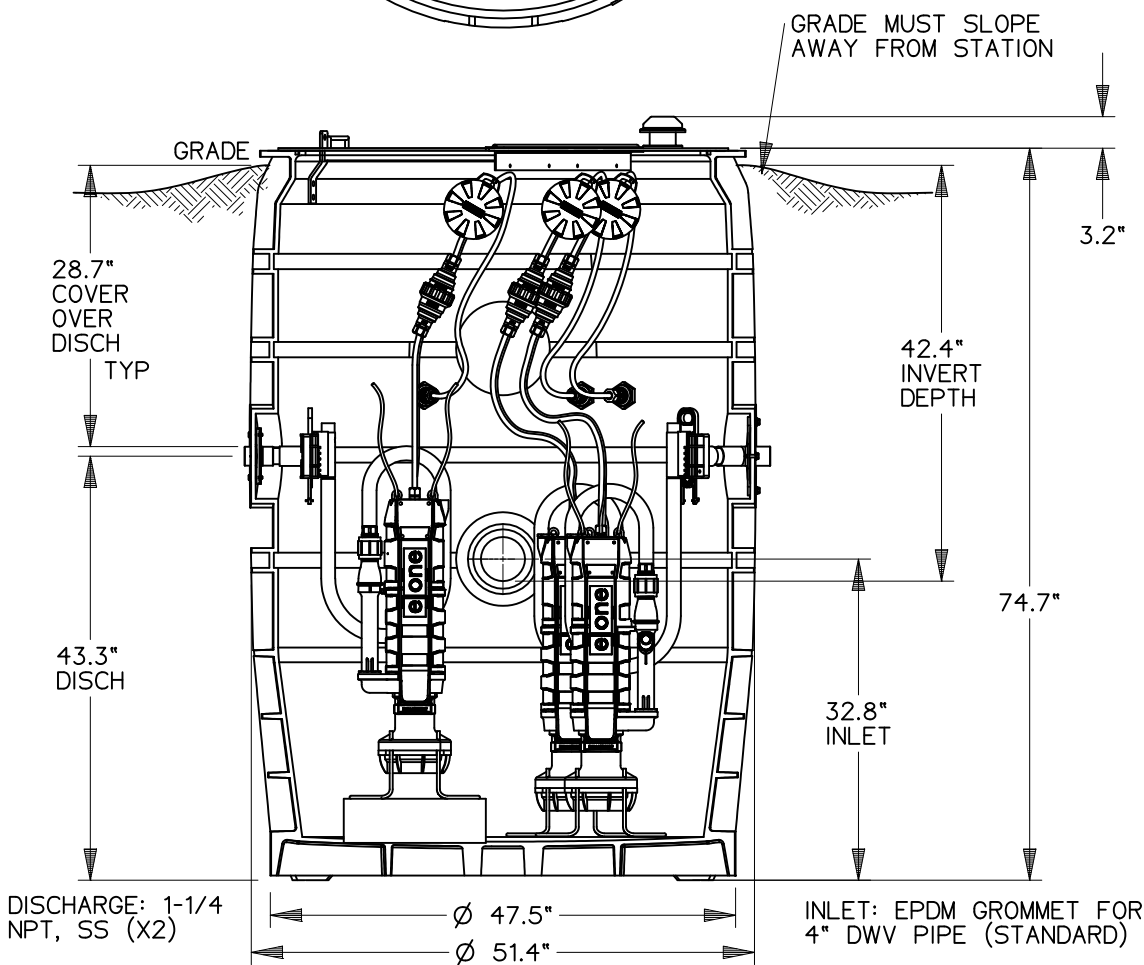
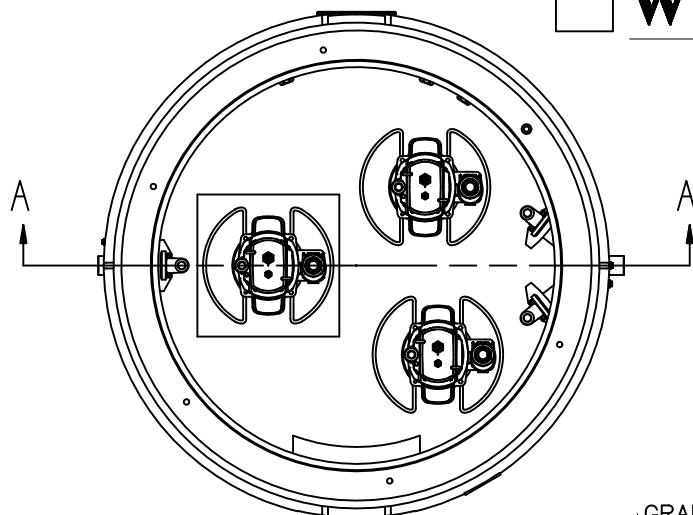
NA0214P02

WH483-75

(HARD WIRED
LEVEL CONTROLS)

WR483-75

(WIRELESS
LEVEL CONTROLS)



28.7"
COVER
OVER
DISCH
TYP

43.3"
DISCH

DISCHARGE: 1-1/4
NPT, SS (X2)

Ø 47.5"

Ø 51.4"

GRADE MUST SLOPE
AWAY FROM STATION

3.2"

42.4"
INVERT
DEPTH

74.7"

32.8"
INLET

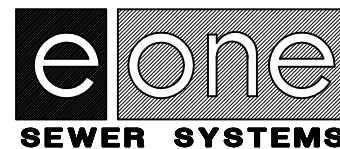
INLET: EPDM GROMMET FOR
4" DWV PIPE (STANDARD)

CONCRETE BALLAST MAY BE REQUIRED
SEE INSTALLATION INSTRUCTIONS
FOR DETAILS

NOTE: DIMENSIONS ARE FOR REFERENCE ONLY



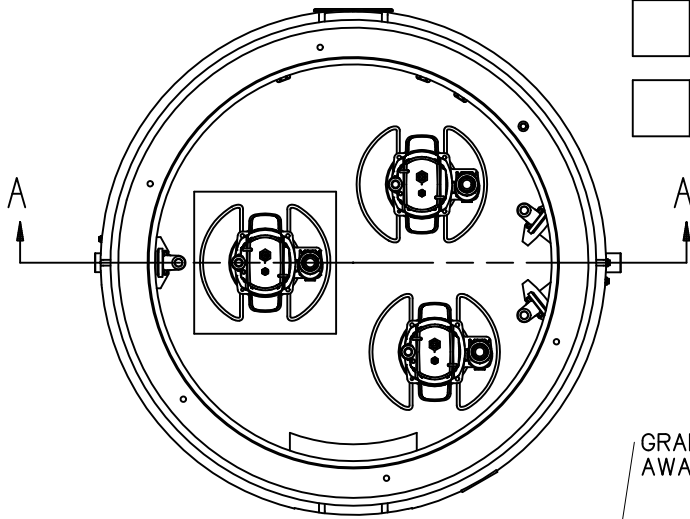
SGS	PD	06/24/10	A	1/16
DR BY	CHK'D	DATE	ISSUE	SCALE



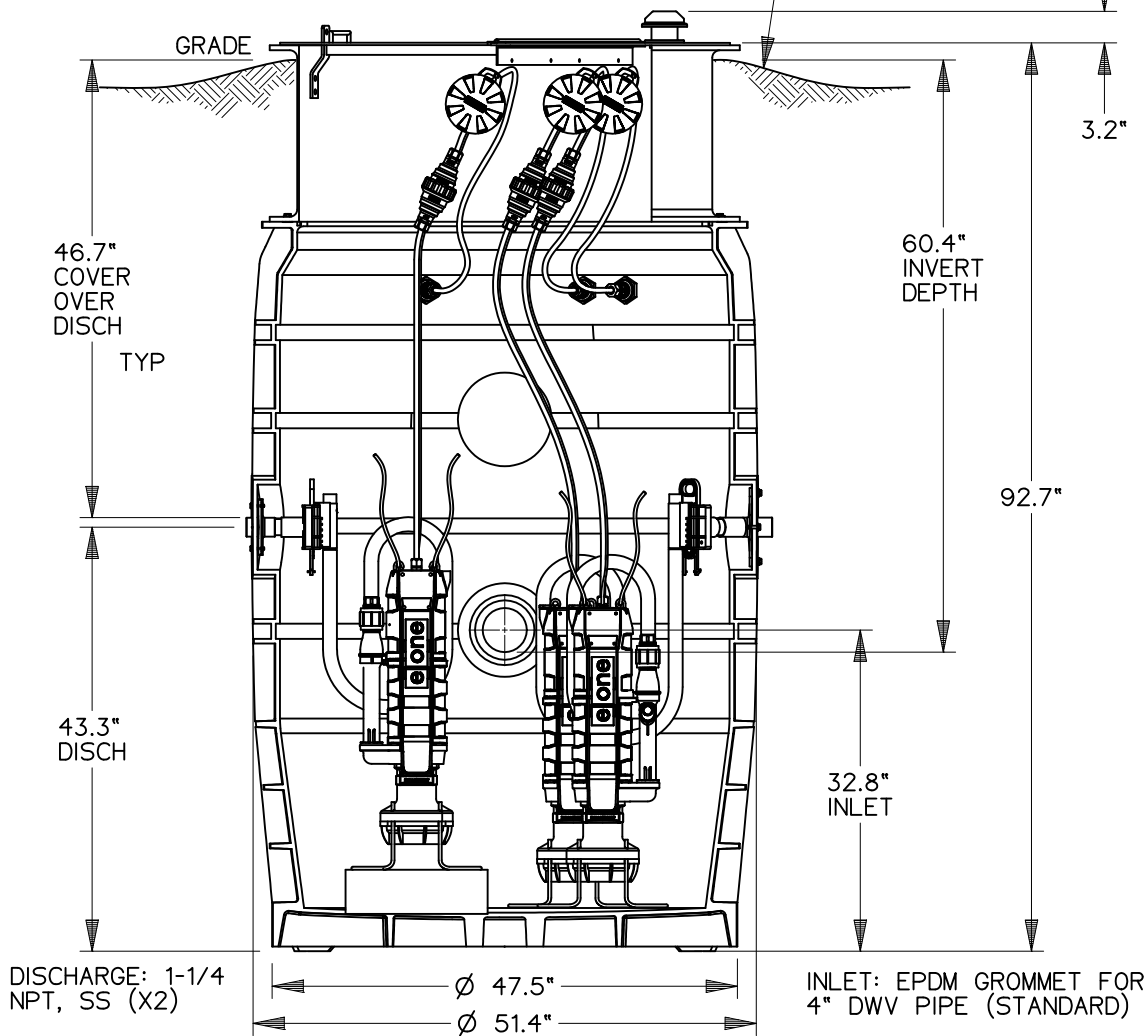
MODEL WH483-75 / WR483-75

NA0214P03

WH483-92 (HARD WIRED LEVEL CONTROLS)
 WR483-92 (WIRELESS LEVEL CONTROLS)



GRADE MUST SLOPE AWAY FROM STATION

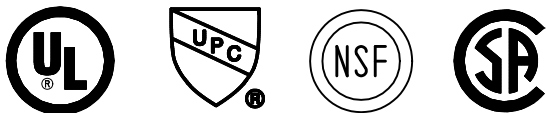


DISCHARGE: 1-1/4 NPT, SS (X2)

INLET: EPDM GROMMET FOR 4\"/>

CONCRETE BALLAST MAY BE REQUIRED
SEE INSTALLATION INSTRUCTIONS
FOR DETAILS

NOTE: DIMENSIONS ARE FOR REFERENCE ONLY



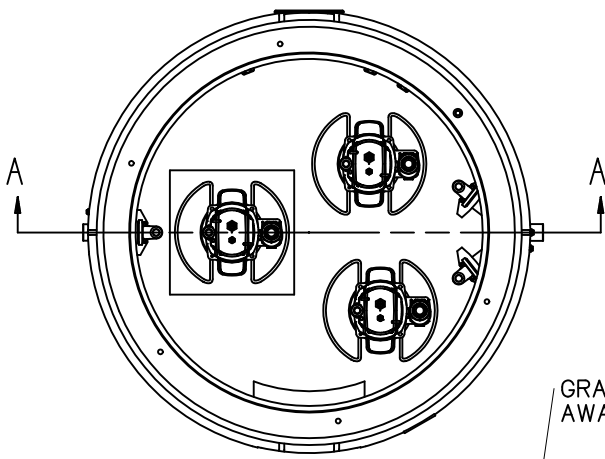
SGS	PD	02/10/11	A	1/16
DR BY	CHK'D	DATE	ISSUE	SCALE



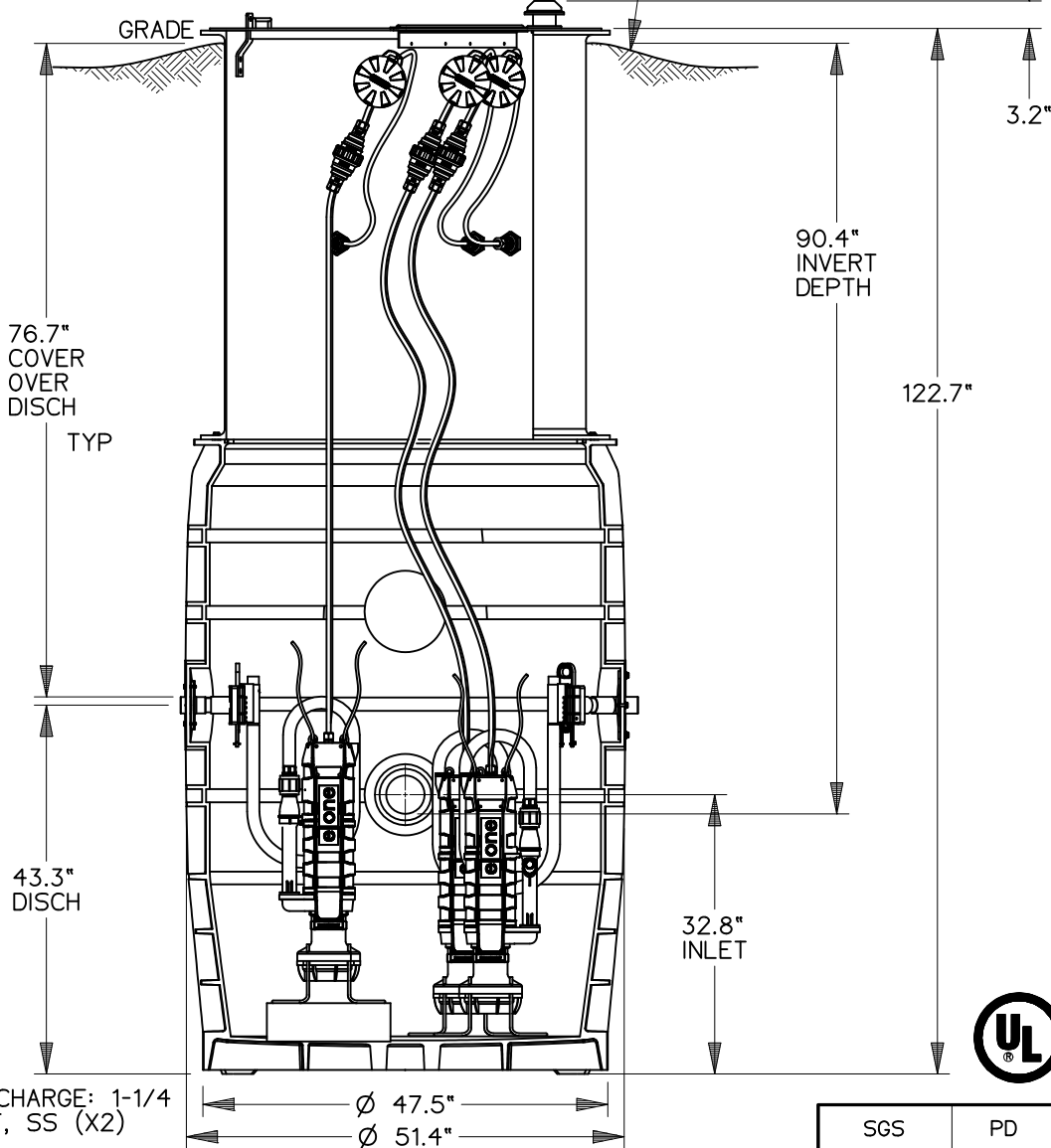
MODEL WH483-92 / WR483-92

NA0214P04

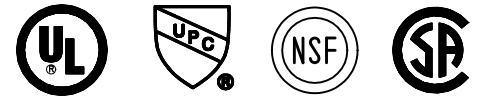
WH483-122 (HARD WIRED LEVEL CONTROLS)
 WR483-122 (WIRELESS LEVEL CONTROLS)



GRADE MUST SLOPE AWAY FROM STATION



INLET: EPDM GROMMET FOR 4" DWV PIPE (STANDARD)



CONCRETE BALLAST MAY BE REQUIRED
 SEE INSTALLATION INSTRUCTIONS
 FOR DETAILS

NOTE: DIMENSIONS ARE FOR REFERENCE ONLY

SGS	PD	02/10/11	A	1/16
DR BY	CHK'D	DATE	ISSUE	SCALE



MODEL WH483-122 / WR483-122

NA0214P05