

WH484/WR484

General Features

The model WH484 or WR484 grinder pump station is a complete unit that includes: four grinder pumps, check valve, polyethylene tank, controls, and alarm panel. Designed for higher flow applications where local codes dictate higher storage requirements. The lower portion of the tank has a smaller diameter, tapered down to a dish-shaped bottom. The large tank access opening easily accommodates installation of the grinder pumps and equipment.

- Rated for flows of 7000 gpd (26,498 lpd)
- 486 gallons (1802 liters) of capacity
- Standard outdoor heights range from 75 inches to 122 inches

The WH484 is the “hardwired,” or “wired,” model where a cable connects the motor controls to the level controls through watertight penetrations.

The WR484 is the “radio frequency identification” (RFID), or “wireless,” model that uses wireless technology to communicate between the level controls and the motor controls.

Operational Information

Motor

1 hp, 1,725 rpm, high torque, capacitor start, thermally protected, 120/240V, 60 Hz, 1 phase

Inlet Connections

4-inch inlet grommet standard for DWV pipe. Other inlet configurations available from the factory.

Discharge Connections

Pump discharge terminates in 1.25-inch NPT female thread. Can easily be adapted to 1.25-inch PVC pipe or any other material required by local codes.

Discharge

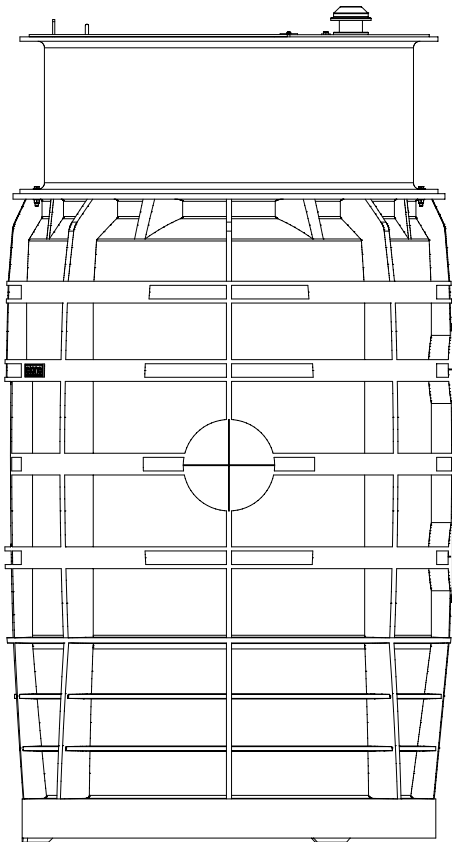
15 gpm at 0 psig (0.95 lps at 0 m)
11 gpm at 40 psig (0.69 lps at 28 m)
7.8 gpm at 80 psig (0.49 lps at 56 m)

Accessories

E/One requires that the Uni-Lateral, E/One’s own stainless steel check valve, be installed between the grinder pump station and the street main for added protection against backflow.

Alarm panels are available with a variety of options, from basic monitoring to advanced notice of service requirements.

The Remote Sentry is ideal for installations where the alarm panel may be hidden from view.



WH484 (HARD WIRED LEVEL CONTROLS)

WR484 (WIRELESS LEVEL CONTROLS)

DISCHARGE WYE MANIFOLD (SS) (X2)



COMBINATION CHECK VALVE / ANTI-SIPHON VALVE FLAPPER TYPE (NORYL)

E/ONE EQUALIZER

1/3-2/3 SPLIT COVER W/HANDLE & PADLOCK STAPLE (ALUMINUM)

ELECTRICAL QUICK DISCONNECT (EQD) NEMA 6P

POLYETHYLENE MOLDED TANK 486 GAL (1840 L)

DISCHARGE FTG 1-1/4" FEMALE NPT, SS (X2)

QUICK DISCONNECT ASSEMBLY, PVC SLIDE FACE

TOP VIEW W/LID NOT SHOWN

MUSHROOM VENT

TANK ACCESSWAY SECTION (FIBERGLASS)

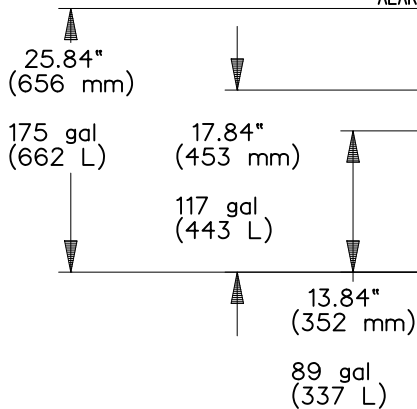
POWER/ALARM CABLE (6 CONDUCTOR) DIRECT BURY

CABLE CONNECTOR

BULKHEAD FITTING

INLET, EPDM GROMMET TO ACCEPT 4.50" (114 mm) O.D. PVC PIPE (STANDARD). DUST COVER SUPPLIED FOR SHIPMENT (NOT SUITABLE FOR BURIAL)

1-1/4" (32 mm) FLEXIBLE DISCHARGE HOSE



SEMI-POSITIVE DISPLACEMENT TYPE PUMP DIRECTLY DRIVEN BY A 1 HP MOTOR

CONCRETE BALLAST MAY BE REQUIRED SEE INSTALLATION INSTRUCTIONS FOR DETAILS

NOTE: DIMENSIONS ARE FOR REFERENCE ONLY

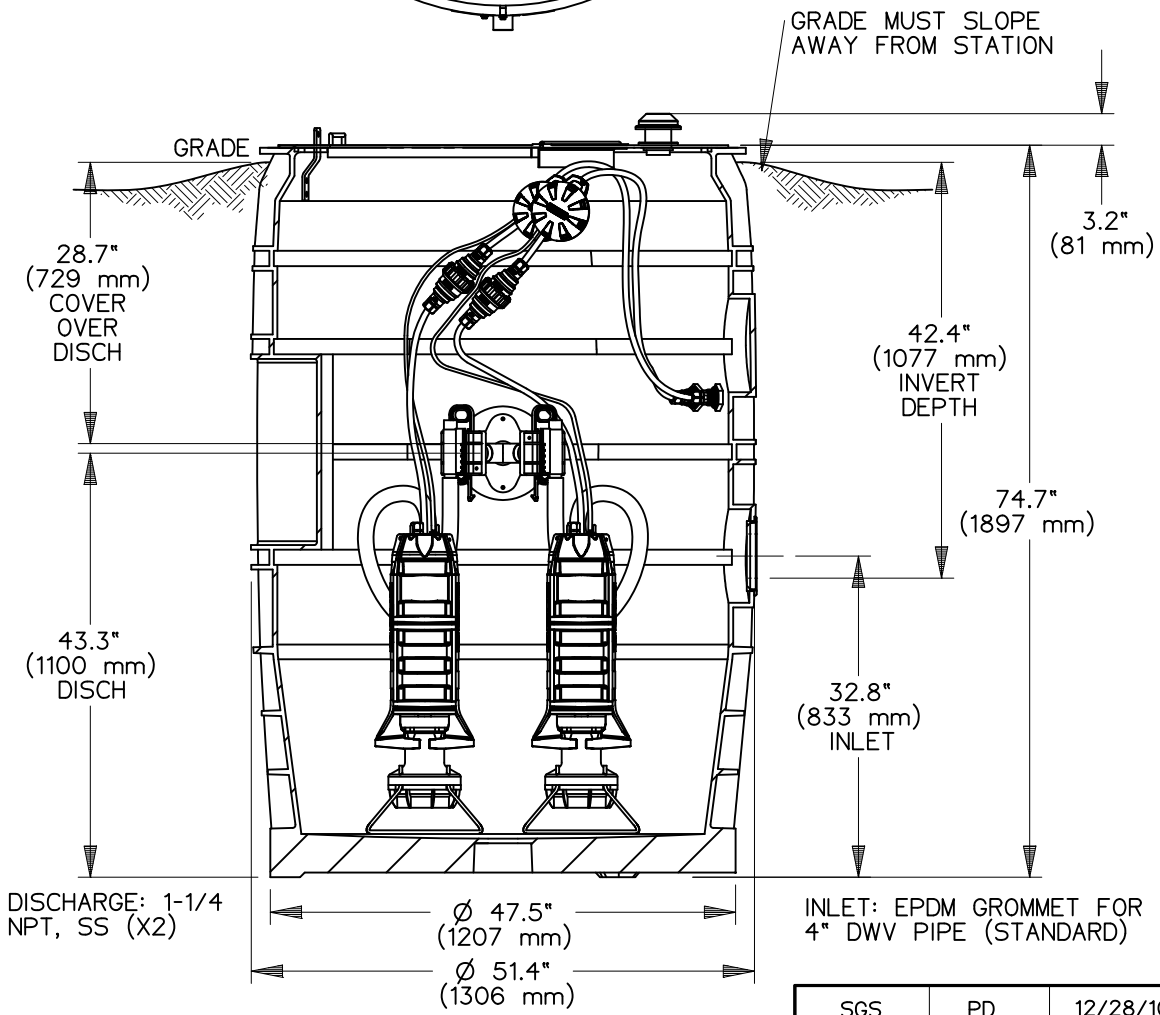
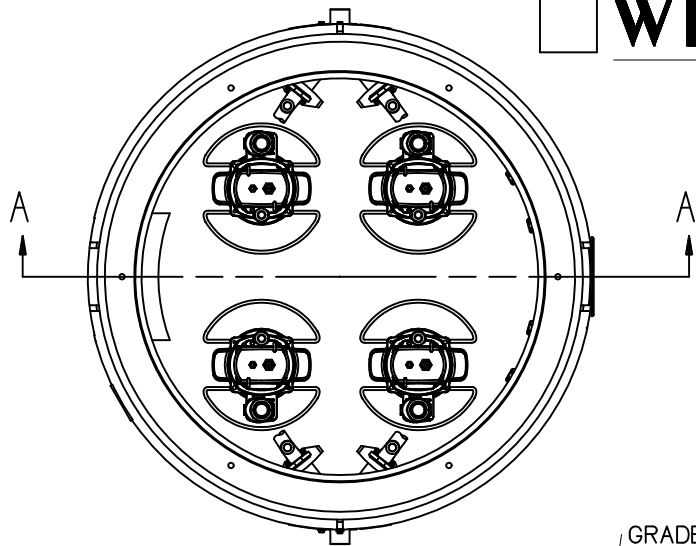
SGS	PD	12/28/10	B	1/16
DR BY	CHK'D	DATE	ISSUE	SCALE



MODEL WH484 / WR484
DETAIL SHEET, QUAD

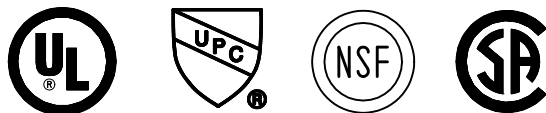
NA0215P02

WH484-75 (HARD WIRED LEVEL CONTROLS)
 WR484-75 (WIRELESS LEVEL CONTROLS)

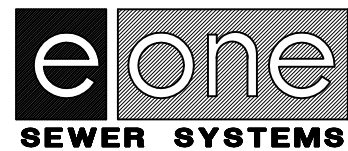


CONCRETE BALLAST MAY BE REQUIRED
SEE INSTALLATION INSTRUCTIONS
FOR DETAILS

NOTE: DIMENSIONS ARE FOR REFERENCE ONLY



SGS	PD	12/28/10	B	1/16
DR BY	CHK'D	DATE	ISSUE	SCALE



MODEL WH484-75 / WR484-75

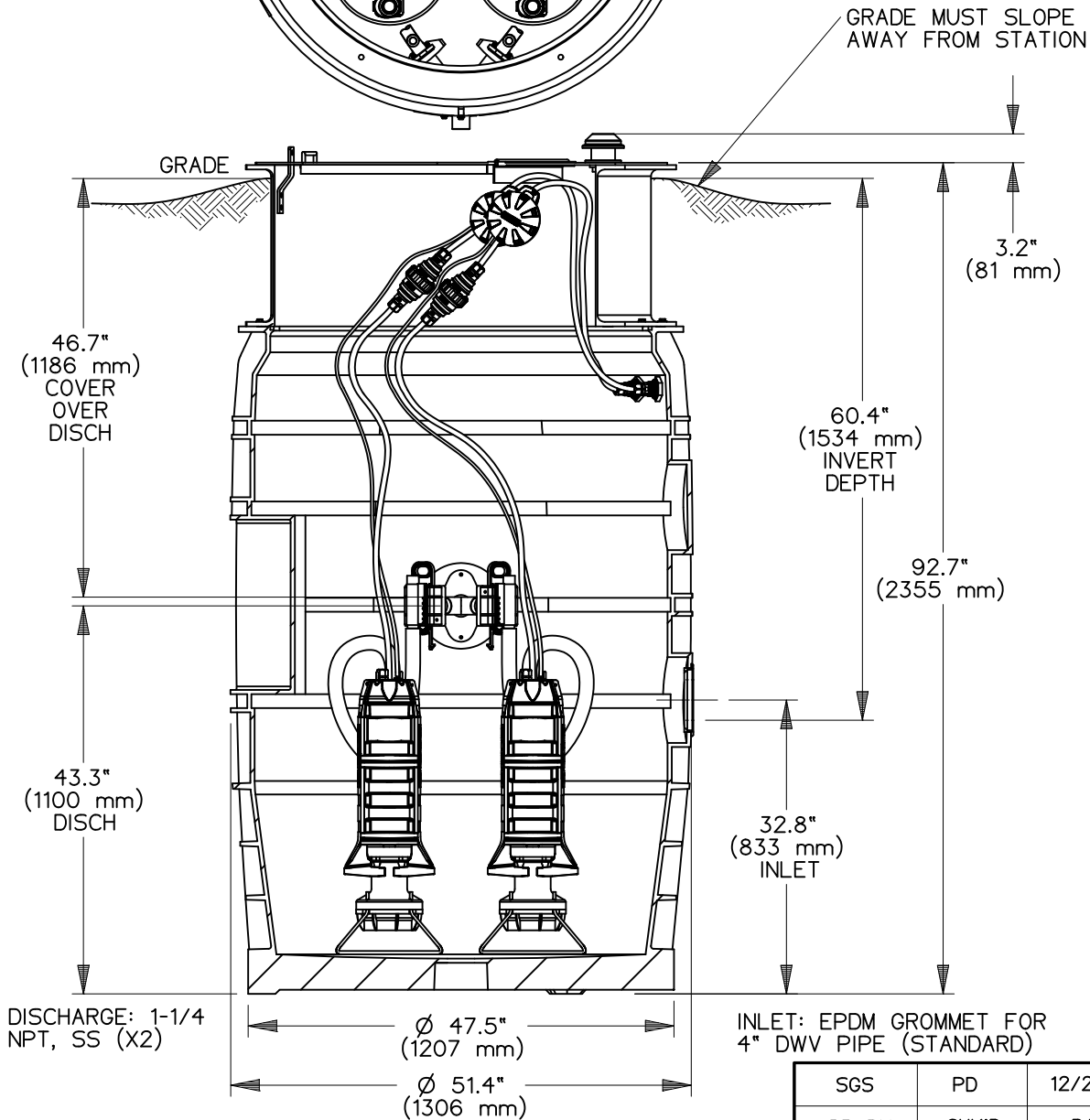
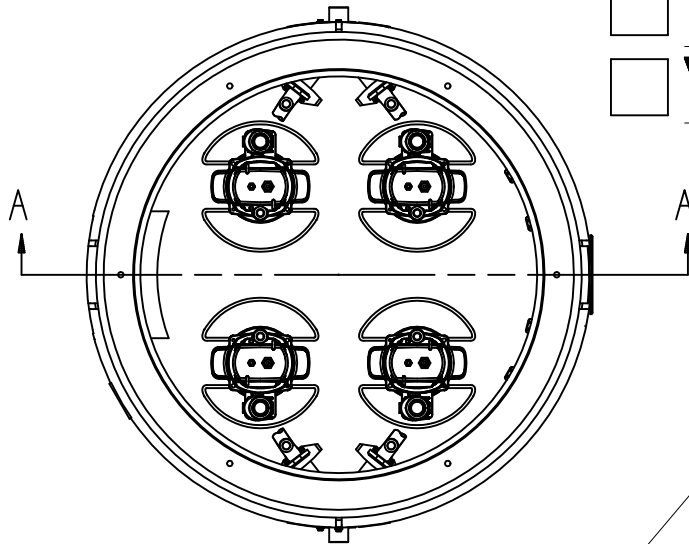
NA0215P03

WH484-92

(HARD WIRED
LEVEL CONTROLS)

WR484-92

(WIRELESS
LEVEL CONTROLS)



DISCHARGE: 1-1/4
NPT, SS (X2)

INLET: EPDM GROMMET FOR
4" DWV PIPE (STANDARD)

CONCRETE BALLAST MAY BE REQUIRED
SEE INSTALLATION INSTRUCTIONS
FOR DETAILS

NOTE: DIMENSIONS ARE FOR REFERENCE ONLY



SGS	PD	12/28/10	B	1/16
DR BY	CHK'D	DATE	ISSUE	SCALE

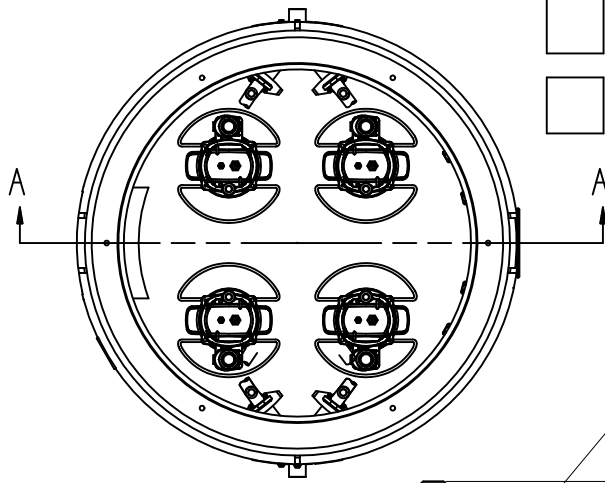


MODEL WH484-92 / WR484-92

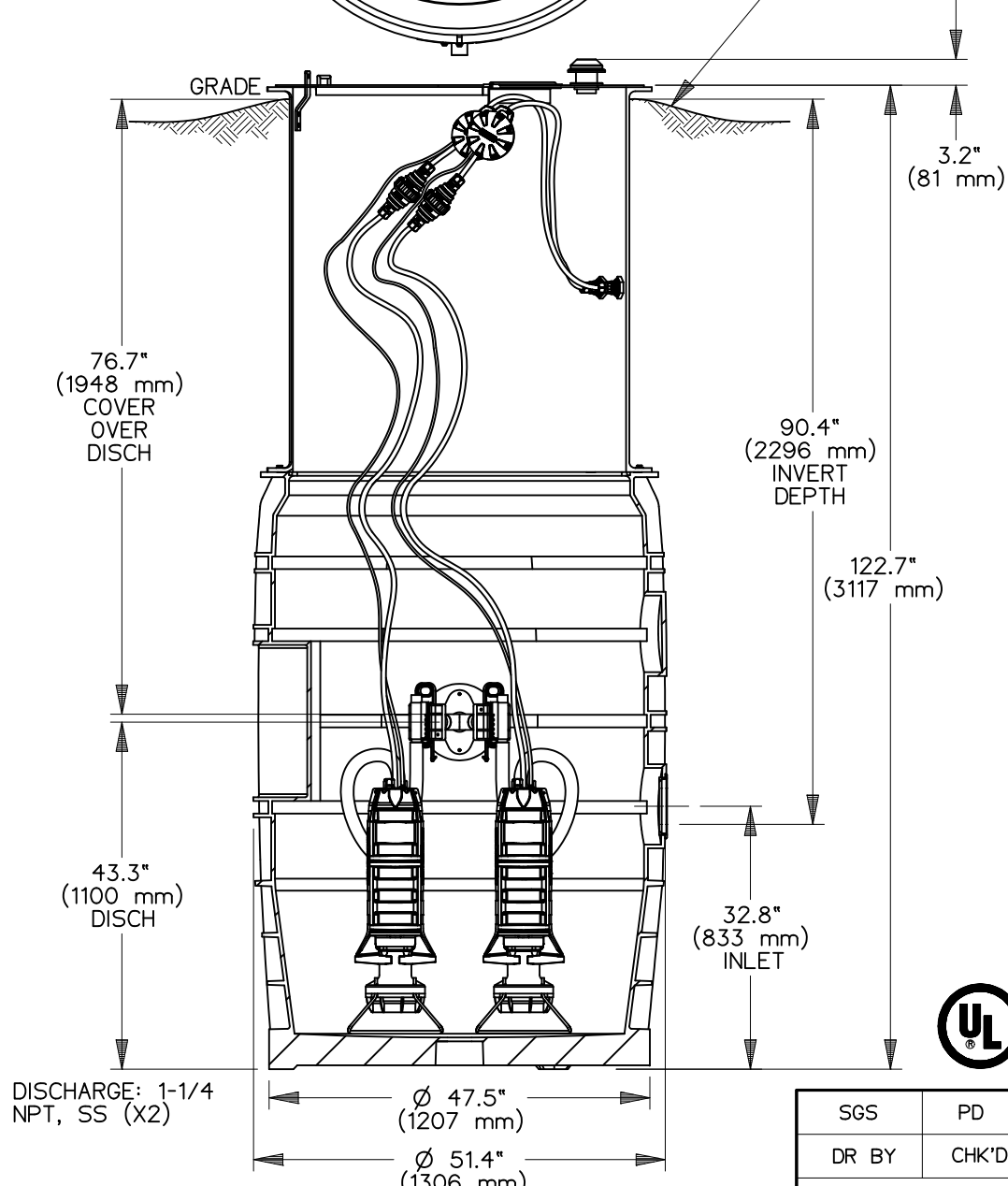
NA0215P04

WH484-122 (HARD WIRED LEVEL CONTROLS)

WR484-122 (WIRELESS LEVEL CONTROLS)



GRADE MUST SLOPE AWAY FROM STATION



DISCHARGE: 1-1/4 NPT, SS (X2)

Ø 47.5" (1207 mm)
Ø 51.4" (1306 mm)

INLET: EPDM GROMMET FOR 4" DWV PIPE (STANDARD)

CONCRETE BALLAST MAY BE REQUIRED
SEE INSTALLATION INSTRUCTIONS
FOR DETAILS

NOTE: DIMENSIONS ARE FOR REFERENCE ONLY

SGS	PD	12/28/10	B	1/16
DR BY	CHK'D	DATE	ISSUE	SCALE



MODEL WH484-122 / WR484-122

NA0215P05