

IH091

General Features

The model IH091 (“Indoor Station”) grinder pump station is a complete unit that includes: the grinder pump, check valve, polyethylene tank, controls, and alarm panel. The IH091 was designed specifically for new home construction.

- 91 gallons (344 liters) of capacity
- On-slab or in-slab installation
- Designed specifically for indoor installation in the mechanical room of the home

The IH091 uses E/One’s “hardwired,” or “wired,” pump model where a cable connects the motor controls to the level controls through watertight penetrations.

Operational Information

Motor

1 hp, 1,725 rpm, high torque, capacitor start, thermally protected, 120/240V, 60 Hz, 1 phase

Inlet Connections

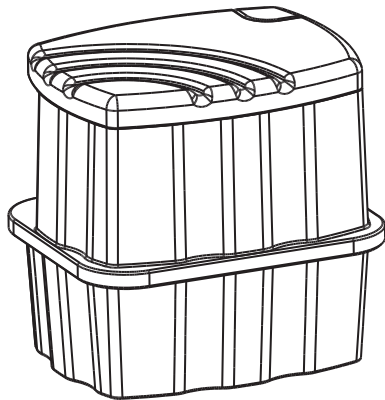
4-inch PVC socket weld

Discharge Connections

Pump discharge terminates in 1.25-inch NPT female thread. Can easily be adapted to 1.25-inch PVC pipe or any other material required by local codes.

Discharge

15 gpm at 0 psig (0.95 lps at 0 m)
11 gpm at 40 psig (0.69 lps at 28 m)
7.8 gpm at 80 psig (0.49 lps at 56 m)



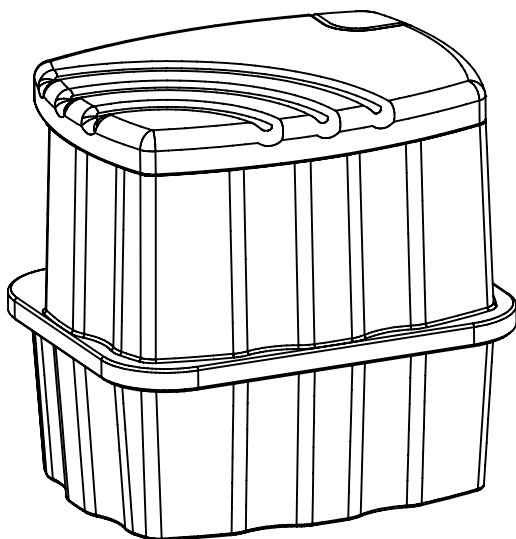
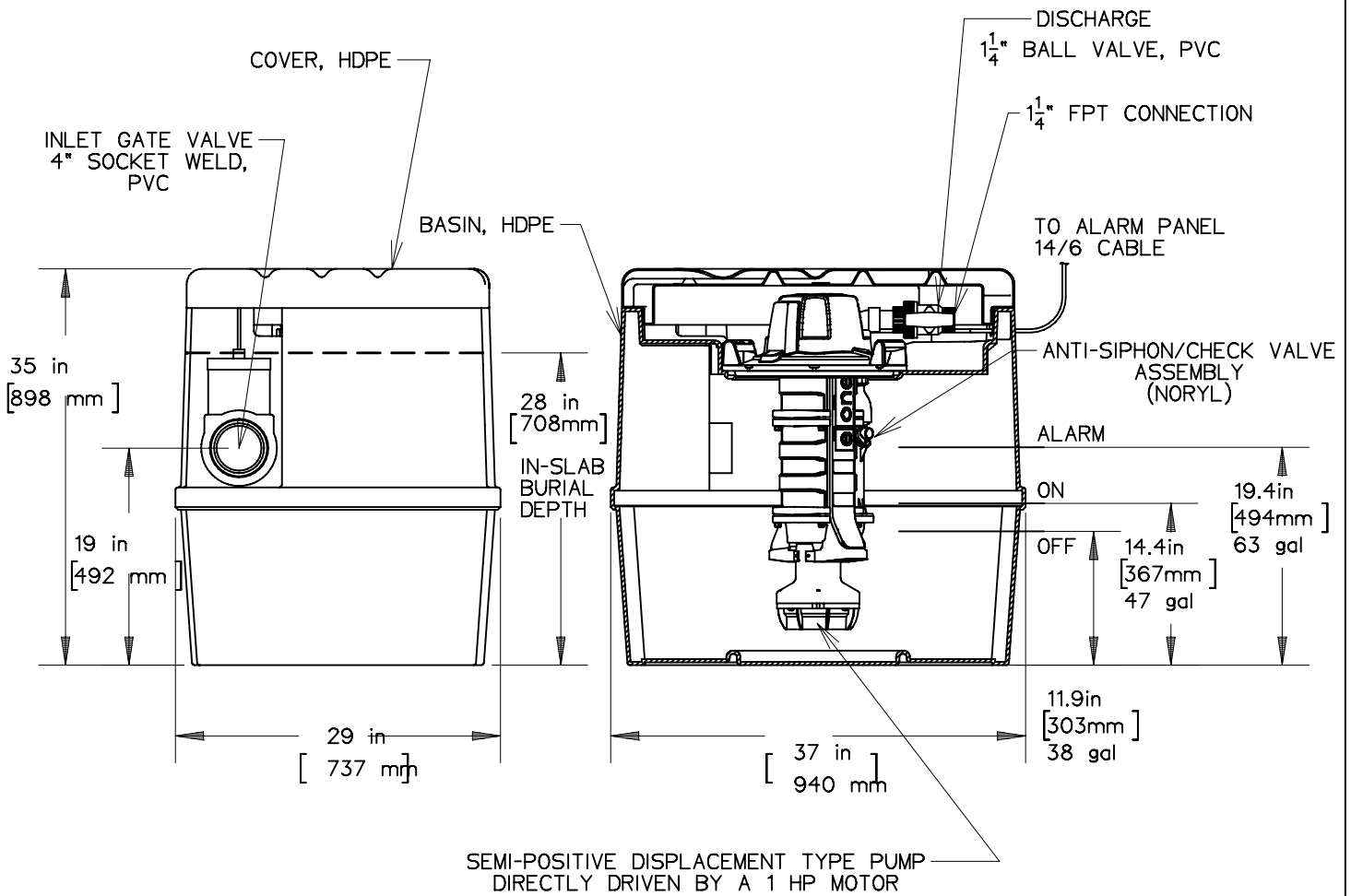
Accessories

E/One requires that the Uni-Lateral, E/One’s own stainless steel check valve, be installed between the grinder pump station and the street main for added protection against backflow.

Alarm panels are available with a variety of options, from basic monitoring to advanced notice of service requirements.

The Remote Sentry is ideal for installations where the alarm panel may be hidden from view.

IH091



BASIN CAPACITY = 91 GALLONS



SGS		4-26-07	-	1/16
DR BY	CHK'D	DATE	ISSUE	SCALE

e one
SEWER SYSTEMS

IH091 STATION, DETAIL SHEET

NA0056P02