

W-Series Fiberglass

General Features

W-Series fiberglass stations are available with one, two, three or four grinder pumps. Each station includes: the grinder pump(s), check valve, tank, controls, and alarm panel(s).

- Standard outdoor heights range from 60 inches to 144 inches
- Several tank diameters available; refer to the station drawings for specific sizes
- Flow ratings and tank capacities will vary with each tank size and number of grinder pumps; consult the factory for more information

The WH pump is the “hardwired,” or “wired,” model where a cable connects the motor controls to the level controls through watertight penetrations.

The WR pump is the “radio frequency identification” (RFID), or “wireless,” model that uses wireless technology to communicate between the level controls and the motor controls.

Operational Information

Motor

1 hp, 1,725 rpm, high torque, capacitor start, thermally protected, 120/240V, 60 Hz, 1 phase

Inlet Connections

4-inch and 6-inch EPDM grommets for DWV or DR35 pipe

Discharge Connections

Pump discharge terminates in 1.25-inch NPT female thread. Can easily be adapted to 1.25-inch PVC pipe or any other material required by local codes.

Discharge

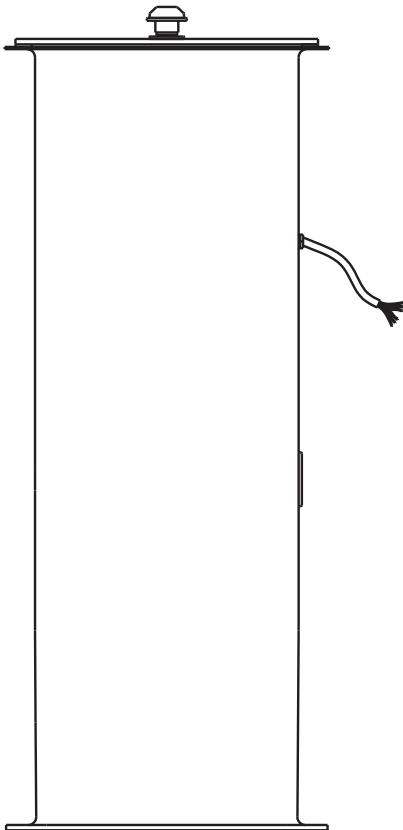
15 gpm at 0 psig (0.95 lps at 0 m)
11 gpm at 40 psig (0.69 lps at 28 m)
7.8 gpm at 80 psig (0.49 lps at 56 m)

Accessories

E/One requires that the Uni-Lateral, E/One’s own stainless steel check valve, be installed between the grinder pump station and the street main for added protection against backflow.

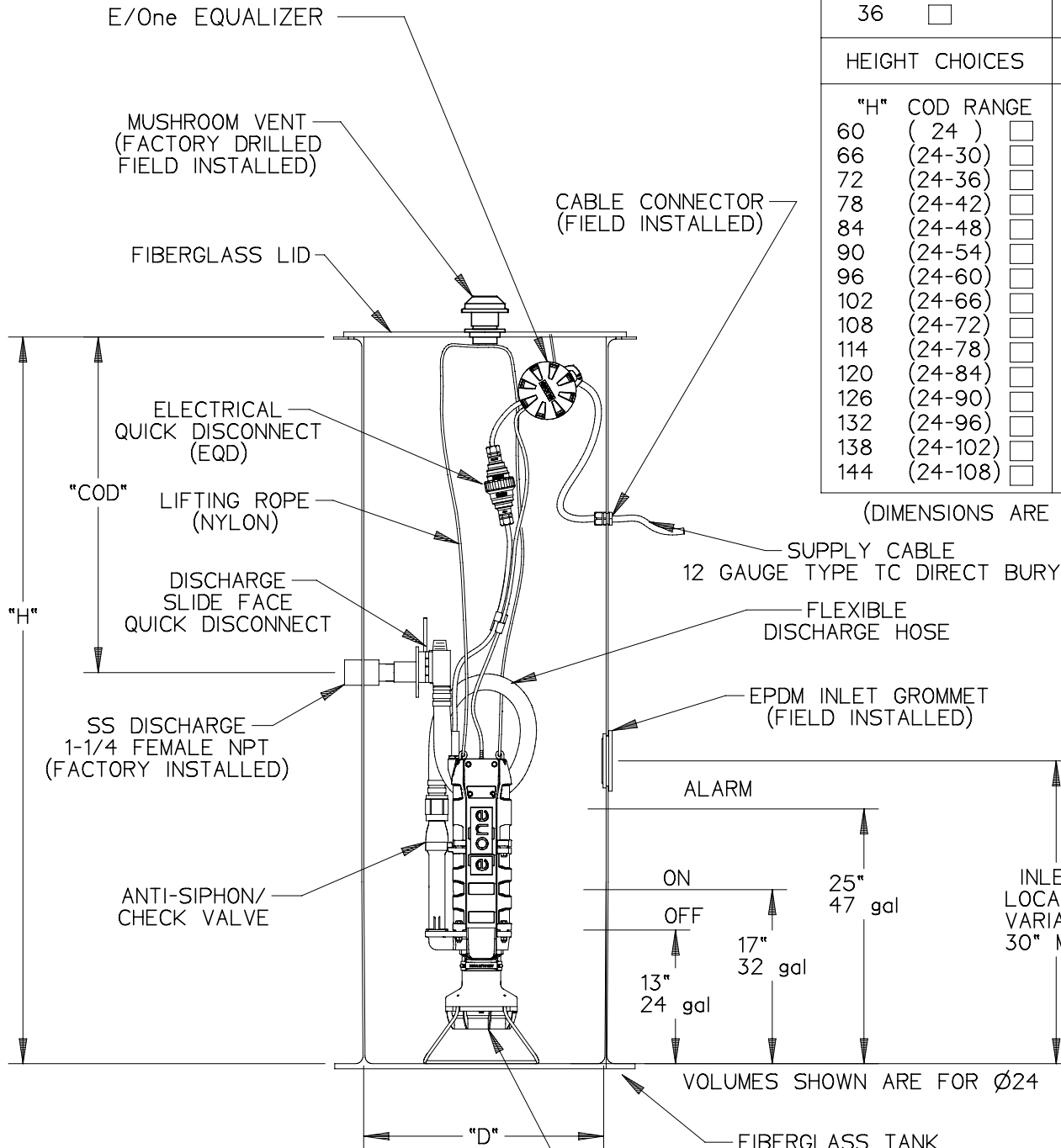
Alarm panels are available with a variety of options, from basic monitoring to advanced notice of service requirements.

The Remote Sentry is ideal for installations where the alarm panel may be hidden from view.



STATION TO BE USED WITH
(1) SENTRY SIMPLEX PANEL

DIAMETER CHOICES		W SERIES SIMPLEX STATIONS
"D"		
24	<input type="checkbox"/>	
30	<input type="checkbox"/>	
36	<input type="checkbox"/>	
HEIGHT CHOICES		COVER OVER DISCH CHOICES
"H"	COD RANGE	"COD"
60	(24)	24
66	(24-30)	30
72	(24-36)	36
78	(24-42)	42
84	(24-48)	48
90	(24-54)	54
96	(24-60)	60
102	(24-66)	66
108	(24-72)	72
114	(24-78)	78
120	(24-84)	84
126	(24-90)	90
132	(24-96)	96
138	(24-102)	102
144	(24-108)	108



(DIMENSIONS ARE IN INCHES)

SEMI-POSITIVE DISPLACEMENT TYPE PUMP
DIRECTLY DRIVEN BY 1 HP MOTOR

INLET CHOICES	
4" DWV PIPE (4.50 OD)	<input type="checkbox"/>
4" DR35 PIPE (4.22 OD)	<input type="checkbox"/>
6" DWV PIPE (6.63 OD)	<input type="checkbox"/>
6" DR35 PIPE (6.28 OD)	<input type="checkbox"/>

SGS		07-10-08	-	1/16
DR BY	CHK'D	DATE	ISSUE	SCALE

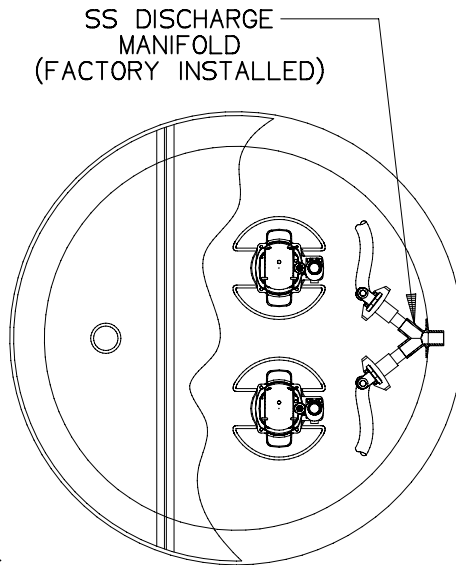


DETAIL SHEET,
W SERIES SIMPLEX

NA0157P01

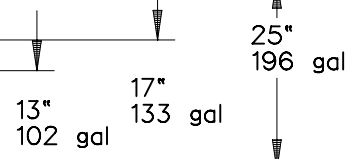
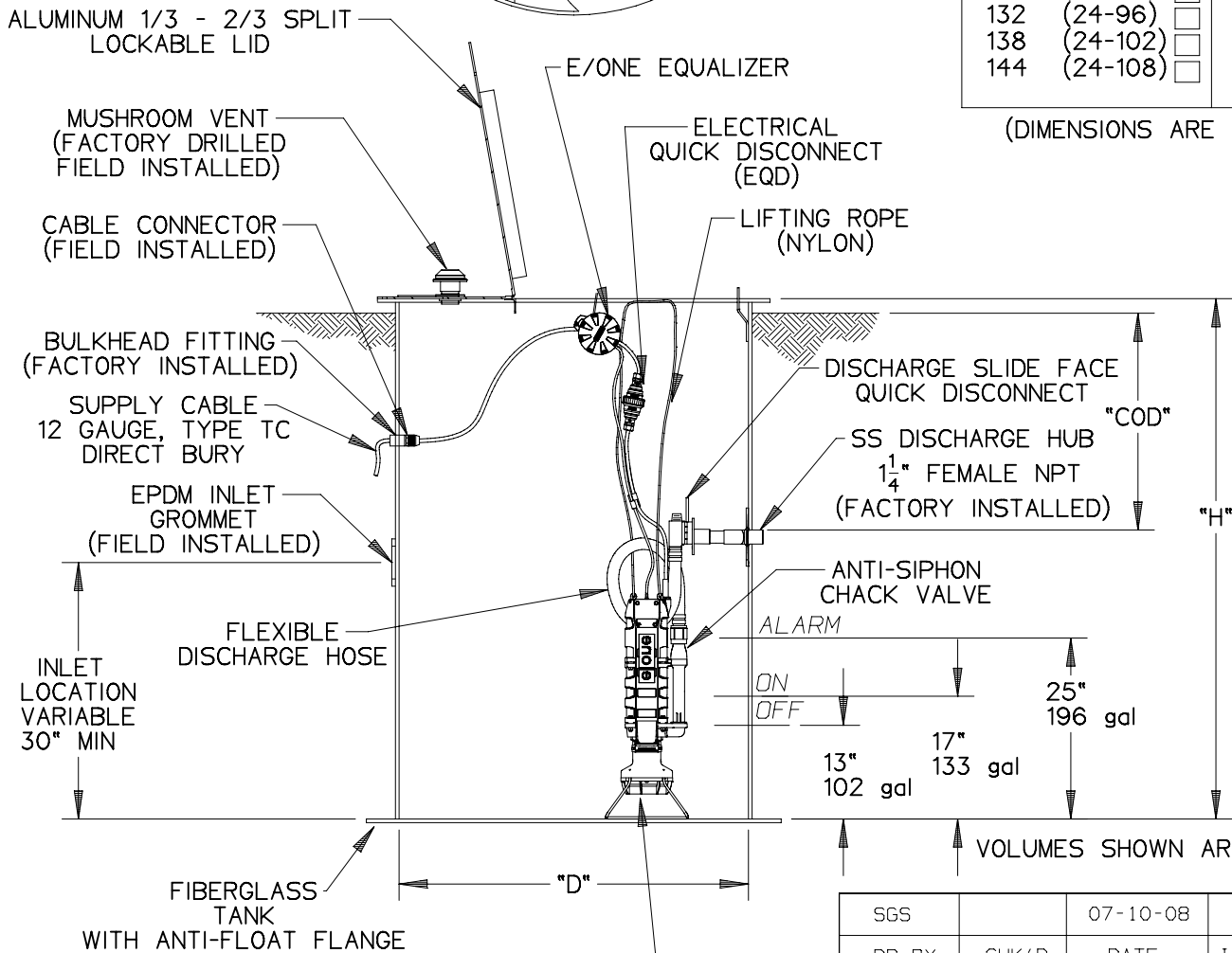


STATION TO BE USED WITH
(1) MOD T260 DUPLEX PANEL



DIAMETER CHOICES		W SERIES DUPLEX STATIONS	
"D"			
36	<input type="checkbox"/>		
42	<input type="checkbox"/>		
48	<input type="checkbox"/>		
60	<input type="checkbox"/>		
HEIGHT CHOICES		COVER OVER DISCH CHOICES	
"H"	COD RANGE	"COD"	
60	(24)	24	<input type="checkbox"/>
66	(24-30)	30	<input type="checkbox"/>
72	(24-36)	36	<input type="checkbox"/>
78	(24-42)	42	<input type="checkbox"/>
84	(24-48)	48	<input type="checkbox"/>
90	(24-54)	54	<input type="checkbox"/>
96	(24-60)	60	<input type="checkbox"/>
102	(24-66)	66	<input type="checkbox"/>
108	(24-72)	72	<input type="checkbox"/>
114	(24-78)	78	<input type="checkbox"/>
120	(24-84)	84	<input type="checkbox"/>
126	(24-90)	90	<input type="checkbox"/>
132	(24-96)	96	<input type="checkbox"/>
138	(24-102)	102	<input type="checkbox"/>
144	(24-108)	108	<input type="checkbox"/>

(DIMENSIONS ARE IN INCHES)



VOLUMES SHOWN ARE FOR Ø48"

SEMI-POSITIVE DISPLACEMENT TYPE PUMP
DIRECTLY DRIVEN BY 1 HP MOTOR

INLET CHOICES	
4" DWV PIPE (4.50 OD)	<input type="checkbox"/>
4" DR35 PIPE (4.22 OD)	<input type="checkbox"/>
6" DWV PIPE (6.63 OD)	<input type="checkbox"/>
6" DR35 PIPE (6.28 OD)	<input type="checkbox"/>



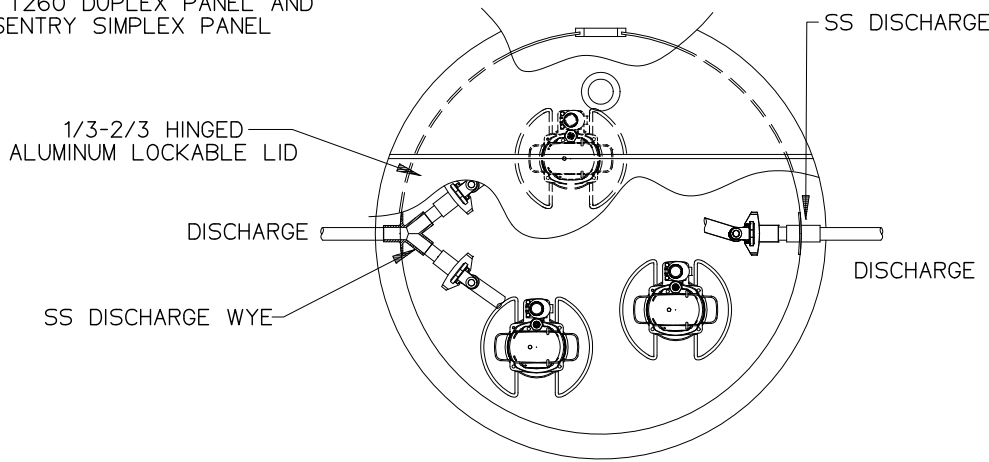
SGS		07-10-08	-	1/32
DR BY	CHK'D	DATE	ISSUE	SCALE



DETAIL SHEET,
W SERIES DUPLEX

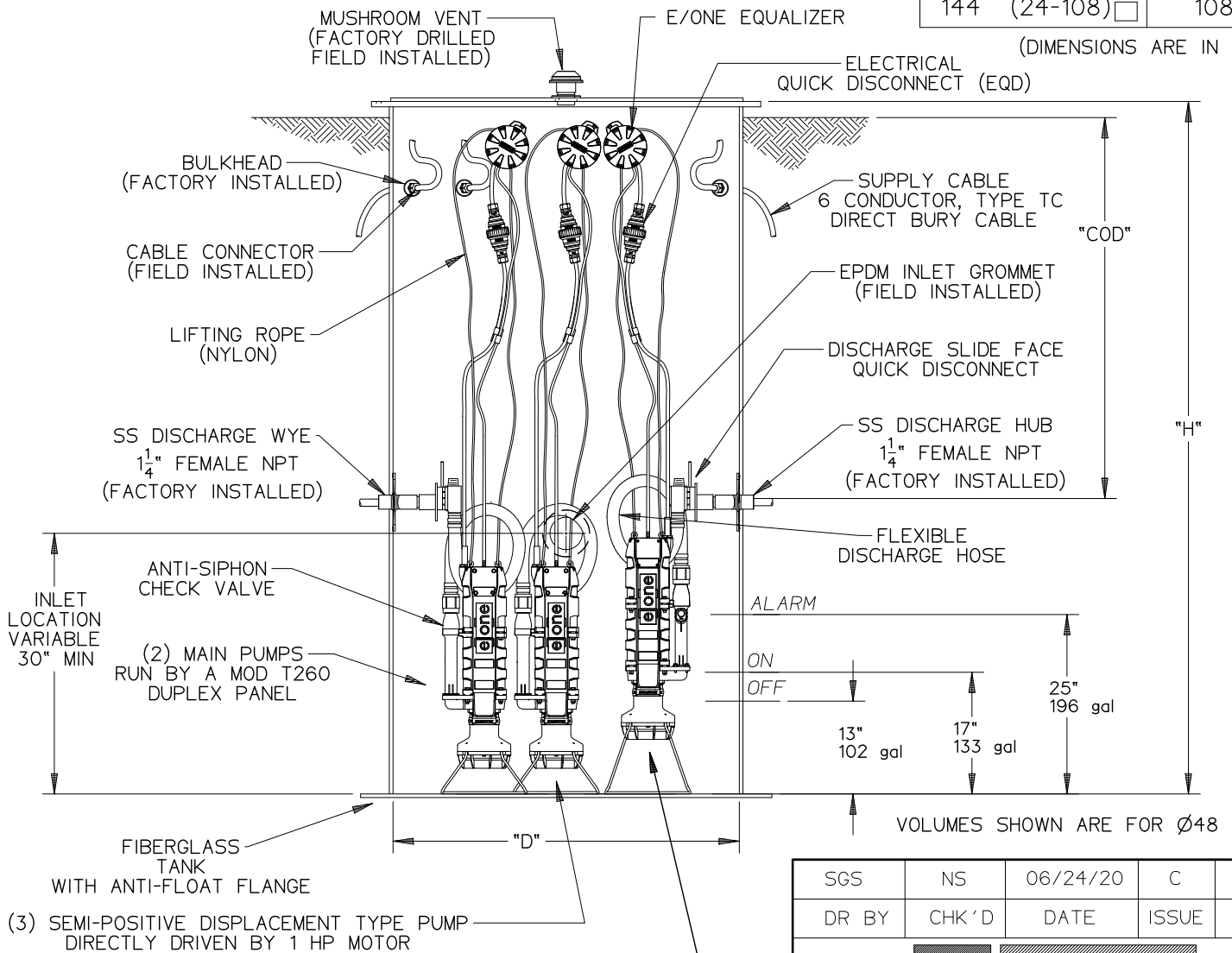
NA0156P01

- STATION TO BE USED WITH
 (1) MOD T260 DUPLEX PANEL AND
 (1) SENTRY SIMPLEX PANEL



DIAMETER CHOICES		W SERIES TRIPLEX STATIONS
"D"		
48	<input type="checkbox"/>	
60	<input type="checkbox"/>	
HEIGHT CHOICES		COVER OVER DISCH CHOICES
"H"	COD RANGE	"COD"
60	(24)	24
66	(24-30)	30
72	(24-36)	36
78	(24-42)	42
84	(24-48)	48
90	(24-54)	54
96	(24-60)	60
102	(24-66)	66
108	(24-72)	72
114	(24-78)	78
120	(24-84)	84
126	(24-90)	90
132	(24-96)	96
138	(24-102)	102
144	(24-108)	108

(DIMENSIONS ARE IN INCHES)



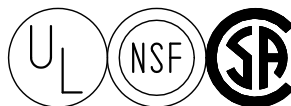
VOLUMES SHOWN ARE FOR Ø48

- (3) SEMI-POSITIVE DISPLACEMENT TYPE PUMP DIRECTLY DRIVEN BY 1 HP MOTOR

TALL STAND IS TO BE USED ON ONE THE PUMP CONNECTED TO THE SIMPLEX PANEL

TO BE ORDERED SEPERATELY
 NB0006P04 QTY 2 REQ.

INLET CHOICES	
4" DWV PIPE (4.50 OD)	<input type="checkbox"/>
4" DR35 PIPE (4.22 OD)	<input type="checkbox"/>
6" DWV PIPE (6.63 OD)	<input type="checkbox"/>
6" DR35 PIPE (6.28 OD)	<input type="checkbox"/>



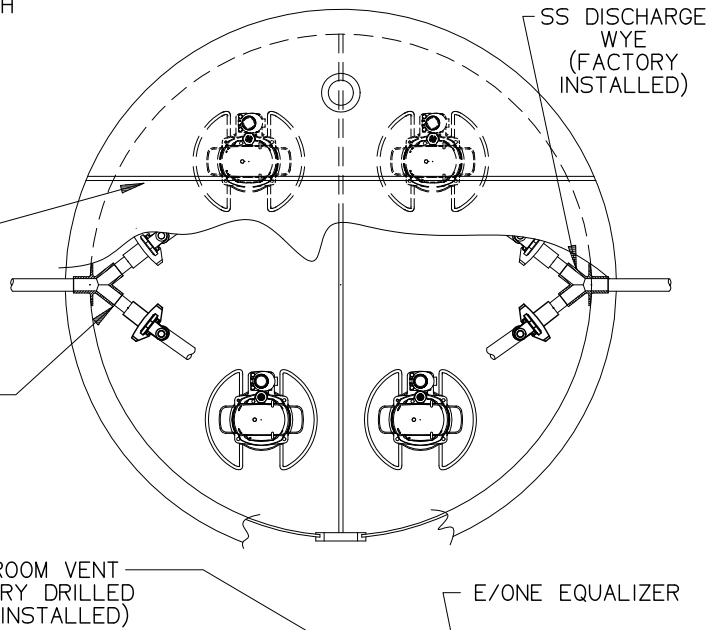
SGS	NS	06/24/20	C	1/32
DR BY	CHK'D	DATE	ISSUE	SCALE



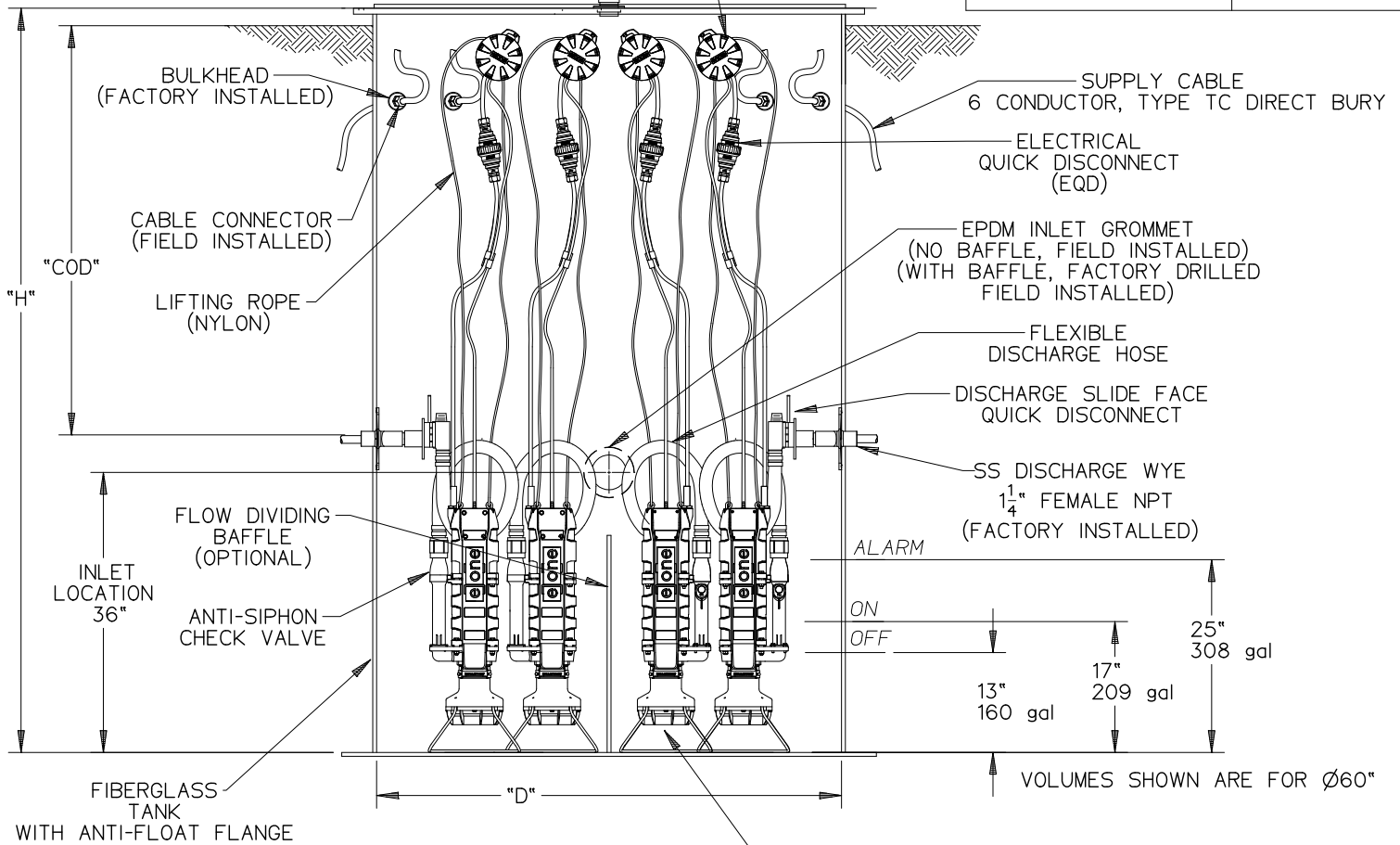
DETAIL SHEET
 W SERIES TRIPLEX

NA0155P01

STATION TO BE USED WITH AN E/ONE QUAD PANEL, QUAD PROTECT PLUS OR QUAD T260



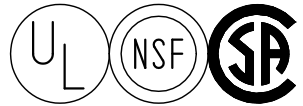
DIAMETER CHOICES		W SERIES QUADPLEX STATIONS	
"D"			
48	<input type="checkbox"/>		
60	<input type="checkbox"/>		
72	<input type="checkbox"/>		
HEIGHT CHOICES		COVER OVER DISCH CHOICES	
"H"	COD RANGE	"COD"	
60	(24)	24	<input type="checkbox"/>
66	(24-30)	30	<input type="checkbox"/>
72	(24-36)	36	<input type="checkbox"/>
78	(24-42)	42	<input type="checkbox"/>
84	(24-48)	48	<input type="checkbox"/>
90	(24-54)	54	<input type="checkbox"/>
96	(24-60)	60	<input type="checkbox"/>
102	(24-66)	66	<input type="checkbox"/>
108	(24-72)	72	<input type="checkbox"/>
114	(24-78)	78	<input type="checkbox"/>
120	(24-84)	84	<input type="checkbox"/>
126	(24-90)	90	<input type="checkbox"/>
132	(24-96)	96	<input type="checkbox"/>
138	(24-102)	102	<input type="checkbox"/>
144	(24-108)	108	<input type="checkbox"/>



FOUR SEMI-POSITIVE DISPLACEMENT TYPE PUMP DIRECTLY DRIVEN BY 1 HP MOTOR

NOTE:
 - 4" & 6" INLETS ARE EPDM GROMMETS
 - 8" DWV INLET IS A CAST IRON CAULKING HUB
 - 8" DR35 INLET IS A CAST IRON CAULKING HUB AND A FERNCO FITTING

INLET CHOICES	
4" DWV PIPE (4.50 OD)	<input type="checkbox"/>
4" DR35 PIPE (4.22 OD)	<input type="checkbox"/>
6" DWV PIPE (6.63 OD)	<input type="checkbox"/>
6" DR35 PIPE (6.28 OD)	<input type="checkbox"/>
8" DWV PIPE (8.63 OD)	<input type="checkbox"/>
8" DR35 PIPE (8.40 OD)	<input type="checkbox"/>

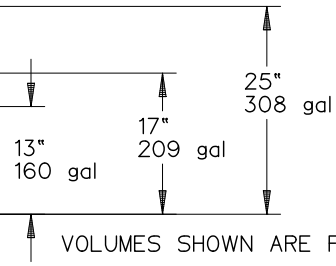


SGS		12/06/17	B	1/32
DR BY	CHK'D	DATE	ISSUE	SCALE



DETAIL SHEET
W SERIES QUADPLEX

NA0154P01



STATION TO BE USED WITH
(1) SENTRY SIMPLEX PANEL

DIAMETER CHOICES

"D"

.610

.762

.914

W SERIES
SIMPLEX
STATIONS

HEIGHT CHOICES

"H" COD RANGE

1.52 (.61)

1.68 (.61-.76)

1.83 (.61-.91)

1.98 (.61-1.07)

2.13 (.61-1.22)

2.29 (.61-1.37)

2.44 (.61-1.52)

2.59 (.61-1.68)

2.74 (.61-1.83)

2.90 (.61-1.98)

3.05 (.61-2.13)

3.20 (.61-2.29)

3.35 (.61-2.44)

3.51 (.61-2.59)

3.66 (.61-2.74)

COVER OVER
DISCH CHOICES

"COD"

0.61

0.76

0.91

1.07

1.22

1.37

1.52

1.68

1.83

1.98

2.13

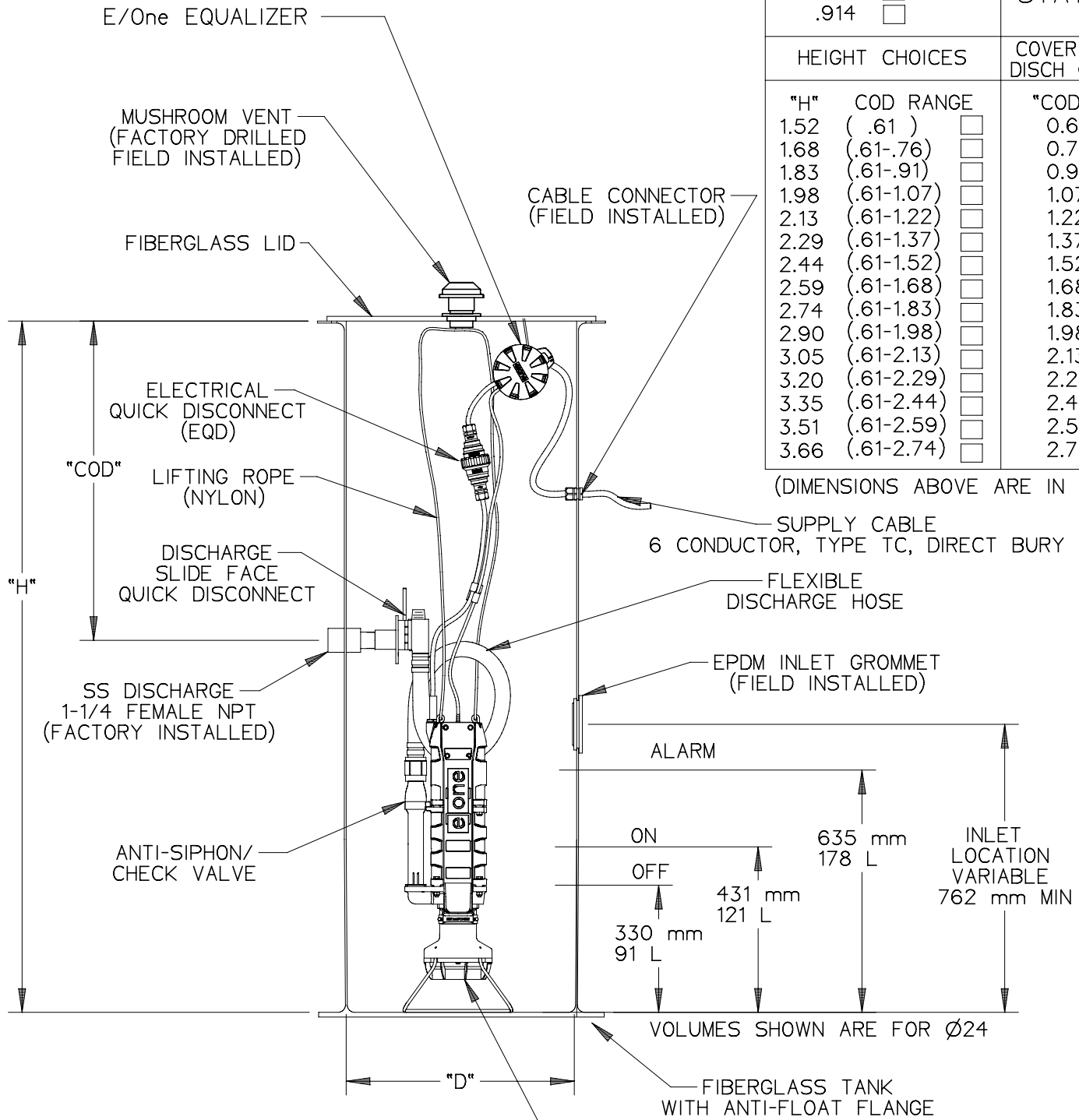
2.29

2.44

2.59

2.74

(DIMENSIONS ABOVE ARE IN METERS)



SEMI-POSITIVE DISPLACEMENT TYPE PUMP
DIRECTLY DRIVEN BY 1 HP MOTOR

INLET CHOICES

- 4" DWV PIPE (4.50 OD)
- 4" DR35 PIPE (4.22 OD)
- 6" DWV PIPE (6.63 OD)
- 6" DR35 PIPE (6.28 OD)

PJS		12-09-10	-	1/16
DR BY	CHK'D	DATE	ISSUE	SCALE

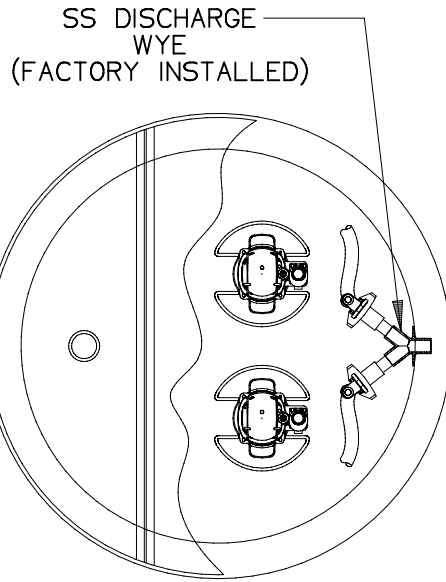


DETAIL SHEET,
W SERIES SIMPLEX, METRIC

NA0157P02



STATION TO BE USED WITH
(1) MOD T260 DUPLEX PANEL



DIAMETER CHOICES		W SERIES DUPLEX STATIONS
"D"		
0.91	<input type="checkbox"/>	
1.07	<input type="checkbox"/>	
1.22	<input type="checkbox"/>	
1.52	<input type="checkbox"/>	

HEIGHT CHOICES		COVER OVER DISCH CHOICES
"H"	COD RANGE	
1.52	(.61)	0.61 <input type="checkbox"/>
1.68	(.61-.76)	0.76 <input type="checkbox"/>
1.83	(.61-.91)	0.91 <input type="checkbox"/>
1.98	(.61-1.07)	1.07 <input type="checkbox"/>
2.13	(.61-1.22)	1.22 <input type="checkbox"/>
2.29	(.61-1.37)	1.37 <input type="checkbox"/>
2.44	(.61-1.52)	1.52 <input type="checkbox"/>
2.59	(.61-1.68)	1.68 <input type="checkbox"/>
2.74	(.61-1.83)	1.83 <input type="checkbox"/>
2.90	(.61-1.98)	1.98 <input type="checkbox"/>
3.05	(.61-2.13)	2.13 <input type="checkbox"/>
3.20	(.61-2.29)	2.29 <input type="checkbox"/>
3.35	(.61-2.44)	2.44 <input type="checkbox"/>
3.51	(.61-2.59)	2.59 <input type="checkbox"/>
3.66	(.61-2.74)	2.74 <input type="checkbox"/>

ALUMINUM 1/3 - 2/3 SPLIT
LOCKABLE LID

MUSHROOM VENT
(FACTORY DRILLED
FIELD INSTALLED)

CABLE CONNECTOR
(FIELD INSTALLED)

BULKHEAD FITTING
(FACTORY INSTALLED)

SUPPLY CABLE
6 CONDUCTOR, TYPE TC
DIRECT BURY

EPDM INLET
GROMMET
(FIELD INSTALLED)

INLET
LOCATION
VARIABLE
762 mm MIN

FLEXIBLE
DISCHARGE HOSE

FIBERGLASS
TANK
WITH ANTI-FLOAT FLANGE

SEMI-POSITIVE DISPLACEMENT TYPE PUMP
DIRECTLY DRIVEN BY 1 HP MOTOR

E/O/E EQUALIZER

ELECTRICAL
QUICK DISCONNECT
(EQD)

LIFTING ROPE
(NYLON)

DISCHARGE SLIDE FACE
QUICK DISCONNECT

SS DISCHARGE WYE
1 1/4" FEMALE NPT
(FACTORY INSTALLED)

ANTI-SIPHON
CHECK VALVE

ALARM

ON
OFF

330 mm
386 L

431 mm
504 L

635 mm
742 L

VOLUMES SHOWN ARE FOR Ø48"

(DIMENSIONS ABOVE ARE IN METERS)

INLET CHOICES	
4" DWV PIPE (4.50 OD)	<input type="checkbox"/>
4" DR35 PIPE (4.22 OD)	<input type="checkbox"/>
6" DWV PIPE (6.63 OD)	<input type="checkbox"/>
6" DR35 PIPE (6.28 OD)	<input type="checkbox"/>



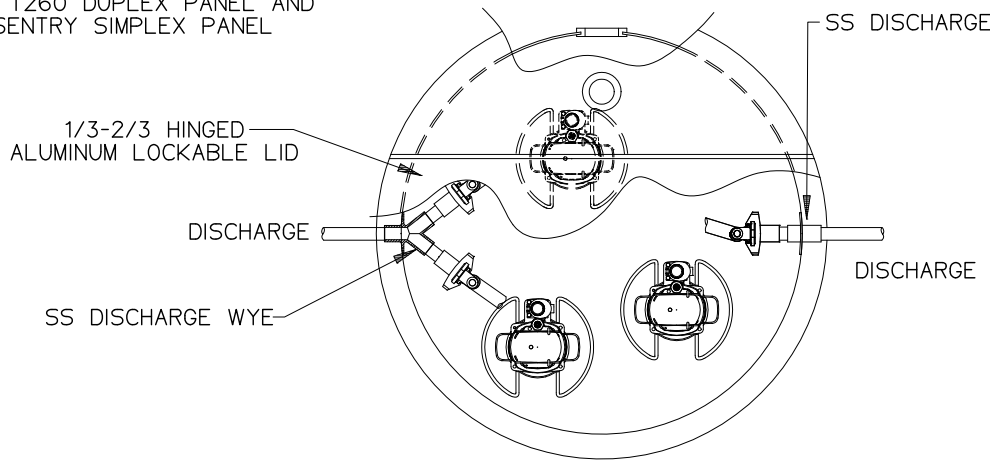
PJS		12-09-10	-	1/32
DR BY	CHK'D	DATE	ISSUE	SCALE



DETAIL SHEET,
W SERIES DUPLEX, METRIC

NA0156P02

STATION TO BE USED WITH
 (1) MOD T260 DUPLEX PANEL AND
 (1) SENTRY SIMPLEX PANEL



DIAMETER CHOICES

- "D"
 1.22
 1.52

W SERIES
 TRIPLEX
 STATIONS

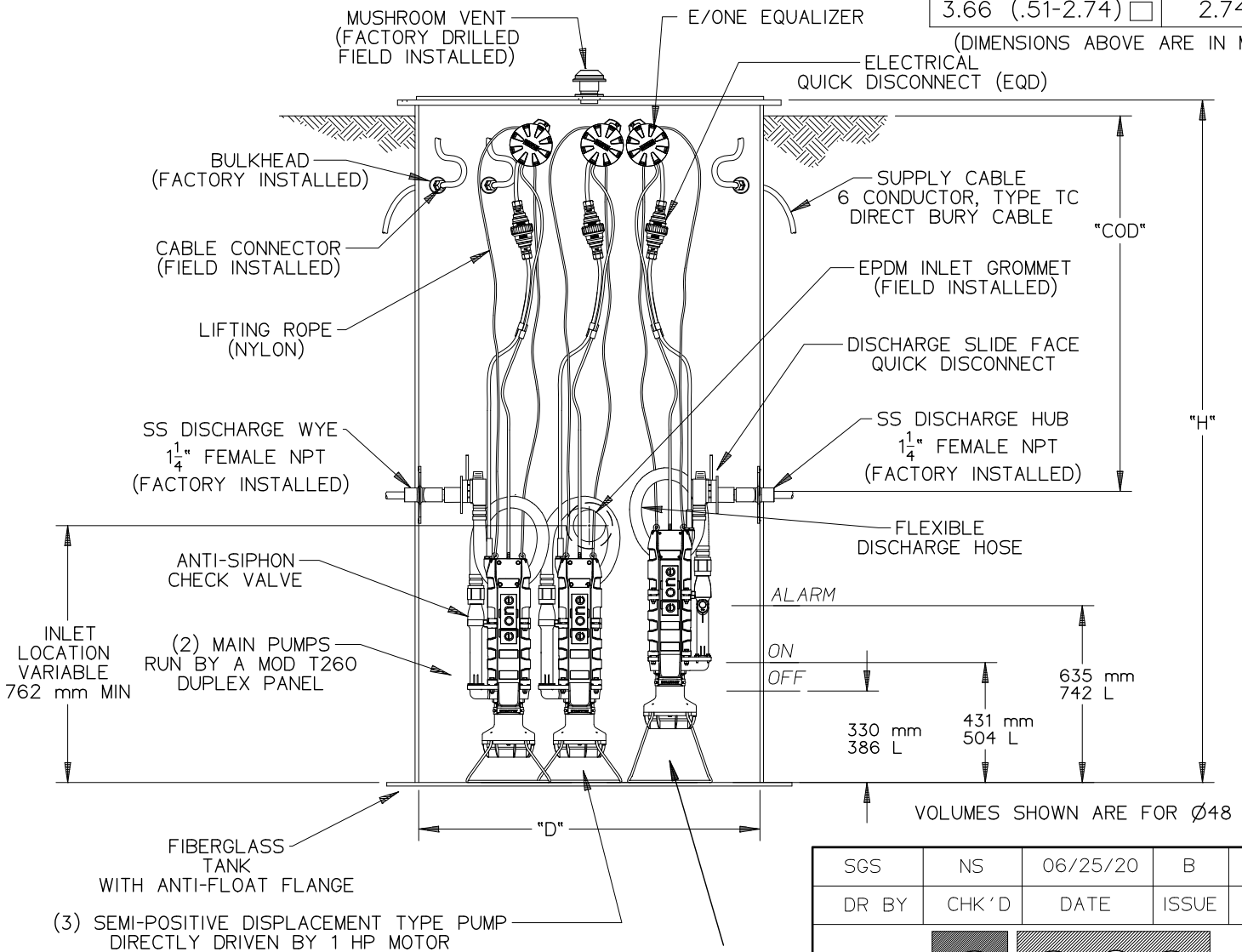
HEIGHT CHOICES

- | "H" | COD RANGE | |
|------|------------|--------------------------|
| 1.52 | (.61) | <input type="checkbox"/> |
| 1.68 | (.61-.76) | <input type="checkbox"/> |
| 1.83 | (.61-.91) | <input type="checkbox"/> |
| 1.98 | (.61-1.07) | <input type="checkbox"/> |
| 2.13 | (.61-1.22) | <input type="checkbox"/> |
| 2.29 | (.61-1.37) | <input type="checkbox"/> |
| 2.44 | (.61-1.52) | <input type="checkbox"/> |
| 2.59 | (.61-1.68) | <input type="checkbox"/> |
| 2.74 | (.61-1.83) | <input type="checkbox"/> |
| 2.90 | (.61-1.98) | <input type="checkbox"/> |
| 3.05 | (.61-2.13) | <input type="checkbox"/> |
| 3.20 | (.61-2.29) | <input type="checkbox"/> |
| 3.35 | (.61-2.44) | <input type="checkbox"/> |
| 3.51 | (.61-2.59) | <input type="checkbox"/> |
| 3.66 | (.51-2.74) | <input type="checkbox"/> |

COVER OVER
 DISCH CHOICES

- | "COD" | |
|-------|--------------------------|
| 0.61 | <input type="checkbox"/> |
| 0.76 | <input type="checkbox"/> |
| 0.91 | <input type="checkbox"/> |
| 1.07 | <input type="checkbox"/> |
| 1.22 | <input type="checkbox"/> |
| 1.37 | <input type="checkbox"/> |
| 1.52 | <input type="checkbox"/> |
| 1.68 | <input type="checkbox"/> |
| 1.83 | <input type="checkbox"/> |
| 1.98 | <input type="checkbox"/> |
| 2.13 | <input type="checkbox"/> |
| 2.29 | <input type="checkbox"/> |
| 2.44 | <input type="checkbox"/> |
| 2.59 | <input type="checkbox"/> |
| 2.74 | <input type="checkbox"/> |

(DIMENSIONS ABOVE ARE IN METERS)



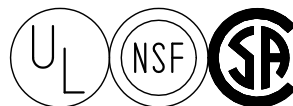
VOLUMES SHOWN ARE FOR Ø48

TALL STAND IS TO BE USED ON ONE THE PUMP CONNECTED TO THE SIMPLEX PANEL

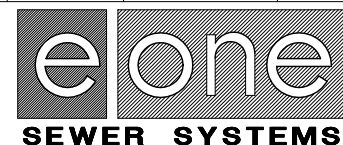
TO BE ORDERED SEPARATELY
 NB0006P04 QTY 2 REQ.

INLET CHOICES

- | | |
|------------------------|--------------------------|
| 4" DWV PIPE (4.50 OD) | <input type="checkbox"/> |
| 4" DR35 PIPE (4.22 OD) | <input type="checkbox"/> |
| 6" DWV PIPE (6.63 OD) | <input type="checkbox"/> |
| 6" DR35 PIPE (6.28 OD) | <input type="checkbox"/> |



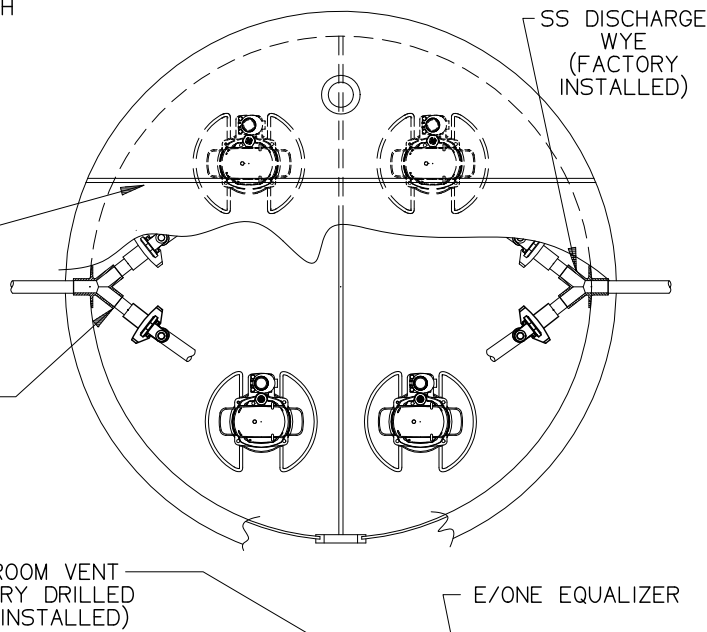
SGS	NS	06/25/20	B	1/32
DR BY	CHK'D	DATE	ISSUE	SCALE



DETAIL SHEET
 W SERIES TRIPLEX, METRIC

NA0155P02

STATION TO BE USED WITH AN E/ONE QUAD PANEL, QUAD PROTECT PLUS OR QUAD T260



DIAMETER CHOICES

- "D"
 1.22
 1.52
 1.83

W SERIES QUADPLEX STATIONS

HEIGHT CHOICES

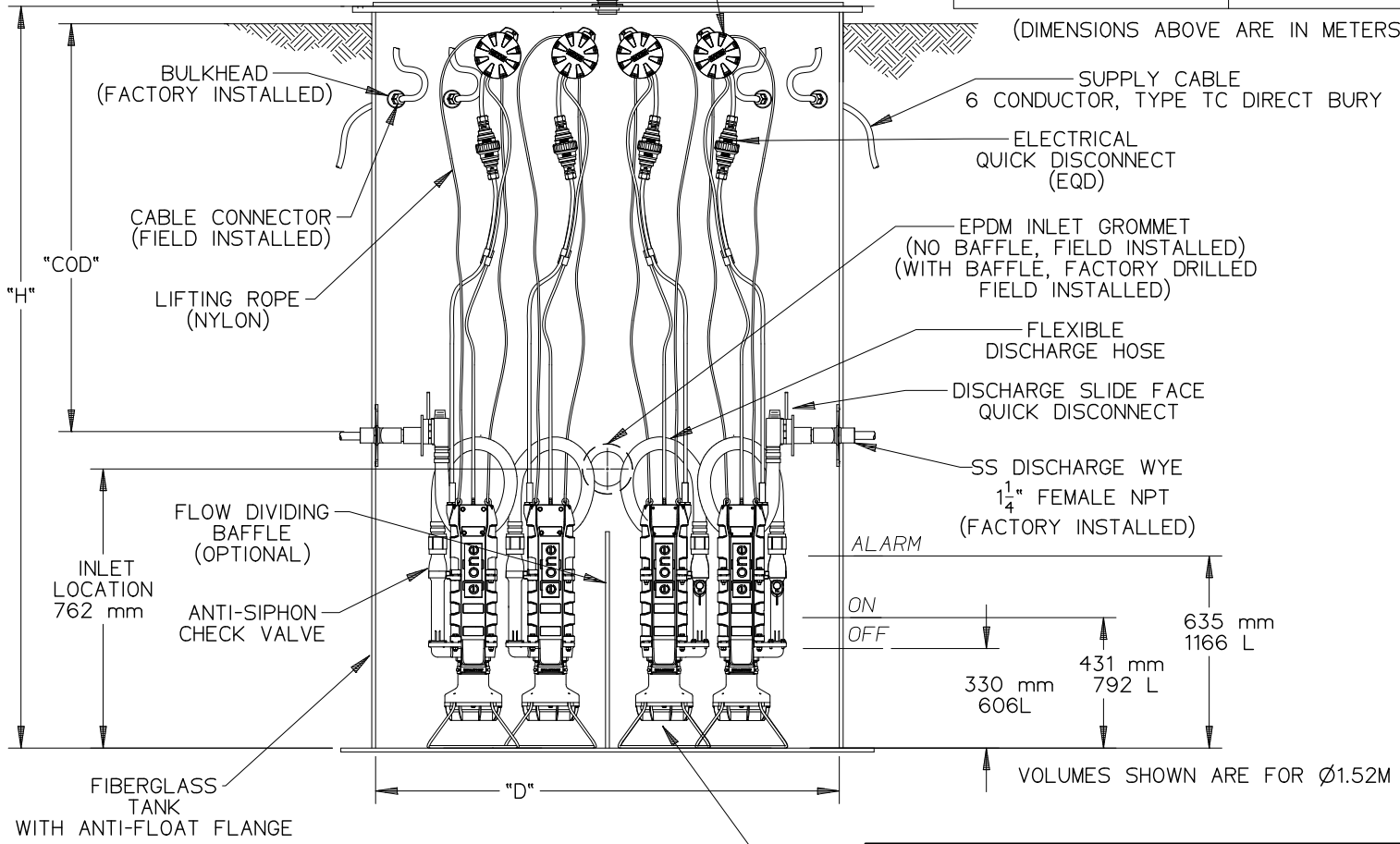
"H" COD RANGE

- 1.52 (.61)
 1.68 (.61-.76)
 1.83 (.61-.91)
 1.98 (.61-1.07)
 2.13 (.61-1.22)
 2.29 (.61-1.37)
 2.44 (.61-1.52)
 2.59 (.61-1.68)
 2.74 (.61-1.83)
 2.90 (.61-1.98)
 3.05 (.61-2.13)
 3.20 (.61-2.29)
 3.35 (.61-2.44)
 3.51 (.61-2.59)
 3.66 (.61-2.74)

COVER OVER DISCH CHOICES

- "COD"
 0.61
 0.76
 0.91
 1.07
 1.22
 1.37
 1.52
 1.68
 1.83
 1.98
 2.13
 2.29
 2.44
 2.59
 2.74

(DIMENSIONS ABOVE ARE IN METERS)

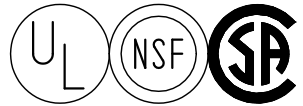


FOUR SEMI-POSITIVE DISPLACEMENT TYPE PUMP DIRECTLY DRIVEN BY 1 HP MOTOR

NOTE:
 - 4" & 6" INLETS ARE EPDM GROMMETS
 - 8" DWV INLET IS A CAST IRON CAULKING HUB
 - 8" DR35 INLET IS A CAST IRON CAULKING HUB AND A FERNCO FITTING

INLET CHOICES

- 4" DWV PIPE (4.50 OD)
 4" DR35 PIPE (4.22 OD)
 6" DWV PIPE (6.63 OD)
 6" DR35 PIPE (6.28 OD)
 8" DWV PIPE (8.63 OD)
 8" DR35 PIPE (8.40 OD)

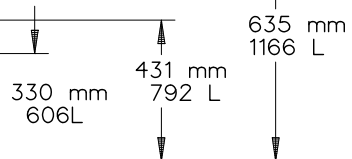


PJS		12/06/17	A	1/32
DR BY	CHK'D	DATE	ISSUE	SCALE



DETAIL SHEET
 W SERIES QUADPLEX, METRIC

NA0154P02



VOLUMES SHOWN ARE FOR Ø1.52M