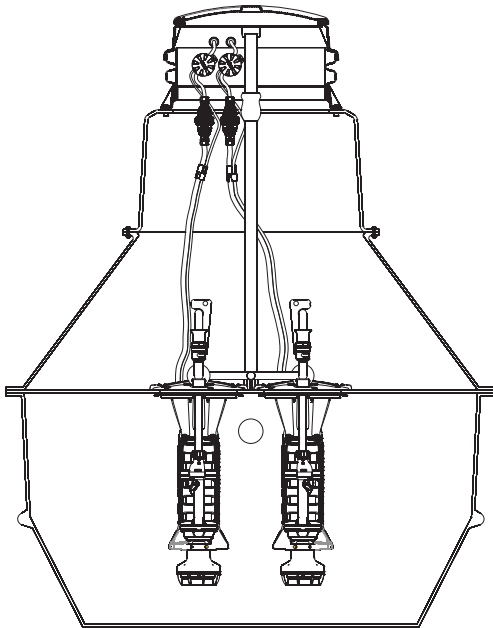


## DH502/DR502



### General Features

The DH502 or DR502 grinder pump station is a complete unit that includes: two grinder pumps with check valves, FRP (Fiberglass Reinforced Polyester) tank and controls. The DH502 or DR502 is packaged into a single complete unit, ready for installation.

The DH502 is the “hardwired,” or “wired,” model where a cable connects the motor controls to the level controls through watertight penetrations.

The DR502 is the “radio frequency identification” (RFID), or “wireless,” model that uses wireless technology to communicate between the level controls and the motor controls.

All solids are ground into fine particles, allowing them to pass easily through the pump, check valve and small-diameter pipelines. Even objects not normally found in sewage, such as plastic, rubber, fiber, wood, etc., are ground into fine particles.

The 1 1/4-inch discharge connection is adaptable to any piping materials, thereby allowing it to meet local code requirements.

The tank is made of tough corrosion-resistant fiberglass reinforced polyester. The optimum tank capacity of 500 gallons (1893 liters) is based on computer studies of water usage patterns. A single DH502 or DR502 is ideal for up to nine average, single-family homes, and can also be used for up to 24 average, single-family homes with the consent of the factory. This model can accommodate flows of 6000 GPD (22,714 lpd).

The internal check valve assembly, located in each grinder pump, is

custom-designed for non-clog, trouble-free operation.

The grinder pump is automatically activated and runs infrequently for very short periods. The annual energy consumption is typically that of a 40-watt light bulb.

Units are available for indoor and outdoor installations. Outdoor units are designed to accommodate a wide range of burial depths.

### Operational Information

#### Motor

1 hp, 1,725 rpm, high torque, capacitor start, thermally protected, 120/240V, 60 Hz, 1 phase

#### Inlet Connections

4-inch inlet grommet standard for DWV pipe. Other inlet configurations available from the factory.

#### Discharge Connections

Pump discharge terminates in 1 1/4-inch NPT female thread. Can easily be adapted to 1 1/4-inch PVC pipe or any other material required by local codes.

#### Discharge\*

15 gpm at 0 psig (.75 lps at 0 m TDH)

11 gpm at 40 psig (.63 lps at 20 m TDH)

7.8 gpm at 80 psig (.47 lps at 42 m TDH)

#### Control Panel

This station is designed to use the Alternating Control Panel, MOD T260.

### Overload Capacity

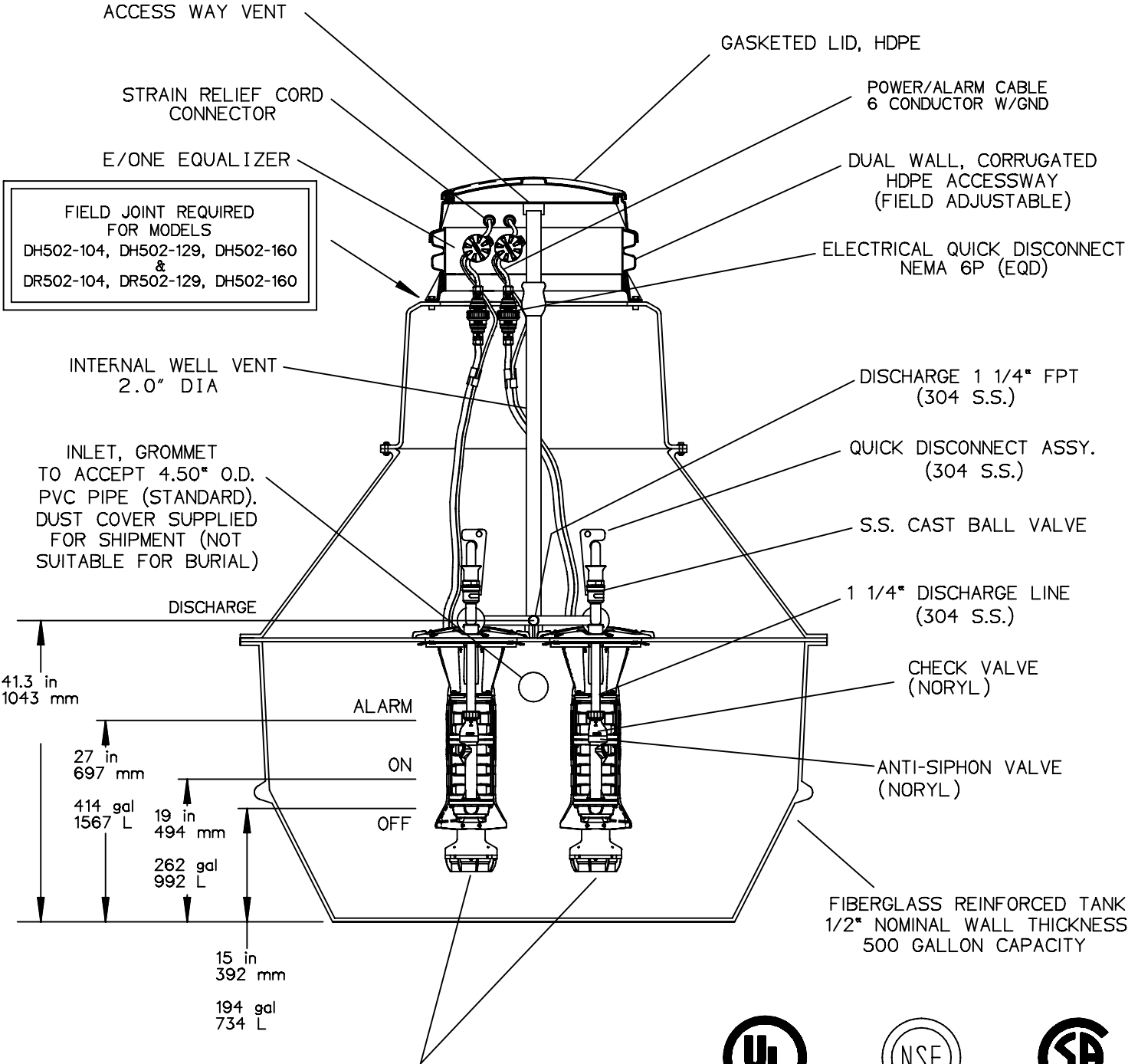
The maximum pressure that the pump can generate is limited by the motor characteristics. The motor generates a pressure well below the rating of the piping and appurtenances. The automatic reset feature does not require manual operation following overload.

Patent Numbers: 5,752,315  
5,562,254 5,439,180

\* Discharge data includes loss through check valve, which is minimal.

NA0054P01 Rev B

**OPTIONS :**  **DH502** (HARD WIRED LEVEL CONTROLS)  
 **DR502** (WIRELESS LEVEL CONTROLS)



SEMI-POSITIVE DISPLACEMENT TYPE PUMP.  
EACH DIRECTLY DRIVEN BY A 1 HP MOTOR

CONCRETE BALLAST MAY BE REQUIRED  
SEE INSTALLATION INSTRUCTIONS  
FOR DETAILS



AD	CH	10/20/10	C	
DR BY	CHK'D	DATE	ISSUE	SCALE

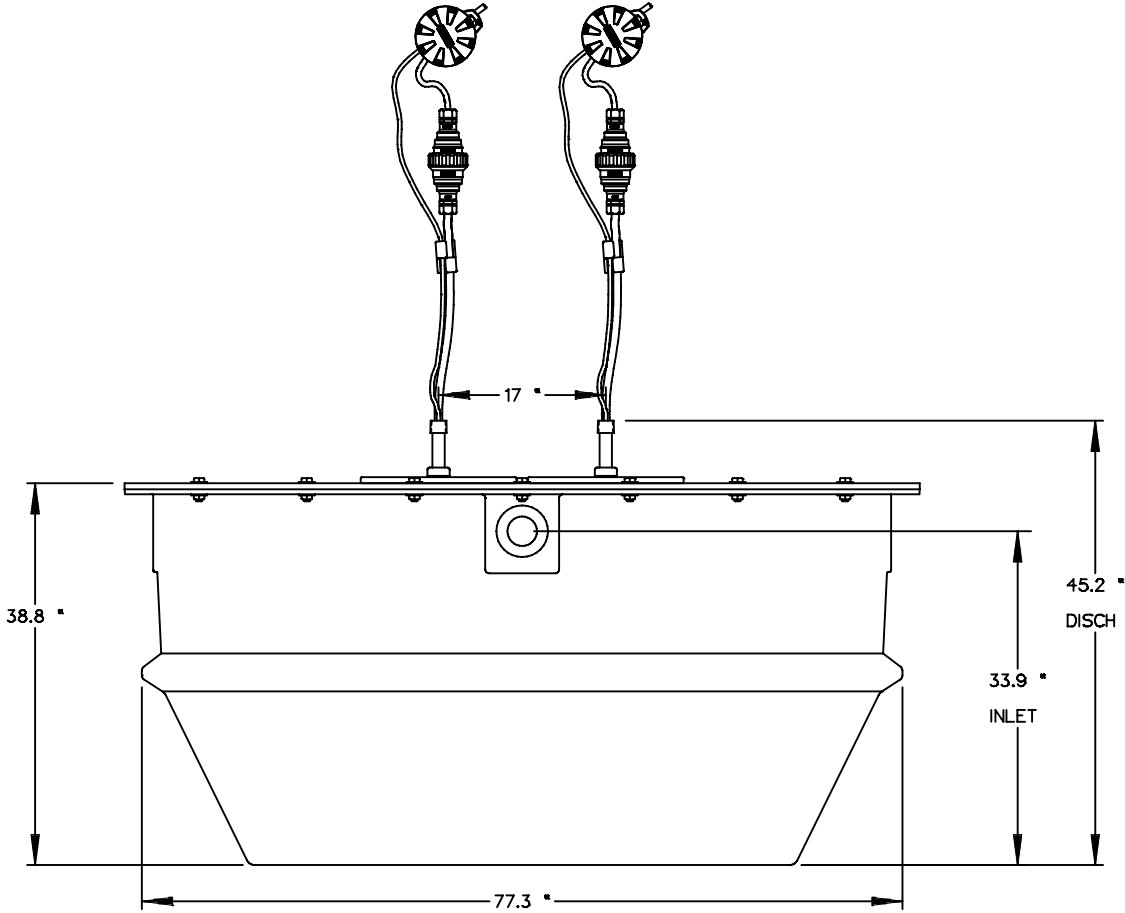


MODEL DH502 / DR502  
DETAIL SHEET

NA0054P02

# DH502-39

## INDOOR UNIT



DISCHARGE: 1-1/4 MALE  
PIPE THREAD

INLET: EPDM GROMMET FOR  
4" DWV PIPE (STANDARD)



LNT	GAE	04/24/07	-	
DR BY	CHK'D	DATE	ISSUE	SCALE



MODEL DH502-39

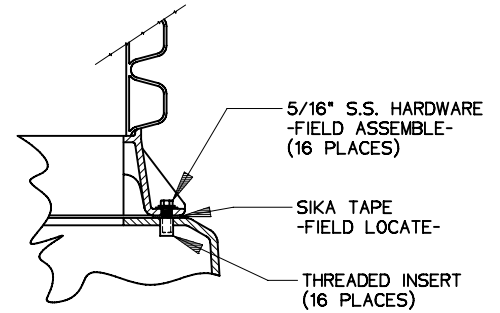
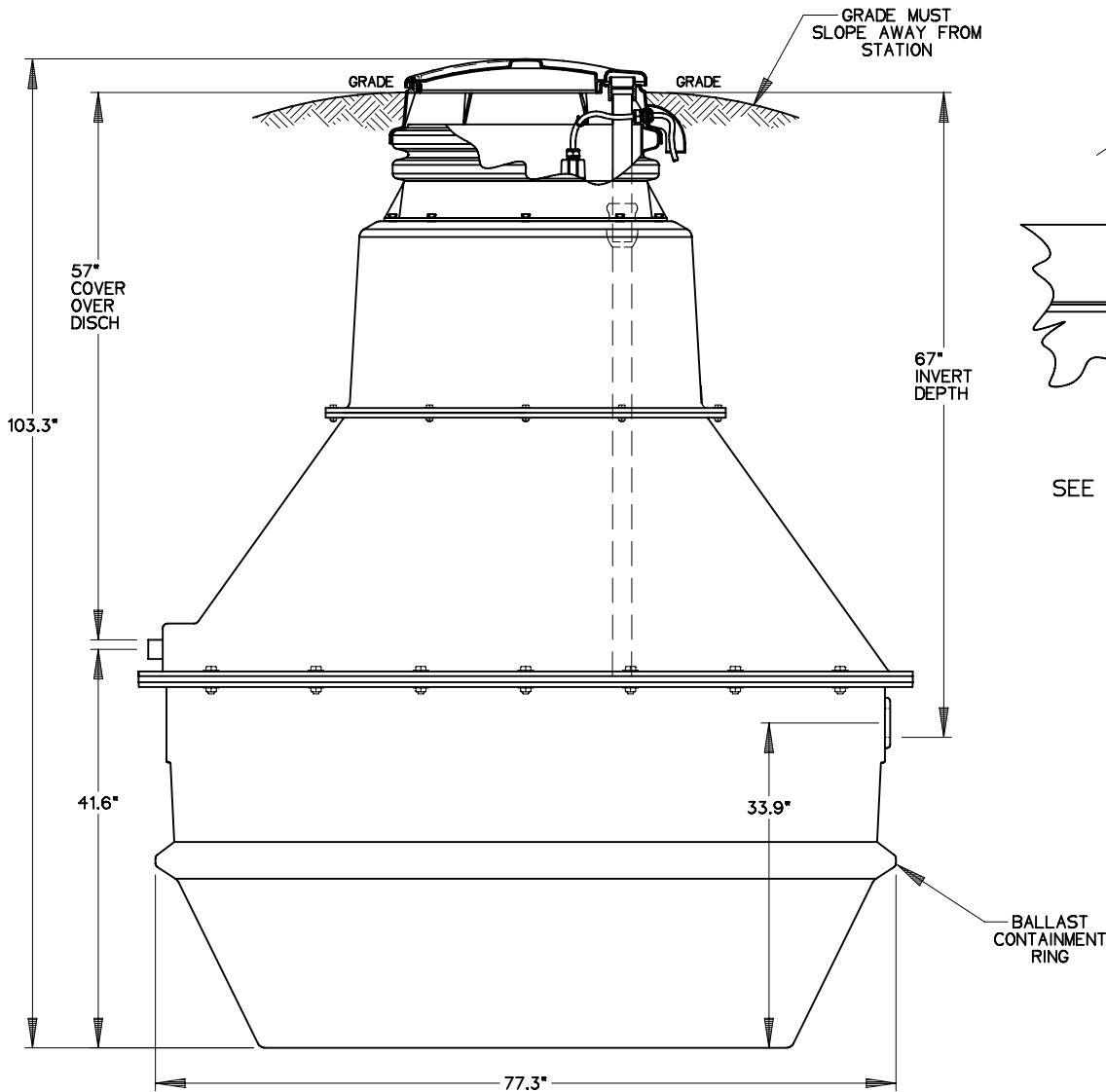
NA0054P03

OPTIONS :  **DH502-104**

(HARD WIRED  
LEVEL CONTROLS)

**DR502-104**

(WIRELESS  
LEVEL CONTROLS)



DETAIL, FIELD JOINT

SEE INSTALLATION INSTRUCTIONS  
FOR FURTHER DETAILS

DISCHARGE: 1-1/4 FEMALE  
PIPE THREAD

INLET: EPDM GROMMET FOR  
4" DWV PIPE (STANDARD)



CONCRETE BALLAST MAY BE REQUIRED  
SEE INSTALLATION INSTRUCTIONS  
FOR DETAILS

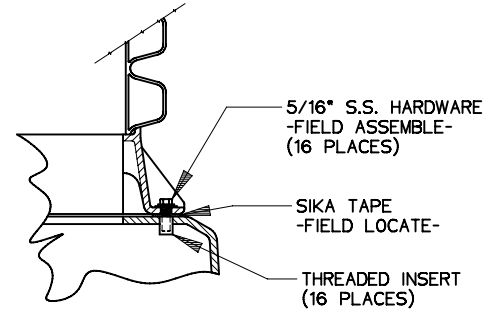
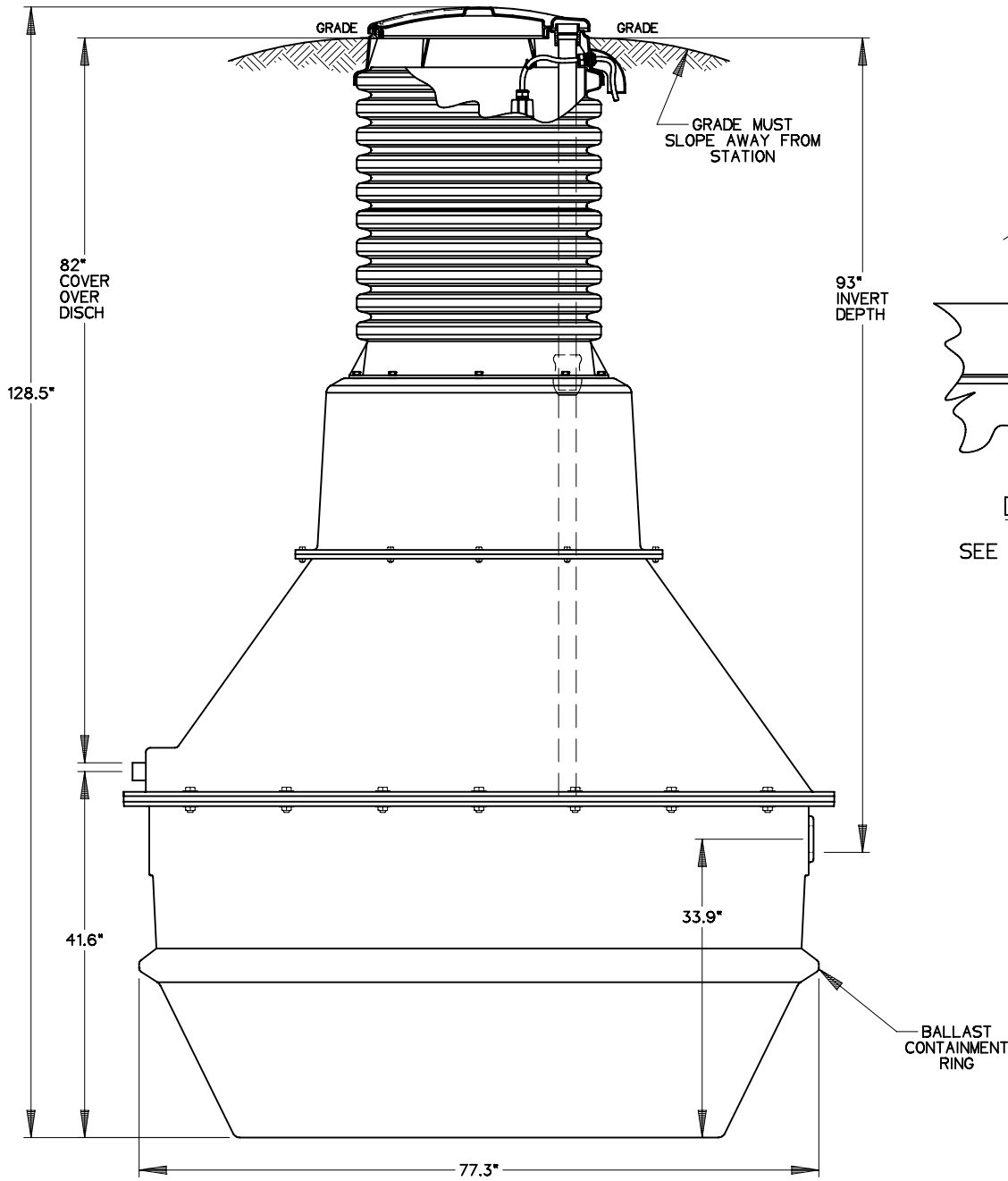
AD	CAH	07/13/07	A	1/20
DR BY	CHK'D	DATE	ISSUE	SCALE



MODEL DH502-104 / DR502-104

NA0054P04

**OPTIONS :**  **DH502-129** (HARD WIRED LEVEL CONTROLS)  
 **DR502-129** (WIRELESS LEVEL CONTROLS)



DETAIL, FIELD JOINT

SEE INSTALLATION INSTRUCTIONS FOR FURTHER DETAILS

DISCHARGE: 1-1/4 FEMALE PIPE THREAD

INLET: EPDM GROMMET FOR 4" DWV PIPE (STANDARD)



CONCRETE BALLAST MAY BE REQUIRED  
SEE INSTALLATION INSTRUCTIONS FOR DETAILS

AD	CAH	7/13/07	A	1/20
DR BY	CHK'D	DATE	ISSUE	SCALE



MODEL DH502-129 / DR502-129

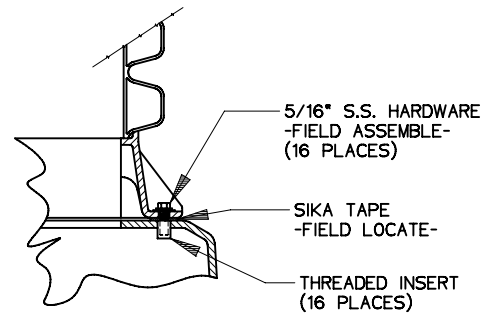
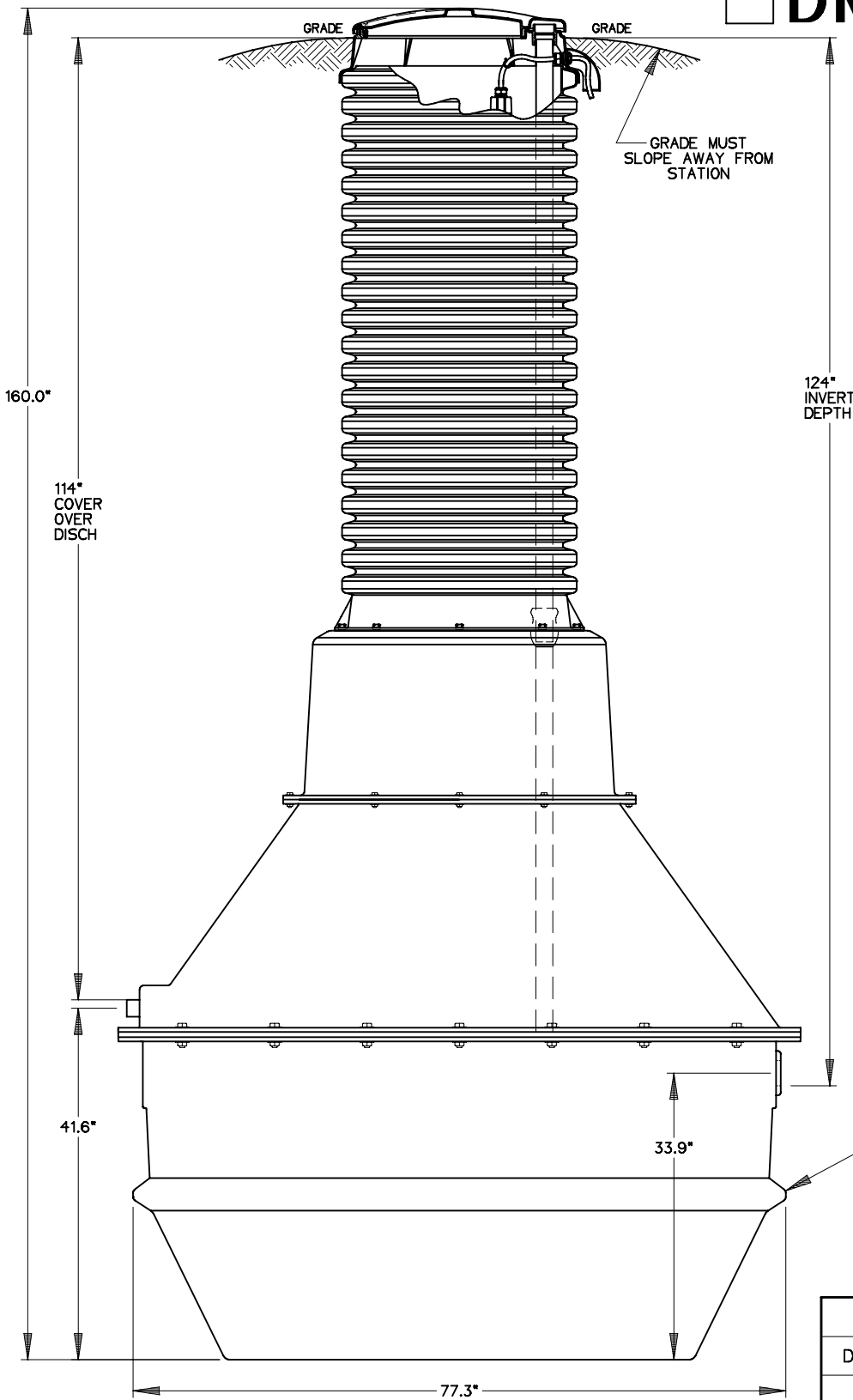
NA0054P05

OPTIONS :  **DH502-160**

(HARD WIRED  
LEVEL CONTROLS)

**DR502-160**

(WIRELESS  
LEVEL CONTROLS)



DETAIL, FIELD JOINT

SEE INSTALLATION INSTRUCTIONS  
FOR FURTHER DETAILS

BALLAST  
CONTAINMENT  
RING



DISCHARGE: 1-1/4 FEMALE  
PIPE THREAD

INLET: EPDM GROMMET FOR  
4" DWV PIPE (STANDARD)

CONCRETE BALLAST MAY BE REQUIRED  
SEE INSTALLATION INSTRUCTIONS  
FOR DETAILS

AD	CAH	07/13/07	A	1/20
DR BY	CHK'D	DATE	ISSUE	SCALE



MODEL DH502-160 / DR502-160

NA0054P06