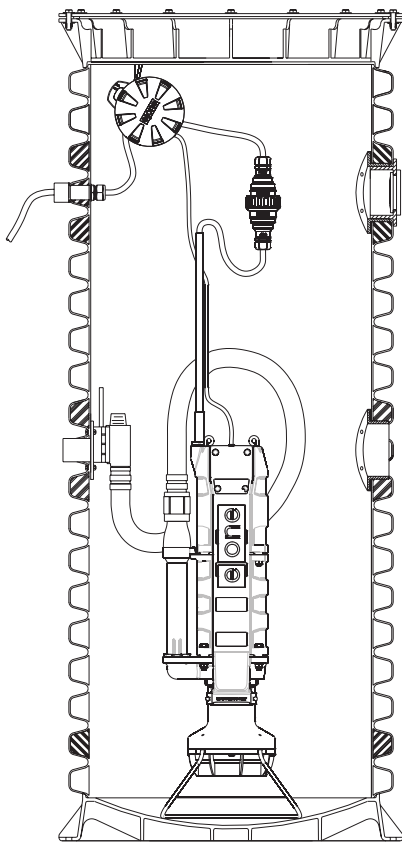


WH101F/WR101F



Features

The WH101F or WR101F grinder pump station is a complete unit that includes: the grinder pump, check valve, HDPE (high density polyethylene) tank and controls. The WH101F or WR101F is packaged into a single complete unit, ready for installation.

The WH101F or WR101F station is designed for areas where high flood-plain conditions occur. The WH101F or WR101F is a watertight, sealed station capable of sustaining a 15-foot flood above the top of the station. This type of flood condition will not affect the continued operation of the pump; the homeowner should rely on uninterrupted service.

The WH101F is the “hardwired,” or “wired,” model where a cable connects the motor controls to the level controls through watertight penetrations.

The WR101F is the “radio frequency identification” (RFID), or “wireless,” model that uses wireless technology to communicate between the level controls and the motor controls.

All solids are ground into fine particles, allowing them to pass easily through the pump, check valve, and small diameter pipe lines. Even objects that are not normally found in sewage, such as plastic, rubber, fiber, wood, etc. are ground into fine particles.

The 1-1/4” inch discharge connection is adaptable to any piping materials, thereby allowing us to meet your local code requirements.

The tank is made of tough corrosion-resistant HDPE.

The internal check valve assembly, located in the grinder pump, is custom designed for non-clog, trouble-free operation.

The grinder pump is automatically activated. It runs infrequently for very short periods. The annual energy consumption is typically that of a 40 watt light bulb.

Units are available for indoor and outdoor installations. Outdoor units are designed to accommodate a wide range of depths.

Operational Information

Motor

1 HP, 1,725 RPM, high torque, capacitor start, thermally protected, 120/240 V / 60 Hz, one phase

Inlet Connections

4” PVC inlet flange for schedule 40 pipe

Discharge Connections

Pump discharge terminates in 1-1/4” socket for PVC solvent weld. Can easily be adapted to 1-1/4” PVC pipe or any other material required by local codes.

Discharge*

15 gpm at 0 psig

11 gpm at 40 psig

7.8 gpm at 80 psig

Overload Capacity

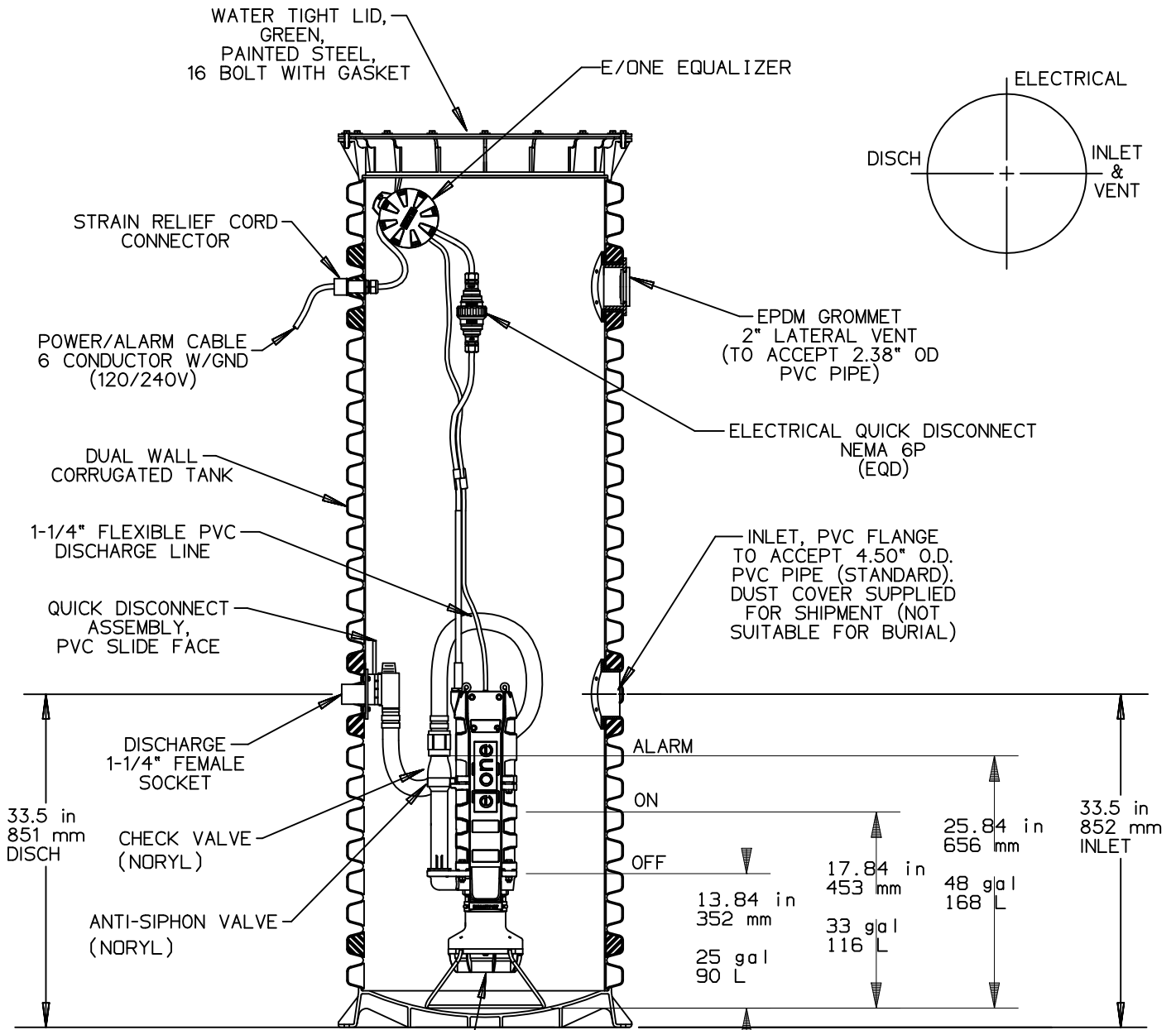
The maximum pressure that the pump can generate is limited by the motor characteristics. The motor generates a pressure well below the rating of the piping and appurtenances. The automatic reset feature does not require manual operation following overload.

Patent Numbers: 5,752,315
5,562,254 5,439,180

* Discharge data includes loss through check valve, which is minimal.

NA0058P01

OPTIONS : **WH101F** (HARD WIRED LEVEL CONTROLS)
 WR101F (WIRELESS LEVEL CONTROLS)



SEMI-POSITIVE DISPLACEMENT TYPE PUMP DIRECTLY DRIVEN BY A 1 HP MOTOR

CONCRETE BALLAST MAY BE REQUIRED SEE INSTALLATION INSTRUCTIONS FOR DETAILS



AD	CH	04/27/09	C	
DR BY	CHK'D	DATE	ISSUE	SCALE



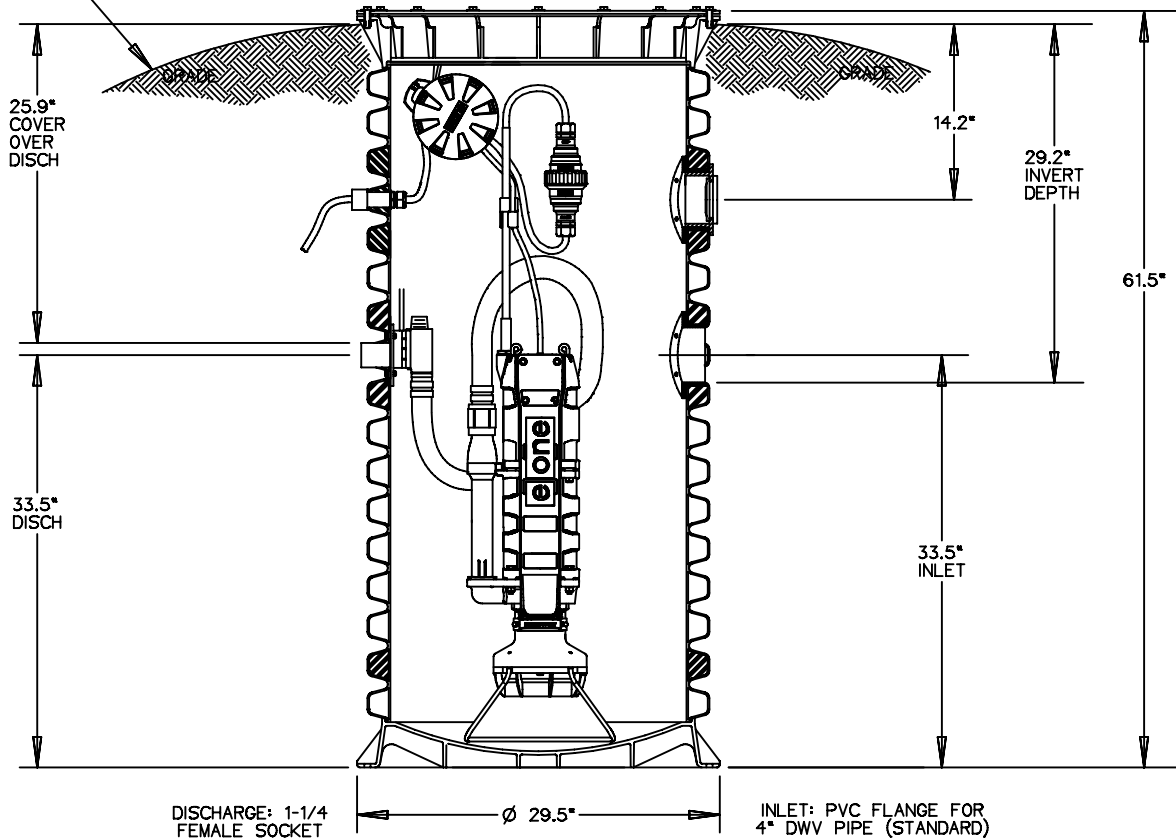
MODEL WH101F / WR101F
 DETAIL SHEET

NA0058P02

OPTIONS : WH101F -60 (HARD WIRED LEVEL CONTROLS)

WR101F -60 (WIRELESS LEVEL CONTROLS)

GRADE MUST SLOPE AWAY FROM STATION



CONCRETE BALLAST MAY BE REQUIRED
SEE INSTALLATION INSTRUCTIONS
FOR DETAILS



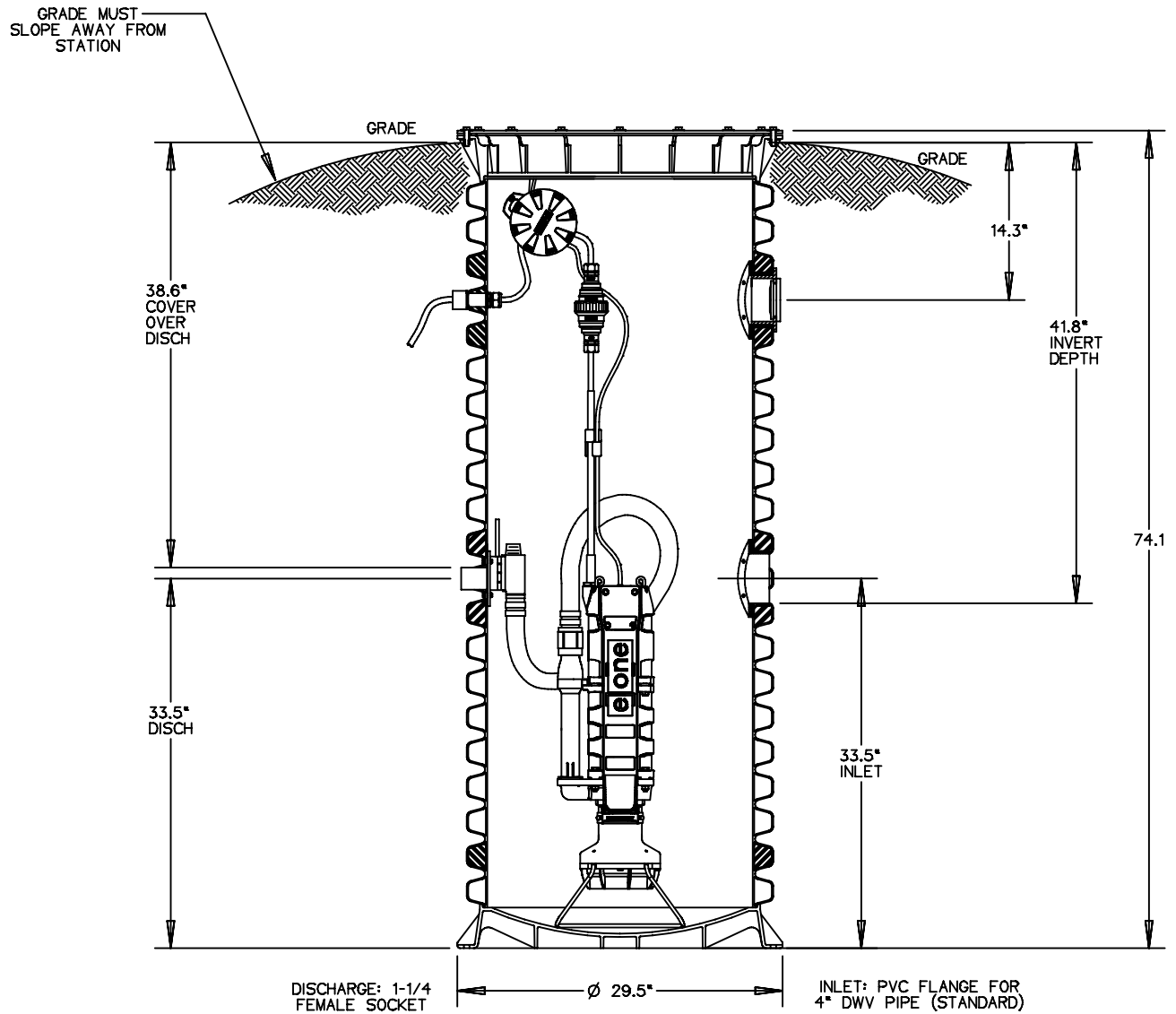
AD	CH	07/16/07	B	
DR BY	CHK'D	DATE	ISSUE	SCALE



MODEL WH101F-60 / WR101F-60

NA0058P03

OPTIONS : **WH101F-74** (HARD WIRED LEVEL CONTROLS)
 WR101F-74 (WIRELESS LEVEL CONTROLS)



CONCRETE BALLAST MAY BE REQUIRED
 SEE INSTALLATION INSTRUCTIONS
 FOR DETAILS



AD	CH	07/16/07	B	
DR BY	CHK'D	DATE	ISSUE	SCALE

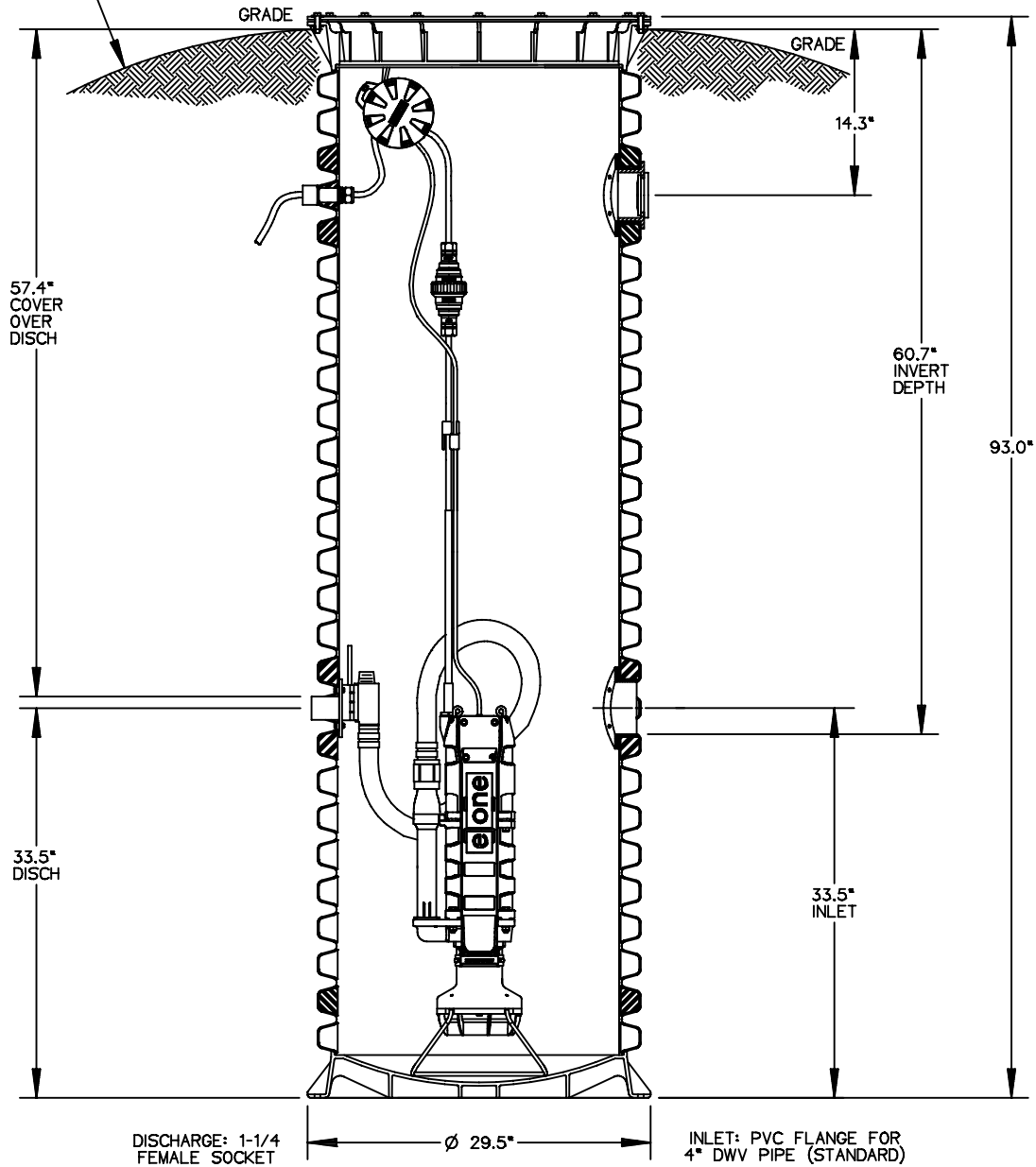


MODEL WH101F-74 / WR101F-74

NA0058P04

OPTIONS : **WH101F -92** (HARD WIRED LEVEL CONTROLS)
 WR101F -92 (WIRELESS LEVEL CONTROLS)

GRADE MUST SLOPE AWAY FROM STATION

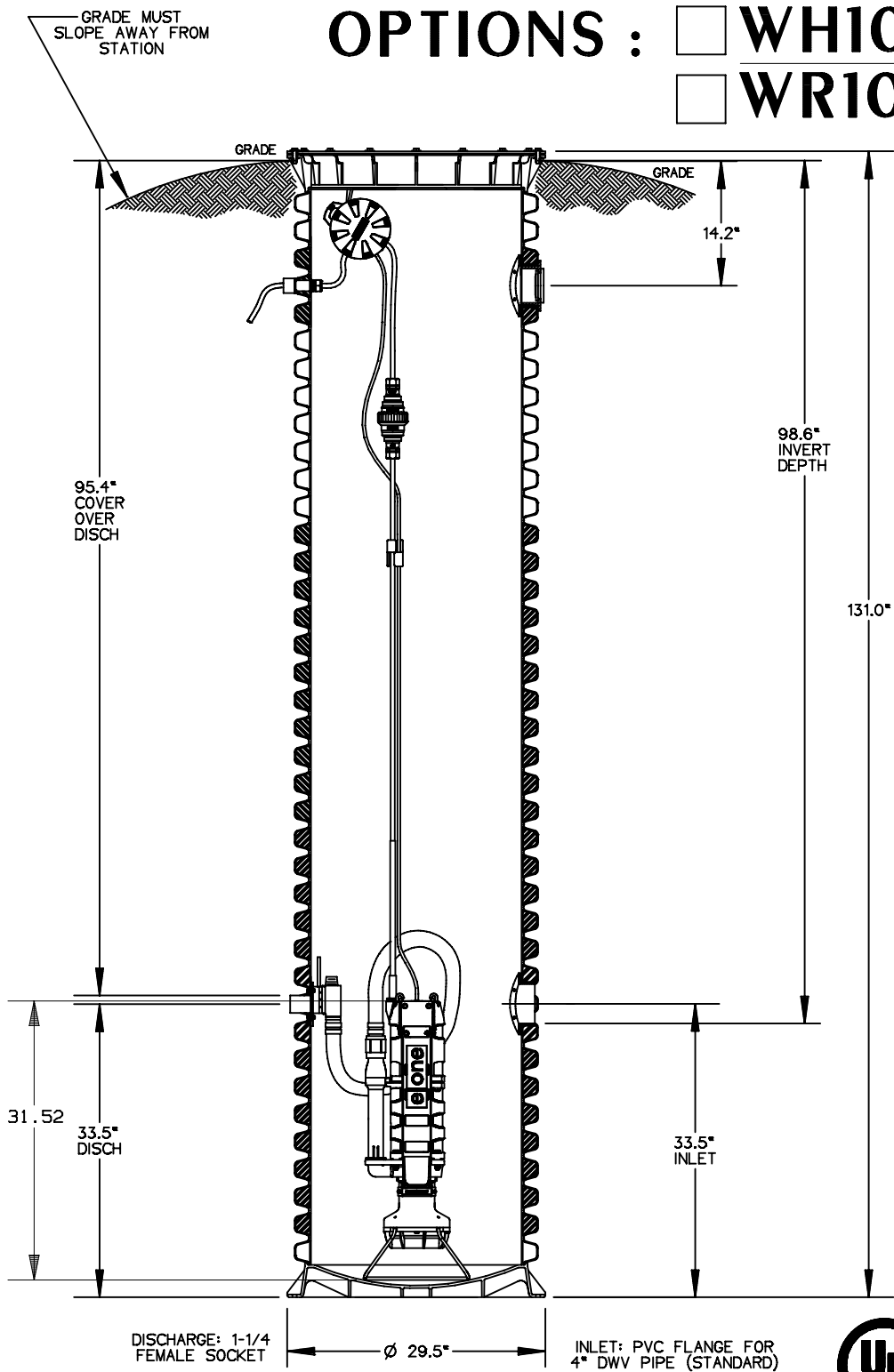


CONCRETE BALLAST MAY BE REQUIRED
 SEE INSTALLATION INSTRUCTIONS
 FOR DETAILS



CH	AD	07/16/07	B	
DR BY	CHK'D	DATE	ISSUE	SCALE
MODEL WH101F-92 / WR101F-92				
NA0058P05				

OPTIONS : **WH101F -129** (HARD WIRED LEVEL CONTROLS)
 WR101F -129 (WIRELESS LEVEL CONTROLS)



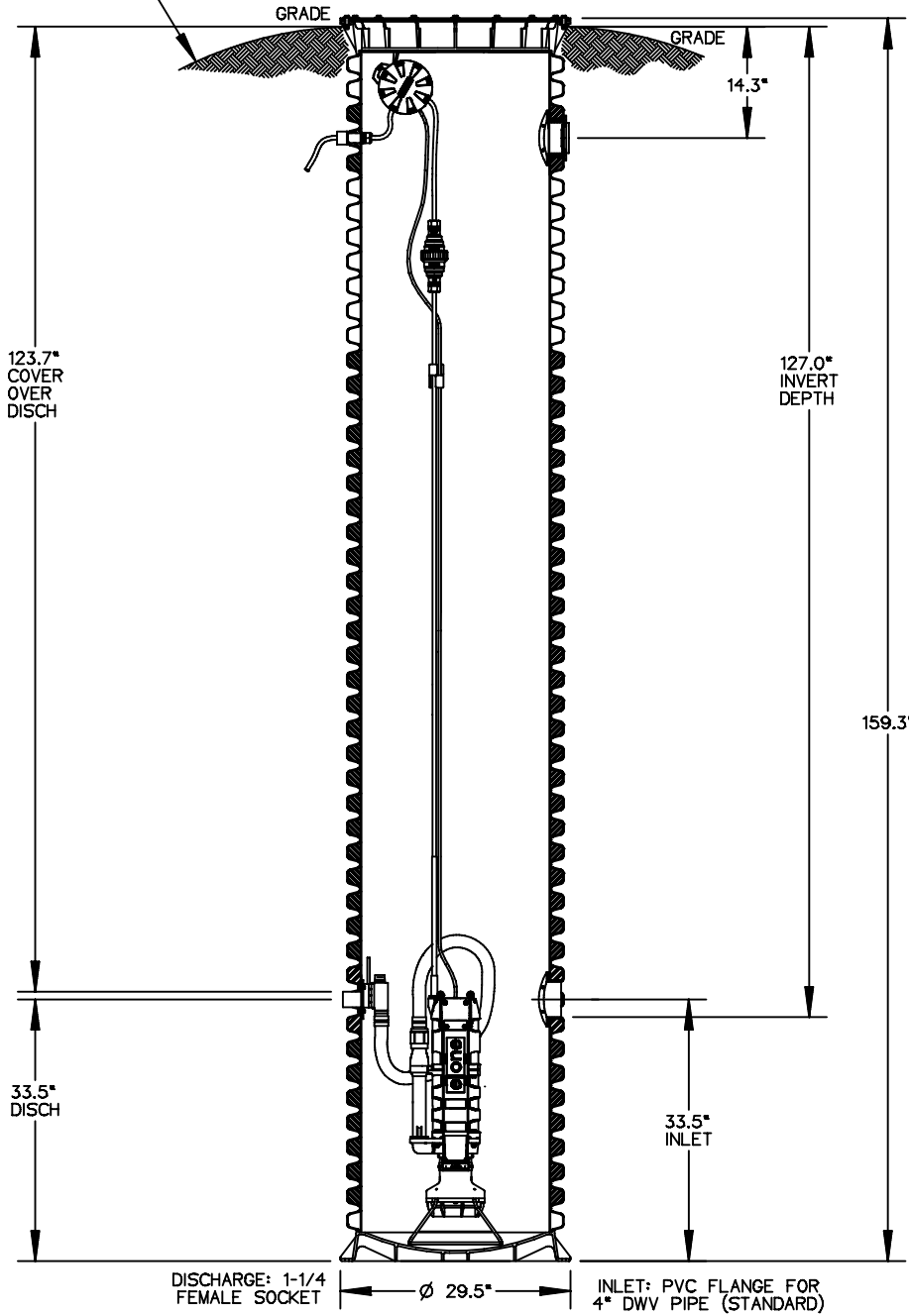
CONCRETE BALLAST MAY BE REQUIRED
 SEE INSTALLATION INSTRUCTIONS
 FOR DETAILS

AD	CH	07/16/07	B	
DR BY	CHK'D	DATE	ISSUE	SCALE
MODEL WH101F-129 / WR101F-129				
NA0058P06				

OPTIONS : **WH101F -160** (HARD WIRED LEVEL CONTROLS)

WR101F -160 (WIRELESS LEVEL CONTROLS)

GRADE MUST SLOPE AWAY FROM STATION



CONCRETE BALLAST MAY BE REQUIRED
SEE INSTALLATION INSTRUCTIONS
FOR DETAILS

AD	CH	07/13/07	B	
DR BY	CHK'D	DATE	ISSUE	SCALE



MODEL WH101F-160 / WR101F-160

NA0058P07