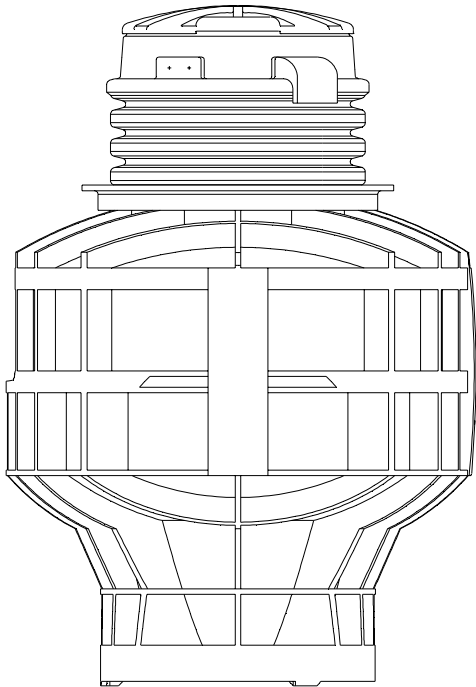


## WH231/WR231



### Features

The WH231 or WR231 is a complete unit that includes: the grinder pump, check valve, polyethylene tank and controls.

The WH231 is the “hardwired,” or “wired,” model where a cable connects the motor controls to the level controls through watertight penetrations.

The WR231 is the “radio frequency identification” (RFID), or “wireless,” model that uses wireless technology to communicate between the level controls and the motor controls.

All solids are ground into fine particles, allowing them to pass easily through the pump, check valve, and small diameter pipe lines. Even objects that are not normally found in sewage, such as plastic, rubber, fiber, wood, etc. are ground into fine particles.

The 1-1/4” inch discharge connection is adaptable to any piping materials, thereby allowing us to meet your local code requirements.

The tank is made of tough corrosion-resistant polyethylene. Designed specifically for low pressure sewer applications, the WH231 or WR231 has an optimum tank capacity of 237 gallons, providing ample user storage. The lower portion of the tank has a smaller diameter tapered down to a dish shaped bottom. These design features reduce the retained volume and promote scouring which will minimize odor and corrosiveness. This model can handle flows of 850 GPD.

The internal check valve assembly, located in the grinder pump, is custom designed for non-clog, trouble-free operation.

The grinder pump is automatically activated. It runs infrequently for very short periods. The annual energy consumption is typically that of a 40 watt light bulb.

### Operational Information

#### *Motor*

1 HP, 1,725 RPM, high torque, capacitor start, thermally protected, 120/240 V / 60 Hz, one phase

#### *Inlet Connections*

4-inch inlet grommet standard for DWV pipe. Other inlet configurations available from the factory.

#### *Discharge Connections*

Pump discharge terminates in 1-1/4” female NPT. Can easily be adapted to 1-1/4” PVC pipe or any other material required by local codes.

#### *Discharge\**

15 gpm at 0 psig

11 gpm at 40 psig

7.8 gpm at 80 psig

### Overload Capacity

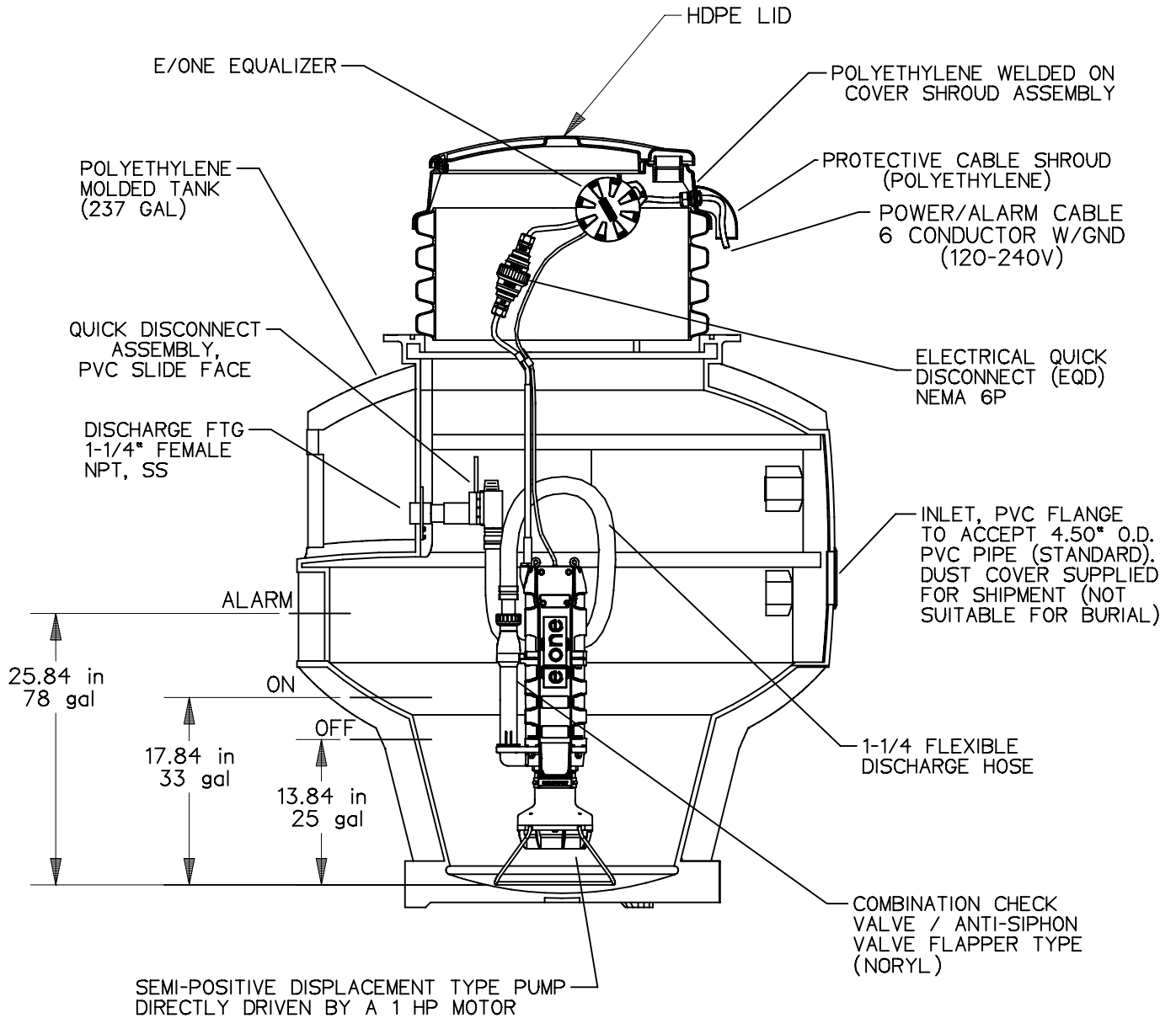
The maximum pressure that the pump can generate is limited by the motor characteristics. The motor generates a pressure well below the rating of the piping and appurtenances. The automatic reset feature does not require manual operation following overload.

Patent Numbers: 5,752,315  
5,562,254 5,439,180


\* Discharge data includes loss through check valve, which is minimal.

NA0059P01

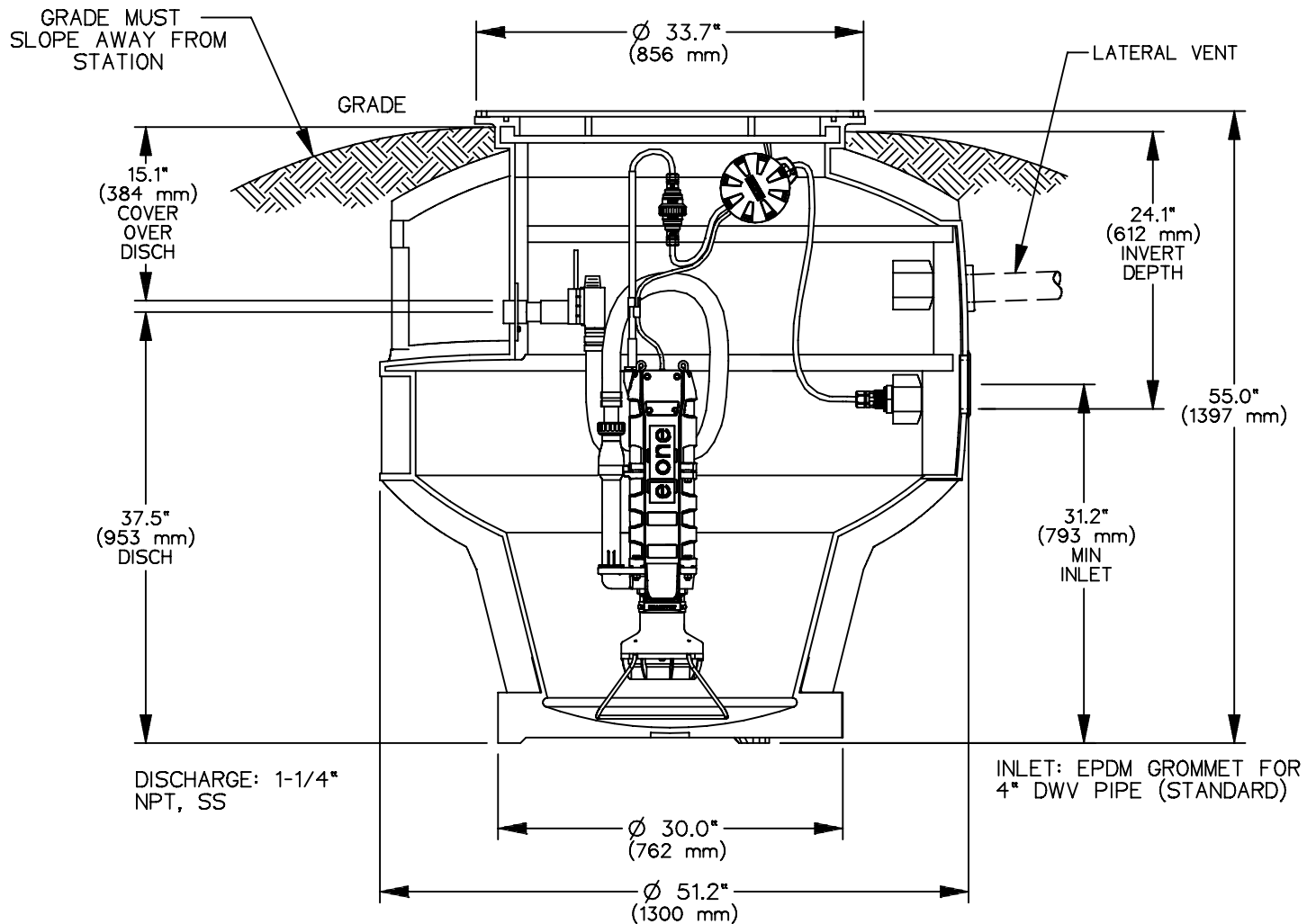
**OPTIONS :**  **WH231** (HARD WIRED LEVEL CONTROLS)  
 **WR231** (WIRELESS LEVEL CONTROLS)



CONCRETE BALLAST MAY BE REQUIRED  
 SEE INSTALLATION INSTRUCTIONS  
 FOR DETAILS

AD	CH	10/20/10	D	
DR BY	CHK'D	DATE	ISSUE	SCALE
				
MODEL WH231 / WR231 DETAIL SHEET				
NA0059P02				

**OPTIONS :**  **WH231-55** (HARD WIRED LEVEL CONTROLS)  
 **WR231-55** (WIRELESS LEVEL CONTROLS)



CONCRETE BALLAST MAY BE REQUIRED  
 SEE INSTALLATION INSTRUCTIONS  
 FOR DETAILS

AD	SGS	12/23/10	C	
DR BY	CHK'D	DATE	ISSUE	SCALE

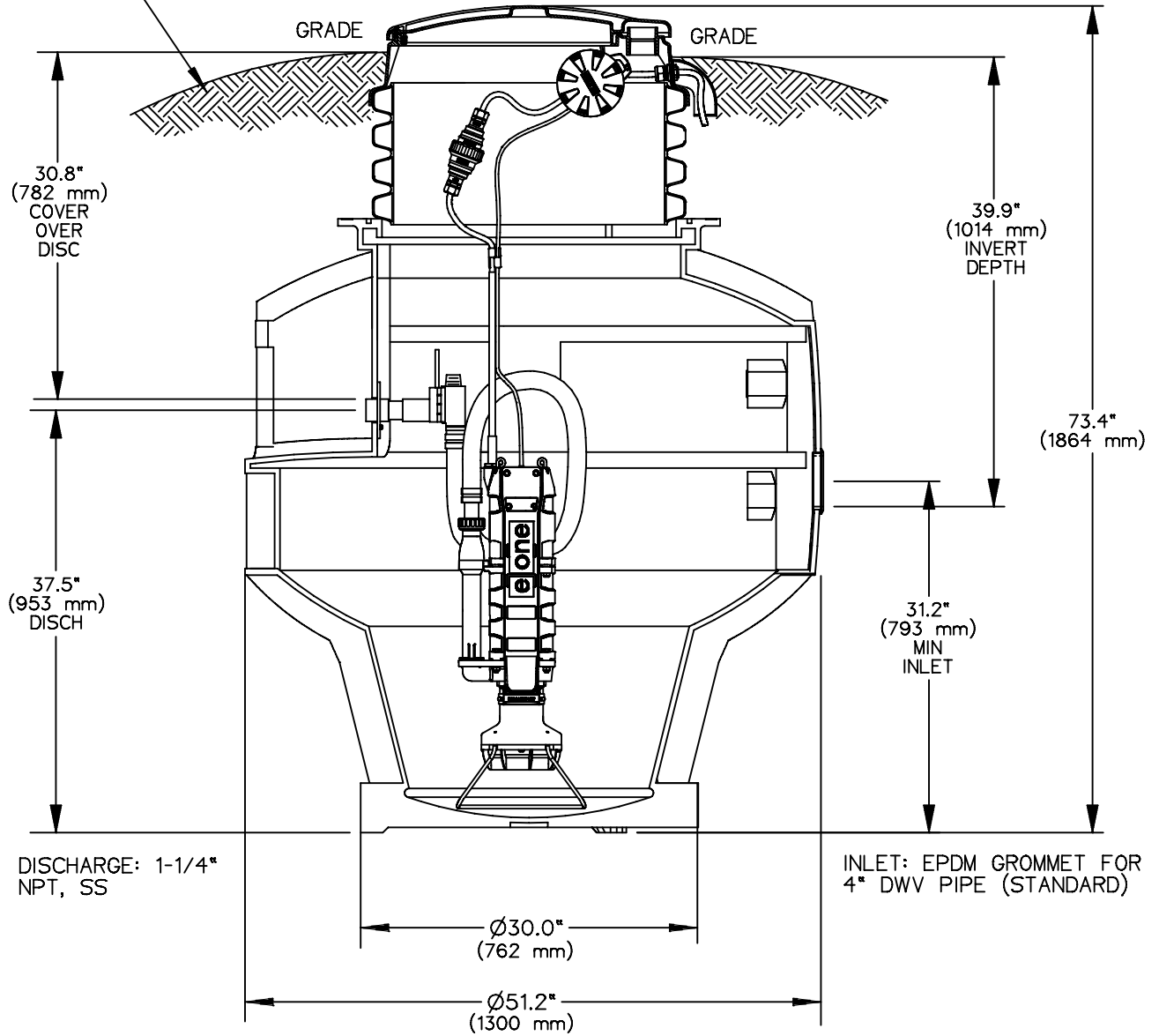


MODEL WH231-55 / WR231-55

NA0059P03

**OPTIONS :**  **WH231-73** (HARD WIRED LEVEL CONTROLS)  
 **WR231-73** (WIRELESS LEVEL CONTROLS)

GRADE MUST SLOPE AWAY FROM STATION



CONCRETE BALLAST MAY BE REQUIRED  
 SEE INSTALLATION INSTRUCTIONS  
 FOR DETAILS

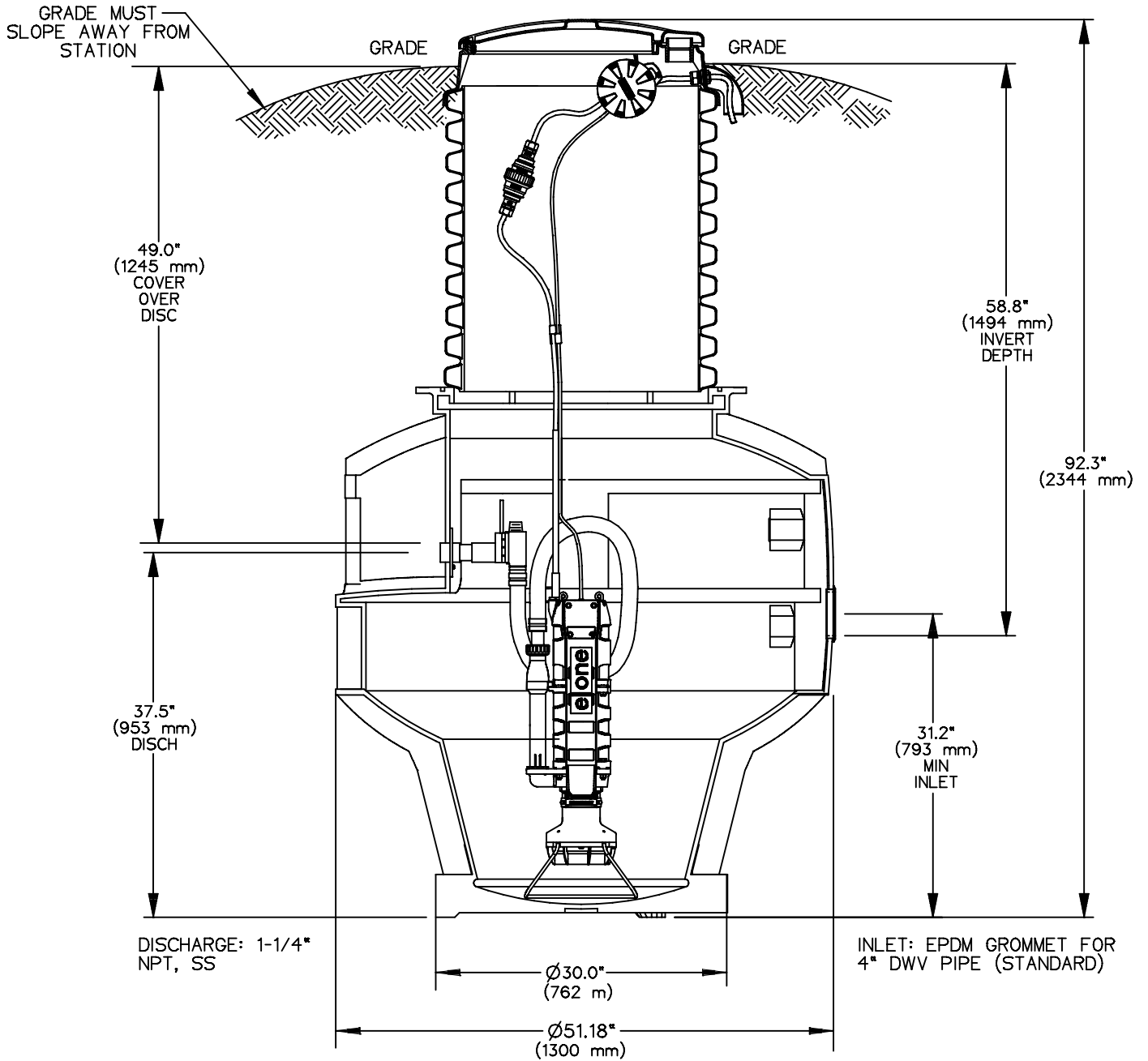
AD	SGS	12/23/10	C	
DR BY	CHK'D	DATE	ISSUE	SCALE



MODEL WH231-73 / WR231-73

NA0059P04

**OPTIONS :**  **WH231-92** (HARD WIRED LEVEL CONTROLS)  
 **WR231-92** (WIRELESS LEVEL CONTROLS)



CONCRETE BALLAST MAY BE REQUIRED  
 SEE INSTALLATION INSTRUCTIONS  
 FOR DETAILS

AD	SGS	12/23/10	C	
DR BY	CHK'D	DATE	ISSUE	SCALE



MODEL WH231-92 / WR231-92

NA0059P05